



[Go to Product page](#)

Datasheet for ABIN7151902
anti-EPS15L1 antibody (AA 585-864)

3 Images

Overview

Quantity:	100 µL
Target:	EPS15L1
Binding Specificity:	AA 585-864
Reactivity:	Human
Host:	Rabbit
Clonality:	Polyclonal
Conjugate:	This EPS15L1 antibody is un-conjugated
Application:	Western Blotting (WB), ELISA, Immunohistochemistry (IHC)

Product Details

Immunogen:	Recombinant Human Epidermal growth factor receptor substrate 15-like 1 protein (585-864AA)
Isotype:	IgG
Cross-Reactivity:	Human
Purification:	Antigen Affinity Purified

Target Details

Target:	EPS15L1
Alternative Name:	EPS15L1 (EPS15L1 Products)
Background:	Background: Seems to be a constitutive component of clathrin-coated pits that is required for receptor-mediated endocytosis. Involved in endocytosis of integrin beta-1 (ITGB1) and

Target Details

transferrin receptor (TFR), internalization of ITGB1 as DAB2-dependent cargo but not TFR seems to require association with DAB2.

Aliases: EP15R_HUMAN antibody, epidermal growth factor receptor pathway substrate 15- like 1 antibody, Epidermal growth factor receptor substrate 15 like 1 antibody, Epidermal growth factor receptor substrate 15-like 1 antibody, epidermal growth factor receptor substrate EPS15R antibody, Eps15 related protein antibody, Eps15-related protein antibody, EPS15L1 antibody, Eps15R antibody

UniProt: [Q9UBC2](#)

Application Details

Application Notes: Recommended dilution: WB:1:1000-1:5000, IHC:1:20-1:200,

Restrictions: For Research Use only

Handling

Format: Liquid

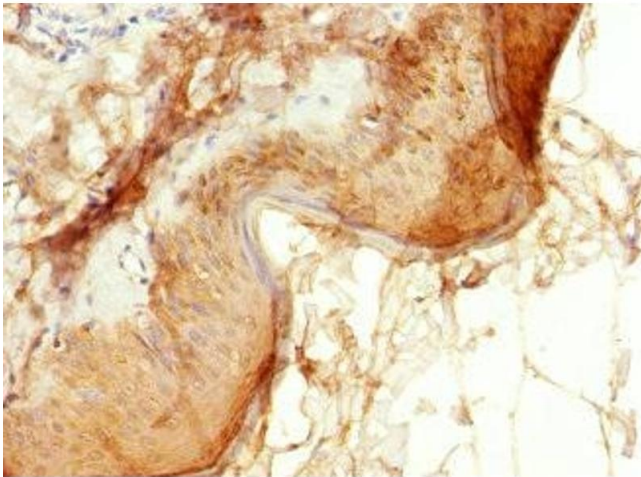
Buffer: PBS with 0.02 % sodium azide, 50 % glycerol, pH 7.3.

Preservative: Sodium azide

Precaution of Use: This product contains Sodium azide: a POISONOUS AND HAZARDOUS SUBSTANCE which should be handled by trained staff only.

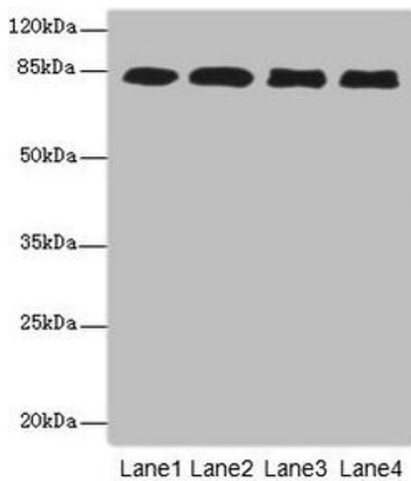
Storage: -20 °C,-80 °C

Storage Comment: Upon receipt, store at -20°C or -80°C. Avoid repeated freeze.



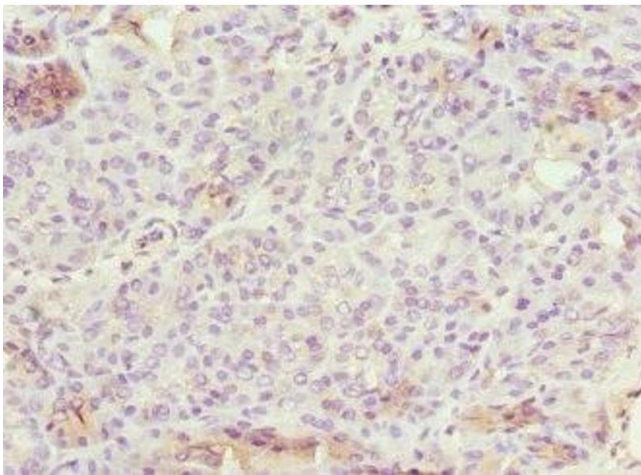
Immunohistochemistry

Image 1. Immunohistochemistry of paraffin-embedded human skin tissue using ABIN7151902 at dilution of 1:100



Western Blotting

Image 2. Western blot All lanes: EPS15L1 antibody at 4.88 μ g/mL Lane 1: 293T whole cell lysate Lane 2: MCF-7 whole cell lysate Lane 3: HepG2 whole cell lysate Lane 4: Hela whole cell lysate Secondary Goat polyclonal to rabbit IgG at 1/10000 dilution Predicted band size: 95, 100, 84, 67 kDa Observed band size: 95 kDa



Immunohistochemistry

Image 3. Immunohistochemistry of paraffin-embedded human pancreatic tissue using ABIN7151902 at dilution of 1:100