



[Go to Product page](#)

Datasheet for ABIN7151925
anti-EMP1 antibody (AA 22-66)

2 Images

Overview

Quantity:	100 µg
Target:	EMP1
Binding Specificity:	AA 22-66
Reactivity:	Human
Host:	Rabbit
Clonality:	Polyclonal
Conjugate:	This EMP1 antibody is un-conjugated
Application:	ELISA, Immunohistochemistry (IHC), Immunofluorescence (IF)

Product Details

Immunogen:	Recombinant Human Epithelial membrane protein 1 protein (22-66AA)
Isotype:	IgG
Cross-Reactivity:	Human
Purification:	Antigen Affinity Purified

Target Details

Target:	EMP1
Alternative Name:	EMP1 (EMP1 Products)
Background:	Background: integral component of membrane, membrane, plasma membrane, bleb assembly, cell death, cell proliferation, epidermis development, multicellular organismal development

Target Details

Aliases: CL-20 antibody, EMP-1 antibody, EMP1 antibody, EMP1_HUMAN antibody, Epithelial membrane protein 1 antibody, Protein B4B antibody, TMP antibody, Tumor-associated membrane protein antibody

UniProt: [P54849](#)

Application Details

Application Notes: Recommended dilution: IHC:1:20-1:200, IF:1:50-1:200,

Restrictions: For Research Use only

Handling

Format: Liquid

Buffer: Preservative: 0.03 % Proclin 300
Constituents: 50 % Glycerol, 0.01M PBS, PH 7.4

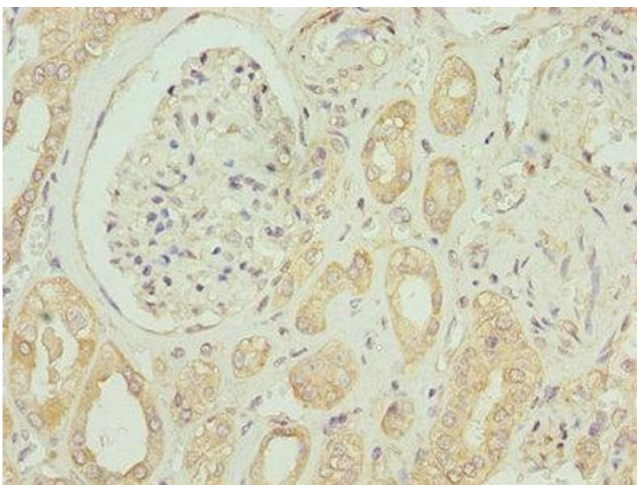
Preservative: ProClin

Precaution of Use: This product contains ProClin: a POISONOUS AND HAZARDOUS SUBSTANCE which should be handled by trained staff only.

Storage: -20 °C,-80 °C

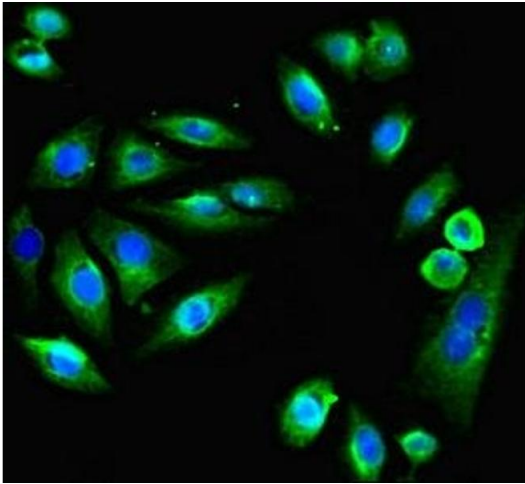
Storage Comment: Upon receipt, store at -20°C or -80°C. Avoid repeated freeze.

Images



Immunohistochemistry

Image 1. Immunohistochemistry of paraffin-embedded human kidney tissue using ABIN7151925 at dilution of 1:100



Immunofluorescence

Image 2. Immunofluorescent analysis of A549 cells using ABIN7151925 at dilution of 1:100 and Alexa Fluor 488-conjugated AffiniPure Goat Anti-Rabbit IgG(H+L)