

Datasheet for ABIN7151929
anti-EMP2 antibody (AA 22-66)



[Go to Product page](#)

2 Images

Overview

Quantity:	100 µg
Target:	EMP2
Binding Specificity:	AA 22-66
Reactivity:	Human
Host:	Rabbit
Clonality:	Polyclonal
Conjugate:	This EMP2 antibody is un-conjugated
Application:	Immunohistochemistry (IHC), ELISA, Immunofluorescence (IF)

Product Details

Immunogen:	Recombinant Human Epithelial membrane protein 2 protein (22-66AA)
Isotype:	IgG
Cross-Reactivity:	Human
Purification:	>95%, Protein G purified

Target Details

Target:	EMP2
Alternative Name:	EMP2 (EMP2 Products)
Background:	Background: Functions as a key regulator of cell membrane composition by regulating proteins surface expression. Also, plays a role in regulation of processes including cell migration, cell

Target Details

proliferation, cell contraction and cell adhesion. Negatively regulates caveolae formation by reducing CAV1 expression and CAV1 amount by increasing lysosomal degradation (PubMed:24814193). Facilitates surface trafficking and formation of lipid rafts bearing GPI-anchor proteins (By similarity). Regulates surface expression of MHC1 and ICAM1 proteins increasing susceptibility to T-cell mediated cytotoxicity (By similarity). Regulates the plasma membrane expression of the integrin heterodimers ITGA6-ITGB1, ITGA5-ITGB3 and ITGA5-ITGB1 resulting in modulation of cell-matrix adhesion (PubMed:16216233). Also regulates many processes through PTK2. Regulates blood vessel endothelial cell migration and angiogenesis by regulating VEGF protein expression through PTK2 activation (PubMed:23439602). Regulates cell migration and cell contraction through PTK2 and SRC activation (PubMed:21637765, PubMed:22728127). Regulates focal adhesion density, F-actin conformation and cell adhesion capacity through interaction with PTK2 (PubMed:19494199). Positively regulates cell proliferation (PubMed:24814193). Plays a role during cell death and cell blebbing (PubMed:12107182). Promotes angiogenesis and vasculogenesis through induction of VEGFA via a HIF1A-dependent pathway (PubMed:23334331). Also plays a role in embryo implantation by regulating surface trafficking of integrin heterodimer ITGA5-ITGB3 (PubMed:16487956). May play a role in glomerular filtration (By similarity).

Aliases: EMP 2 antibody, EMP-2 antibody, EMP2 antibody, EMP2_HUMAN antibody, Epithelial membrane protein 2 antibody, Protein XMP antibody

UniProt: [P54851](#)

Application Details

Application Notes:	Recommended dilution: IHC:1:200-1:500, IF:1:50-1:200,
Restrictions:	For Research Use only

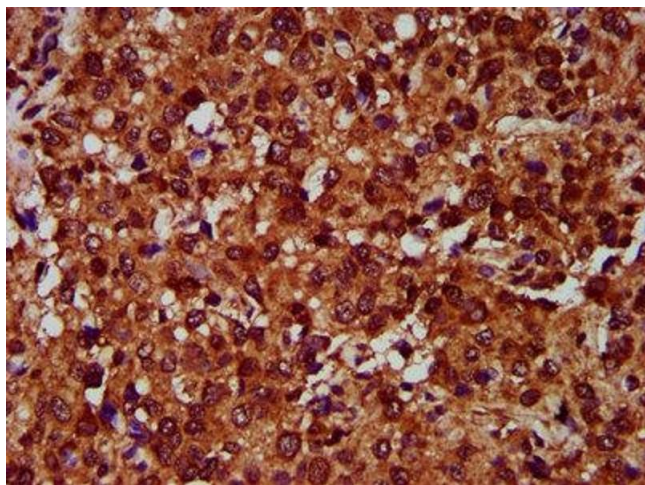
Handling

Format:	Liquid
Buffer:	Preservative: 0.03 % Proclin 300 Constituents: 50 % Glycerol, 0.01M PBS, pH 7.4
Preservative:	ProClin
Precaution of Use:	This product contains ProClin: a POISONOUS AND HAZARDOUS SUBSTANCE which should be handled by trained staff only.
Storage:	-20 °C,-80 °C

Handling

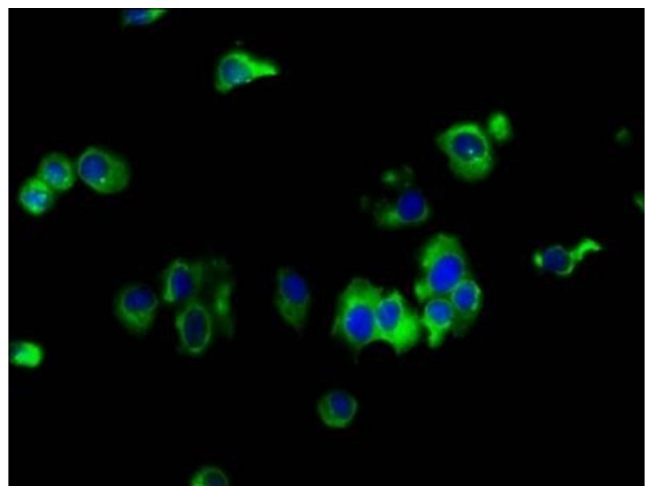
Storage Comment: Upon receipt, store at -20°C or -80°C. Avoid repeated freeze.

Images



Immunohistochemistry

Image 1. IHC image of ABIN7151929 diluted at 1:400 and staining in paraffin-embedded human glioma performed on a Leica Bond™ system. After dewaxing and hydration, antigen retrieval was mediated by high pressure in a citrate buffer (pH 6.0). Section was blocked with 10% normal goat serum 30min at RT. Then primary antibody (1% BSA) was incubated at 4°C overnight. The primary is detected by a biotinylated secondary antibody and visualized using an HRP conjugated SP system.



Immunofluorescence

Image 2. Immunofluorescence staining of MCF-7 cells with ABIN7151929 at 1:133, counter-stained with DAPI. The cells were fixed in 4% formaldehyde, permeabilized using 0.2% Triton X-100 and blocked in 10% normal Goat Serum. The cells were then incubated with the antibody overnight at 4°C. The secondary antibody was Alexa Fluor 488-conjugated AffiniPure Goat Anti-Rabbit IgG(H+L).