



[Go to Product page](#)

Datasheet for ABIN7151941
anti-EPST11 antibody (AA 12-56)

2 Images

Overview

Quantity:	100 µg
Target:	EPST11
Binding Specificity:	AA 12-56
Reactivity:	Human
Host:	Rabbit
Clonality:	Polyclonal
Conjugate:	This EPST11 antibody is un-conjugated
Application:	ELISA, Western Blotting (WB), Immunohistochemistry (IHC)

Product Details

Immunogen:	Recombinant Human Epithelial-stromal interaction protein 1 protein (12-56AA)
Isotype:	IgG
Cross-Reactivity:	Human
Purification:	>95%, Protein G purified

Target Details

Target:	EPST11
Alternative Name:	EPST11 (EPST11 Products)
Background:	BRESI 1 antibody, BRESI1 antibody, Epithelial stromal interaction 1 (breast) antibody, Epithelial stromal interaction protein 1 (breast) antibody, Epithelial stromal interaction protein 1 antibody,

Target Details

Epithelial-stromal interaction protein 1 antibody, EPSTI 1 antibody, Epsti1 antibody, ESIP1_HUMAN antibody, MGC29634 antibody

UniProt: [Q96J88](#)

Application Details

Application Notes: Recommended dilution: WB:1:500-1:5000, IHC:1:200-1:500,

Restrictions: For Research Use only

Handling

Format: Liquid

Buffer: Preservative: 0.03 % Proclin 300
Constituents: 50 % Glycerol, 0.01M PBS, pH 7.4

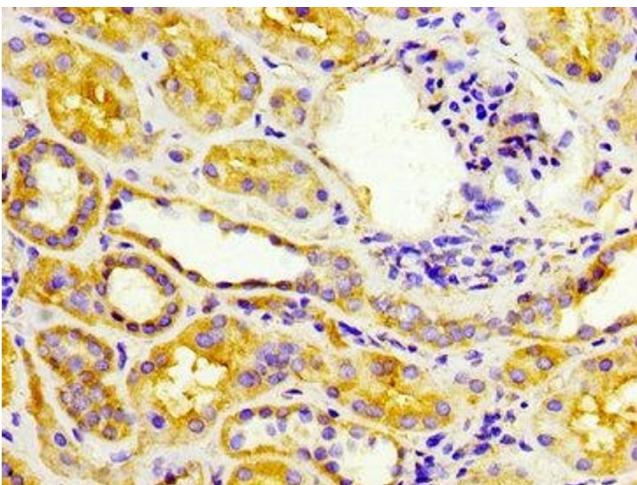
Preservative: ProClin

Precaution of Use: This product contains ProClin: a POISONOUS AND HAZARDOUS SUBSTANCE which should be handled by trained staff only.

Storage: -20 °C,-80 °C

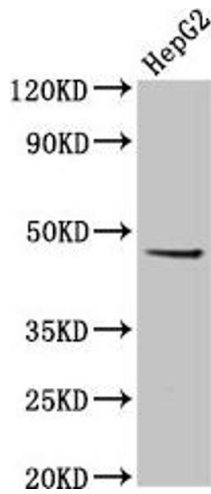
Storage Comment: Upon receipt, store at -20°C or -80°C. Avoid repeated freeze.

Images



Immunohistochemistry

Image 1. IHC image of ABIN7151941 diluted at 1:300 and staining in paraffin-embedded human kidney tissue performed on a Leica Bond™ system. After dewaxing and hydration, antigen retrieval was mediated by high pressure in a citrate buffer (pH 6.0). Section was blocked with 10% normal goat serum 30min at RT. Then primary antibody (1% BSA) was incubated at 4°C overnight. The primary is detected by a biotinylated secondary antibody and visualized using an HRP conjugated SP system.



Western Blotting

Image 2. Western Blot Positive WB detected in: HepG2 whole cell lysate All lanes: EPSTI1 antibody at 5 μ g/mL Secondary Goat polyclonal to rabbit IgG at 1/50000 dilution Predicted band size: 37, 36, 48 kDa Observed band size: 48 kDa