



[Go to Product page](#)

Datasheet for ABIN7151954
anti-SGCE antibody (AA 8-126)

1 Image

Overview

Quantity:	100 µg
Target:	SGCE
Binding Specificity:	AA 8-126
Reactivity:	Human
Host:	Rabbit
Clonality:	Polyclonal
Conjugate:	This SGCE antibody is un-conjugated
Application:	Immunohistochemistry (IHC), ELISA

Product Details

Immunogen:	Recombinant Human Epsilon-sarcoglycan protein (8-126AA)
Isotype:	IgG
Cross-Reactivity:	Human
Purification:	>95%, Protein G purified

Target Details

Target:	SGCE
Alternative Name:	SGCE (SGCE Products)
Background:	Background: Component of the sarcoglycan complex, a subcomplex of the dystrophin-glycoprotein complex which forms a link between the F-actin cytoskeleton and the extracellular

Target Details

matrix.

Aliases: dystonia 11, myoclonic antibody, DYT11 antibody, Epsilon sarcoglycan antibody, Epsilon SG antibody, Epsilon-sarcoglycan antibody, Epsilon-SG antibody, ESG antibody, sarcoglycan, epsilon antibody, sgcE antibody, SGCE_HUMAN antibody

UniProt: [O43556](#)

Application Details

Application Notes: Recommended dilution: IHC:1:200-1:500,

Restrictions: For Research Use only

Handling

Format: Liquid

Buffer: Preservative: 0.03 % Proclin 300
Constituents: 50 % Glycerol, 0.01M PBS, pH 7.4

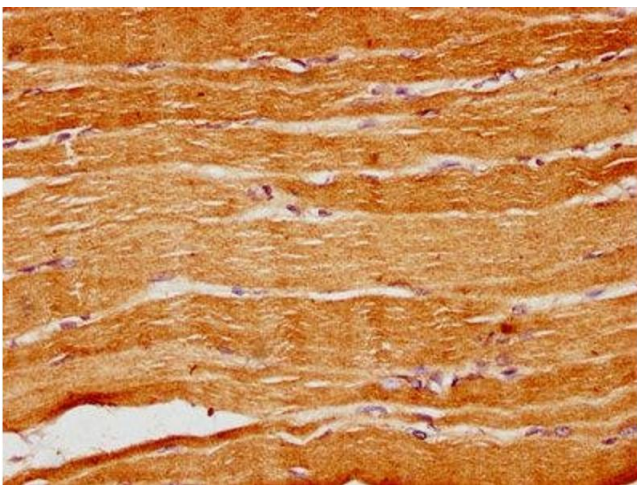
Preservative: ProClin

Precaution of Use: This product contains ProClin: a POISONOUS AND HAZARDOUS SUBSTANCE which should be handled by trained staff only.

Storage: -20 °C,-80 °C

Storage Comment: Upon receipt, store at -20°C or -80°C. Avoid repeated freeze.

Images



Immunohistochemistry

Image 1. IHC image of ABIN7151954 diluted at 1:300 and staining in paraffin-embedded human skeletal muscle tissue performed on a Leica Bond™ system. After dewaxing and hydration, antigen retrieval was mediated by high pressure in a citrate buffer (pH 6.0). Section was blocked with 10 % normal goat serum 30 min at RT. Then primary antibody (1 % BSA) was incubated at 4 °C overnight. The primary is detected by a biotinylated secondary antibody and visualized using an HRP conjugated SP system.