

Datasheet for ABIN7151958
anti-Epsin 2 antibody (AA 15-300)[Go to Product page](#)

1 Image

Overview

| | |
|----------------------|--|
| Quantity: | 100 µL |
| Target: | Epsin 2 (EPN2) |
| Binding Specificity: | AA 15-300 |
| Reactivity: | Human |
| Host: | Rabbit |
| Clonality: | Polyclonal |
| Conjugate: | This Epsin 2 antibody is un-conjugated |
| Application: | ELISA, Immunofluorescence (IF) |

Product Details

| | |
|-------------------|--|
| Immunogen: | Recombinant Human Epsin-2 protein (15-300AA) |
| Isotype: | IgG |
| Cross-Reactivity: | Human |
| Purification: | >95%, Protein G purified |

Target Details

| | |
|-------------------|--|
| Target: | Epsin 2 (EPN2) |
| Alternative Name: | EPN2 (EPN2 Products) |
| Background: | Background: Plays a role in the formation of clathrin-coated invaginations and endocytosis. Aliases: EHB21 antibody, EPN 2 antibody, Epn2 antibody, EPN2_HUMAN antibody, EPS 15 |

Target Details

interacting protein 2 antibody, EPS-15-interacting protein 2 antibody, Eps15 binding protein antibody, Epsin 2 antibody, Epsin-2 antibody, Epsin2 antibody, KIAA1065 antibody, OTTHUMP00000065808 antibody, OTTHUMP00000065809 antibody, OTTHUMP00000065810 antibody, OTTHUMP00000065811 antibody, OTTHUMP00000065889 antibody

UniProt: [O95208](#)

Pathways: [EGFR Downregulation](#)

Application Details

Application Notes: Recommended dilution: IF:1:50-1:200,

Restrictions: For Research Use only

Handling

Format: Liquid

Buffer: Preservative: 0.03 % Proclin 300
Constituents: 50 % Glycerol, 0.01M PBS, pH 7.4

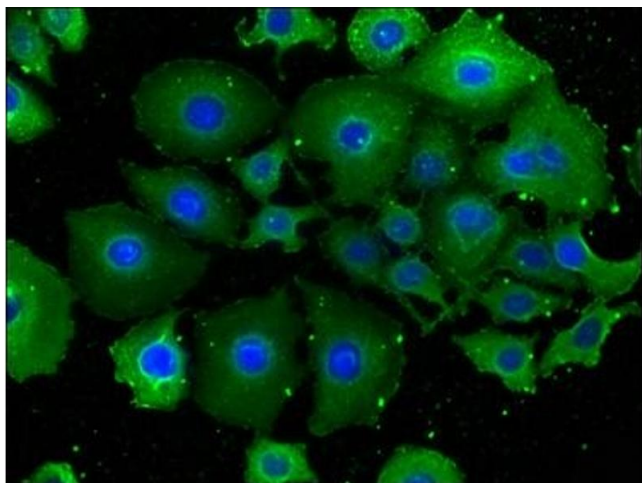
Preservative: ProClin

Precaution of Use: This product contains ProClin: a POISONOUS AND HAZARDOUS SUBSTANCE which should be handled by trained staff only.

Storage: -20 °C,-80 °C

Storage Comment: Upon receipt, store at -20°C or -80°C. Avoid repeated freeze.

Images



Immunofluorescence

Image 1. Immunofluorescence staining of A549 cells with ABIN7151958 at 1:100, counter-stained with DAPI. The cells were fixed in 4 % formaldehyde, permeabilized using 0.2 % Triton X-100 and blocked in 10 % normal Goat Serum. The cells were then incubated with the antibody overnight at 4 °C. The secondary antibody was Alexa Fluor 488-conjugated AffiniPure Goat Anti-Rabbit IgG(H+L).