



[Go to Product page](#)

Datasheet for ABIN7151962
anti-EPN3 antibody (AA 25-208)

3 Images

Overview

Quantity:	100 µg
Target:	EPN3
Binding Specificity:	AA 25-208
Reactivity:	Human
Host:	Rabbit
Clonality:	Polyclonal
Conjugate:	This EPN3 antibody is un-conjugated
Application:	ELISA, Immunohistochemistry (IHC), Immunofluorescence (IF)

Product Details

Immunogen:	Recombinant Human Epsin-3 protein (25-208AA)
Isotype:	IgG
Cross-Reactivity:	Human
Purification:	>95%, Protein G purified

Target Details

Target:	EPN3
Alternative Name:	EPN3 (EPN3 Products)
Background:	Background: clathrin-coated vesicle, extracellular exosome, extrinsic component of plasma membrane, intracellular membrane-bounded organelle, nucleoplasm, nucleus, perinuclear

Target Details

region of cytoplasm

Aliases: EPN 3 antibody, Epn3 antibody, EPN3_HUMAN antibody, EPS 15 interacting protein 3 antibody, EPS-15-interacting protein 3 antibody, Epsin 3 antibody, Epsin-3 antibody, Epsin3 antibody, FLJ20778 antibody, MGC129899 antibody

UniProt: [Q9H201](#)

Application Details

Application Notes: Recommended dilution: IHC:1:20-1:200, IF:1:50-1:200,

Restrictions: For Research Use only

Handling

Format: Liquid

Buffer: Preservative: 0.03 % Proclin 300
Constituents: 50 % Glycerol, 0.01M PBS, pH 7.4

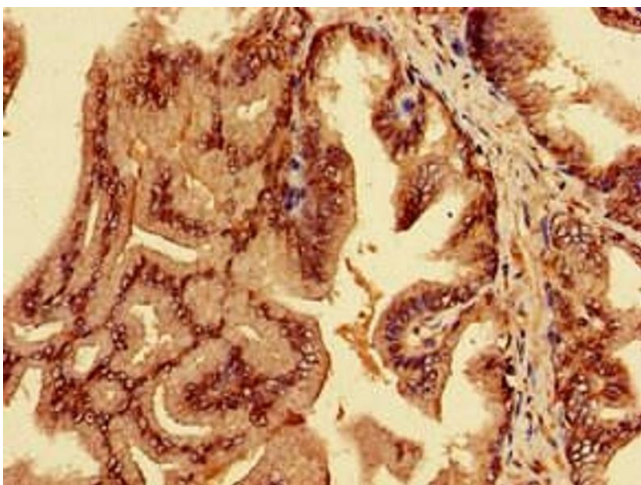
Preservative: ProClin

Precaution of Use: This product contains ProClin: a POISONOUS AND HAZARDOUS SUBSTANCE which should be handled by trained staff only.

Storage: -20 °C,-80 °C

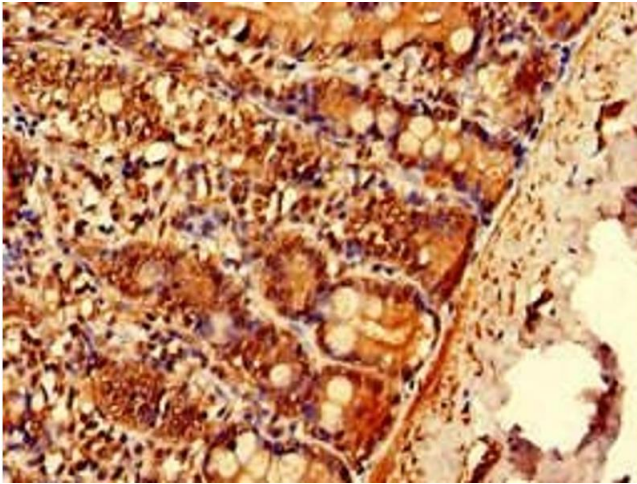
Storage Comment: Upon receipt, store at -20°C or -80°C. Avoid repeated freeze.

Images



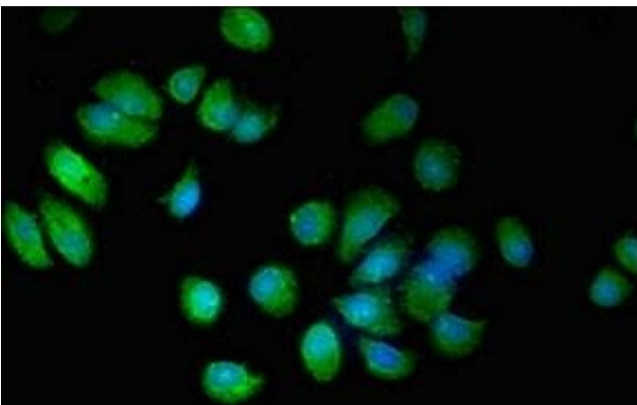
Immunohistochemistry

Image 1. Immunohistochemistry of paraffin-embedded human prostate cancer using ABIN7151962 at dilution of 1:100



Immunohistochemistry

Image 2. Immunohistochemistry of paraffin-embedded human small intestine tissue using ABIN7151962 at dilution of 1:100



Immunofluorescence

Image 3. Immunofluorescent analysis of MCF-7 cells using ABIN7151962 at dilution of 1:100 and Alexa Fluor 488-conjugated AffiniPure Goat Anti-Rabbit IgG(H+L)