

Datasheet for ABIN7151970
anti-EDEM1 antibody (AA 46-128)[Go to Product page](#)

1 Image

Overview

Quantity:	100 µL
Target:	EDEM1
Binding Specificity:	AA 46-128
Reactivity:	Human
Host:	Rabbit
Clonality:	Polyclonal
Conjugate:	This EDEM1 antibody is un-conjugated
Application:	ELISA, Immunohistochemistry (IHC)

Product Details

Immunogen:	Recombinant Human ER degradation-enhancing alpha-mannosidase-like protein 1 protein (46-128AA)
Isotype:	IgG
Cross-Reactivity:	Human
Purification:	>95%, Protein G purified

Target Details

Target:	EDEM1
Alternative Name:	EDEM1 (EDEM1 Products)
Background:	Background: Extracts misfolded glycoproteins, but not glycoproteins undergoing productive

Target Details

folding, from the calnexin cycle. It is directly involved in endoplasmic reticulum-associated degradation (ERAD) and targets misfolded glycoproteins for degradation in an N-glycan-independent manner, probably by forming a complex with SEL1L. It has low mannosidase activity, catalyzing mannose trimming from Man8GlcNAc2 to Man7GlcNAc2.

Aliases: EDEM1 antibody, EDEM antibody, KIAA0212ER degradation-enhancing alpha-mannosidase-like protein 1 antibody

UniProt: [Q92611](#)

Pathways: [ER-Nucleus Signaling](#)

Application Details

Application Notes: Recommended dilution: IHC:1:200-1:500,

Restrictions: For Research Use only

Handling

Format: Liquid

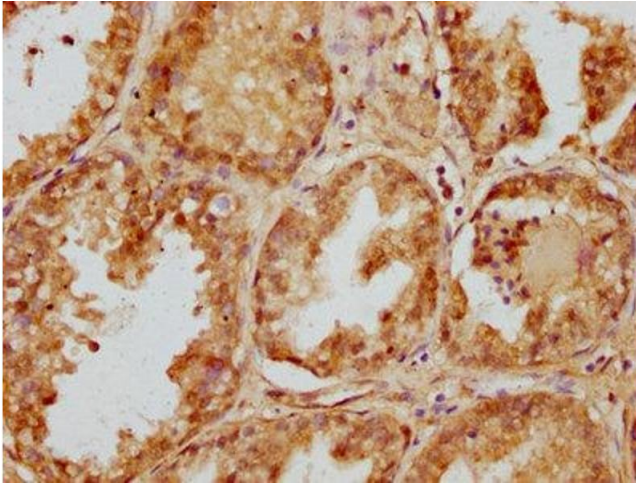
Buffer: Preservative: 0.03 % Proclin 300
Constituents: 50 % Glycerol, 0.01M PBS, pH 7.4

Preservative: ProClin

Precaution of Use: This product contains ProClin: a POISONOUS AND HAZARDOUS SUBSTANCE which should be handled by trained staff only.

Storage: -20 °C,-80 °C

Storage Comment: Upon receipt, store at -20°C or -80°C. Avoid repeated freeze.



Immunohistochemistry

Image 1. IHC image of ABIN7151970 diluted at 1:200 and staining in paraffin-embedded human prostate cancer performed on a Leica Bond™ system. After dewaxing and hydration, antigen retrieval was mediated by high pressure in a citrate buffer (pH 6.0). Section was blocked with 10% normal goat serum 30min at RT. Then primary antibody (1% BSA) was incubated at 4°C overnight. The primary is detected by a biotinylated secondary antibody and visualized using an HRP conjugated SP system.