

Datasheet for ABIN7151986
anti-EMC9 antibody (AA 1-208)[Go to Product page](#)

1 Image

Overview

Quantity:	100 µg
Target:	EMC9
Binding Specificity:	AA 1-208
Reactivity:	Human
Host:	Rabbit
Clonality:	Polyclonal
Conjugate:	This EMC9 antibody is un-conjugated
Application:	ELISA, Immunofluorescence (IF)

Product Details

Immunogen:	Recombinant Human ER membrane protein complex subunit 9 protein (1-208AA)
Isotype:	IgG
Cross-Reactivity:	Human
Purification:	>95%, Protein G purified

Target Details

Target:	EMC9
Alternative Name:	EMC9 (EMC9 Products)
Background:	EMC9 antibody, C14orf122 antibody, FAM158A antibody, CGI-112 antibody, ER membrane protein complex subunit 9 antibody, Protein FAM158A antibody

Target Details

UniProt: [Q9Y3B6](#)

Application Details

Application Notes: Recommended dilution: IF:1:50-1:200,

Restrictions: For Research Use only

Handling

Format: Liquid

Buffer: Preservative: 0.03 % Proclin 300
Constituents: 50 % Glycerol, 0.01M PBS, PH 7.4

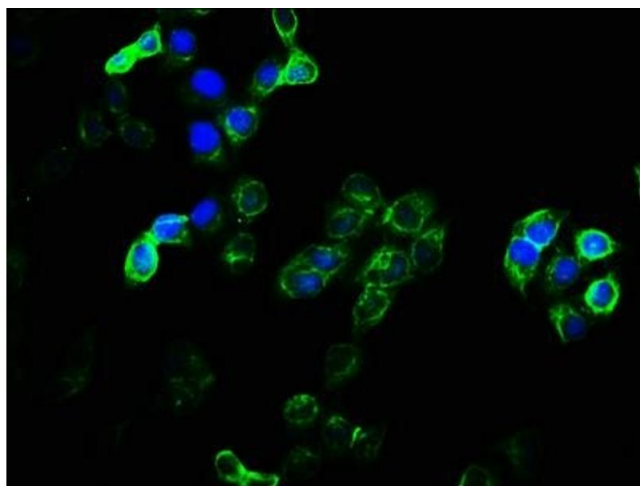
Preservative: ProClin

Precaution of Use: This product contains ProClin: a POISONOUS AND HAZARDOUS SUBSTANCE which should be handled by trained staff only.

Storage: -20 °C,-80 °C

Storage Comment: Upon receipt, store at -20°C or -80°C. Avoid repeated freeze.

Images



Immunofluorescence

Image 1. Immunofluorescence staining of HeLa cells with ABIN7151986 at 1:100, counter-stained with DAPI. The cells were fixed in 4 % formaldehyde, permeabilized using 0.2 % Triton X-100 and blocked in 10 % normal Goat Serum. The cells were then incubated with the antibody overnight at 4 °C. The secondary antibody was Alexa Fluor 488-conjugated AffiniPure Goat Anti-Rabbit IgG(H+L).