

Datasheet for ABIN7152004  
**anti-ERO1LB antibody (AA 101-400)**

## 3 Images

[Go to Product page](#)

## Overview

Quantity:	100 µg
Target:	ERO1LB
Binding Specificity:	AA 101-400
Reactivity:	Human
Host:	Rabbit
Clonality:	Polyclonal
Conjugate:	This ERO1LB antibody is un-conjugated
Application:	Western Blotting (WB), ELISA, Immunohistochemistry (IHC)

## Product Details

Immunogen:	Recombinant Human ERO1-like protein beta protein (101-400AA)
Isotype:	IgG
Cross-Reactivity:	Human, Mouse
Purification:	>95%, Protein G purified

## Target Details

Target:	ERO1LB
Alternative Name:	ERO1B ( <a href="#">ERO1LB Products</a> )
Background:	Background: Oxidoreductase involved in disulfide bond formation in the endoplasmic reticulum. Efficiently reoxidizes P4HB/PDI, the enzyme catalyzing protein disulfide formation, in order to

## Target Details

allow P4HB to sustain additional rounds of disulfide formation. Other protein disulfide isomerase family members can also be reoxidized, but at lower rates compared to P4HB, including PDIA2 (50 % of P4HB reoxidation rate), as well as PDIA3, PDIA4, PDIA6 and NXNDC12 (<10 %). Following P4HB reoxidation, passes its electrons to molecular oxygen via FAD, leading to the production of reactive oxygen species (ROS) in the cell. May be involved in oxidative proinsulin folding in pancreatic cells, hence may play a role in glucose homeostasis.

Aliases: Endoplasmic oxidoreductin-1-like protein B antibody, Endoplasmic reticulum oxidoreductin-1-like protein B antibody, ERO1, S. cerevisiae, homolog of, beta antibody, ERO1-L-beta antibody, ERO1-like beta (S. cerevisiae) antibody, ERO1-like protein beta antibody, ERO1B\_HUMAN antibody, Ero1lb antibody, Oxidoreductin-1-L-beta antibody

UniProt: [Q86YB8](#)

Pathways: [SARS-CoV-2 Protein Interactome](#)

## Application Details

Application Notes: Recommended dilution: WB:1:1000-1:5000, IHC:1:20-1:200,

Restrictions: For Research Use only

## Handling

Format: Liquid

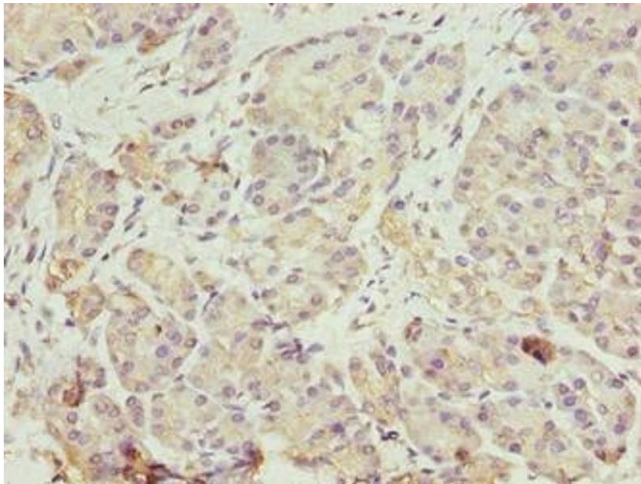
Buffer: Preservative: 0.03 % Proclin 300  
Constituents: 50 % Glycerol, 0.01M PBS, PH 7.4

Preservative: ProClin

Precaution of Use: This product contains ProClin: a POISONOUS AND HAZARDOUS SUBSTANCE which should be handled by trained staff only.

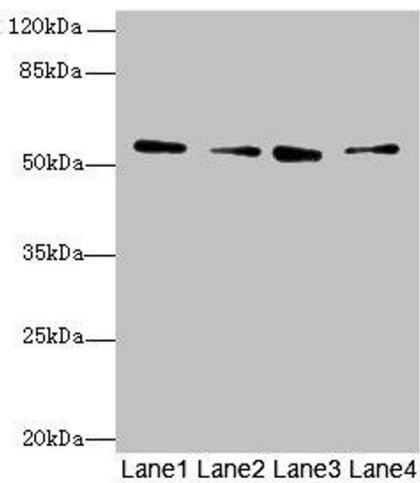
Storage: -20 °C,-80 °C

Storage Comment: Upon receipt, store at -20°C or -80°C. Avoid repeated freeze.



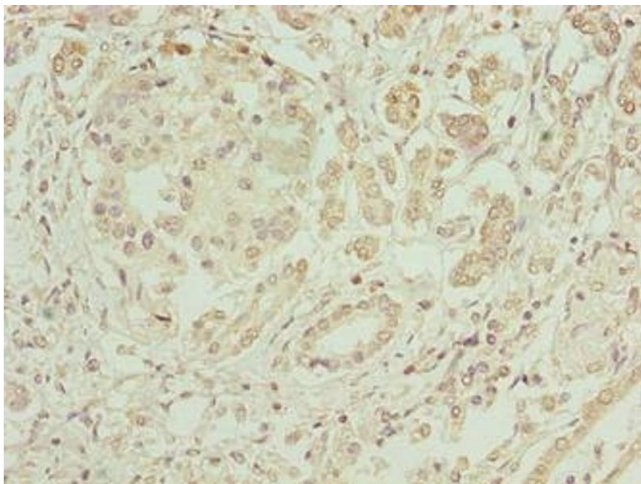
### Immunohistochemistry

**Image 1.** Immunohistochemistry of paraffin-embedded human pancreatic tissue using ABIN7152004 at dilution of 1:100



### Western Blotting

**Image 2.** Western blot All lanes: ERO1B antibody at 3.2  $\mu$ g/mL Lane 1: MCF-7 whole cell lysate Lane 2: U251 whole cell lysate Lane 3: Mouse liver tissue Lane 4: U87 whole cell lysate Secondary Goat polyclonal to rabbit IgG at 1/10000 dilution Predicted band size: 54, 17 kDa Observed band size: 54 kDa



### Immunohistochemistry

**Image 3.** Immunohistochemistry of paraffin-embedded human pancreatic cancer using ABIN7152004 at dilution of 1:100