



[Go to Product page](#)

Datasheet for ABIN7152021
anti-EPOR antibody (AA 320-506)

3 Images

Overview

Quantity:	100 µg
Target:	EPOR
Binding Specificity:	AA 320-506
Reactivity:	Human
Host:	Rabbit
Clonality:	Polyclonal
Conjugate:	This EPOR antibody is un-conjugated
Application:	Western Blotting (WB), ELISA, Immunohistochemistry (IHC), Immunofluorescence (IF)

Product Details

Immunogen:	Recombinant Human Erythropoietin receptor protein (320-506AA)
Isotype:	IgG
Cross-Reactivity:	Human
Purification:	>95%, Protein G purified

Target Details

Target:	EPOR
Alternative Name:	EPOR (EPOR Products)
Background:	Background: Receptor for erythropoietin. Mediates erythropoietin-induced erythroblast proliferation and differentiation. Upon EPO stimulation, EPOR dimerizes triggering the

Target Details

JAK2/STAT5 signaling cascade. In some cell types, can also activate STAT1 and STAT3. May also activate the LYN tyrosine kinase.

Aliases: EPO R antibody, EPO Receptor antibody, EPO-R antibody, epor antibody, EPOR_HUMAN antibody, Erythropoietin receptor antibody, Erythropoietin receptor precursor antibody, MGC138358 antibody

UniProt: [P19235](#)

Pathways: [JAK-STAT Signaling](#)

Application Details

Application Notes: Recommended dilution: WB:1:500-1:5000, IHC:1:300-1:500, IF:1:50-1:200,

Restrictions: For Research Use only

Handling

Format: Liquid

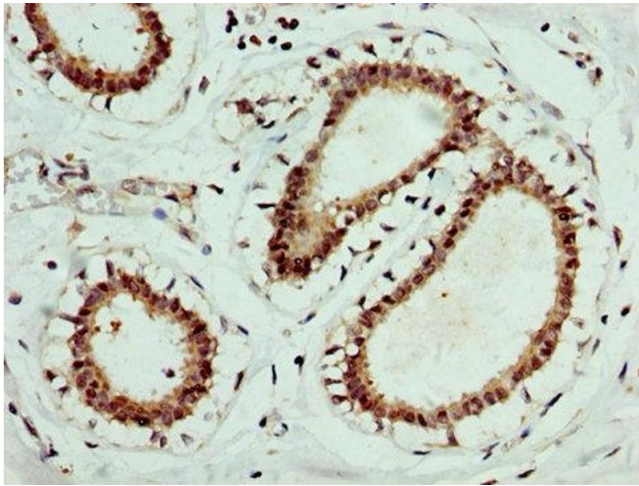
Buffer: Preservative: 0.03 % Proclin 300
Constituents: 50 % Glycerol, 0.01M PBS, pH 7.4

Preservative: ProClin

Precaution of Use: This product contains ProClin: a POISONOUS AND HAZARDOUS SUBSTANCE which should be handled by trained staff only.

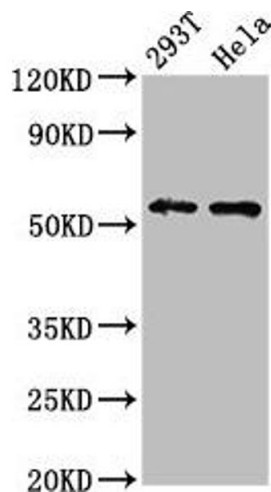
Storage: -20 °C,-80 °C

Storage Comment: Upon receipt, store at -20°C or -80°C. Avoid repeated freeze.



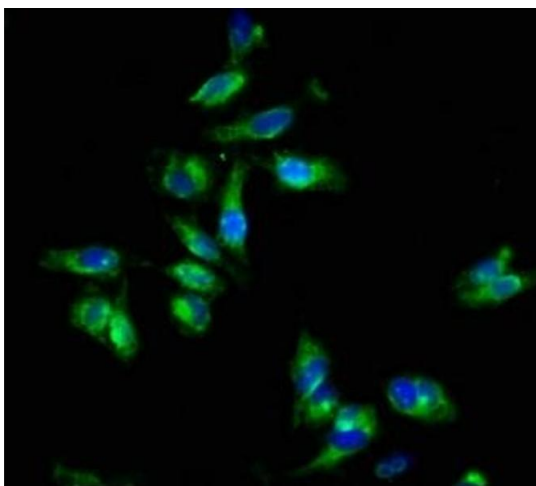
Immunohistochemistry

Image 1. IHC image of ABIN7152021 diluted at 1:400 and staining in paraffin-embedded human breast cancer performed on a Leica Bond™ system. After dewaxing and hydration, antigen retrieval was mediated by high pressure in a citrate buffer (pH 6.0). Section was blocked with 10 % normal goat serum 30 min at RT. Then primary antibody (1 % BSA) was incubated at 4 °C overnight. The primary is detected by a biotinylated secondary antibody and visualized using an HRP conjugated SP system.



Western Blotting

Image 2. Western Blot Positive WB detected in: 293T whole cell lysate, HeLa whole cell lysate All lanes: EPOR antibody at 4.3 µg/mL Secondary Goat polyclonal to rabbit IgG at 1/50000 dilution Predicted band size: 56, 27, 36 kDa Observed band size: 56 kDa



Immunofluorescence

Image 3. Immunofluorescence staining of HeLa cells with ABIN7152021 at 1:133, counter-stained with DAPI. The cells were fixed in 4 % formaldehyde, permeabilized using 0.2 % Triton X-100 and blocked in 10 % normal Goat Serum. The cells were then incubated with the antibody overnight at 4 °C. The secondary antibody was Alexa Fluor 488-conjugated AffiniPure Goat Anti-Rabbit IgG(H+L).