



Datasheet for ABIN7152056

anti-Ethanolamine Kinase 1 antibody (AA 90-258)



[Go to Product page](#)

3 Images

Overview

Quantity:	100 µg
Target:	Ethanolamine Kinase 1 (ETNK1)
Binding Specificity:	AA 90-258
Reactivity:	Human
Host:	Rabbit
Clonality:	Polyclonal
Conjugate:	This Ethanolamine Kinase 1 antibody is un-conjugated
Application:	ELISA, Western Blotting (WB), Immunohistochemistry (IHC), Immunofluorescence (IF)

Product Details

Immunogen:	Recombinant Human Ethanolamine kinase 1 protein (90-258AA)
Isotype:	IgG
Cross-Reactivity:	Human
Purification:	>95%, Protein G purified

Target Details

Target:	Ethanolamine Kinase 1 (ETNK1)
Alternative Name:	ETNK1 (ETNK1 Products)
Background:	Background: Highly specific for ethanolamine phosphorylation. May be a rate-controlling step in phosphatidylethanolamine biosynthesis.

Target Details

Aliases: 1110061E11Rik antibody, 4930555L11Rik antibody, A1195356 antibody, A1841245 antibody, C80956 antibody, D6Ert3e antibody, EKI 1 antibody, EKI antibody, EK11 antibody, EK11_HUMAN antibody, Ethanolamine kinase 1 antibody, ETNK1 antibody, Nbla10396 antibody, Putative protein product of Nbla10396 antibody

UniProt: [Q9HBU6](#)

Application Details

Application Notes: Recommended dilution: WB:1:500-1:2000, IHC:1:20-1:200, IF:1:50-1:200,

Restrictions: For Research Use only

Handling

Format: Liquid

Buffer: Preservative: 0.03 % Proclin 300
Constituents: 50 % Glycerol, 0.01M PBS, PH 7.4

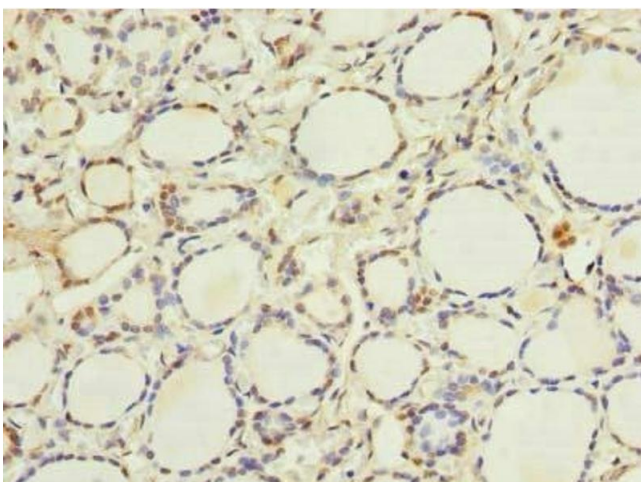
Preservative: ProClin

Precaution of Use: This product contains ProClin: a POISONOUS AND HAZARDOUS SUBSTANCE which should be handled by trained staff only.

Storage: -20 °C,-80 °C

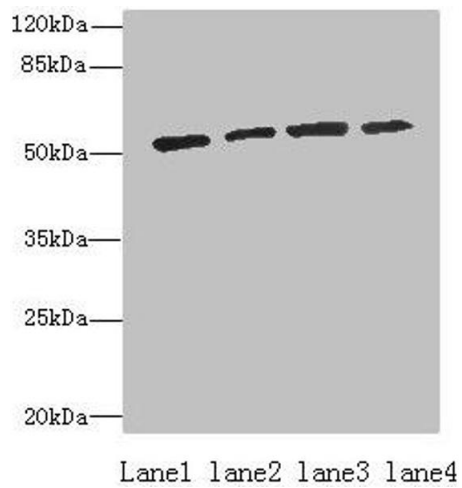
Storage Comment: Upon receipt, store at -20°C or -80°C. Avoid repeated freeze.

Images



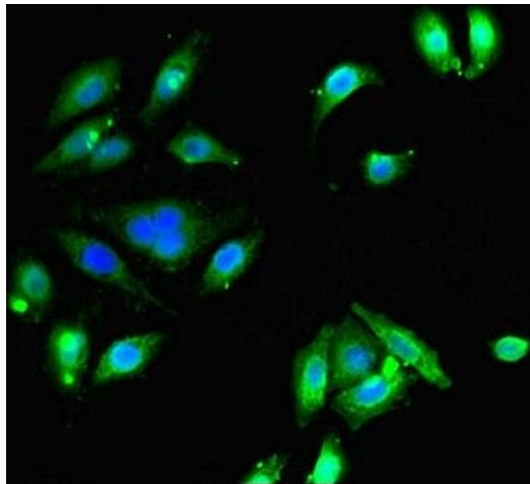
Immunohistochemistry

Image 1. Immunohistochemistry of paraffin-embedded human thyroid tissue using ABIN7152056 at dilution of 1:100



Western Blotting

Image 2. Western blot All lanes: ETNK1 antibody at 0.5 μ g/mL Lane 1: A549 whole cell lysate Lane 2: A431 whole cell lysate Lane 3: HepG2 whole cell lysate Lane 4: MCF-7 whole cell lysate Secondary Goat polyclonal to rabbit IgG at 1/10000 dilution Predicted band size: 51, 28 kDa Observed band size: 51 kDa



Immunofluorescence

Image 3. Immunofluorescent analysis of A549 cells using ABIN7152056 at dilution of 1:100 and Alexa Fluor 488-conjugated AffiniPure Goat Anti-Rabbit IgG(H+L)