

Datasheet for ABIN7152068  
**anti-ELK3 antibody (AA 163-300)**[Go to Product page](#)

## 2 Images

## Overview

Quantity:	100 µg
Target:	ELK3
Binding Specificity:	AA 163-300
Reactivity:	Human
Host:	Rabbit
Clonality:	Polyclonal
Conjugate:	This ELK3 antibody is un-conjugated
Application:	ELISA, Immunohistochemistry (IHC)

## Product Details

Immunogen:	Recombinant Human ETS domain-containing protein Elk-3 protein (163-300AA)
Isotype:	IgG
Cross-Reactivity:	Human
Purification:	>95%, Protein G purified

## Target Details

Target:	ELK3
Alternative Name:	ELK3 ( <a href="#">ELK3 Products</a> )
Background:	Background: May be a negative regulator of transcription, but can activate transcription when coexpressed with Ras, Src or Mos. Forms a ternary complex with the serum response factor

## Target Details

and the ETS and SRF motifs of the Fos serum response element.

Aliases: ELK3 antibody, ELK3, ETS domain protein (SRF accessory protein 2) antibody, ELK3\_HUMAN antibody, ERP antibody, ETS domain protein antibody, ETS domain-containing protein Elk-3 antibody, ETS related protein ERP antibody, ETS related protein NET antibody, ETS-related protein ERP antibody, ETS-related protein NET antibody, NET antibody, SAP 2 antibody, SAP-2 antibody, SAP2 antibody, Serum response factor accessory protein 2 antibody, SRF accessory protein 2 antibody

UniProt: [P41970](#)

## Application Details

Application Notes: Recommended dilution: IHC:1:500-1:1000,

Restrictions: For Research Use only

## Handling

Format: Liquid

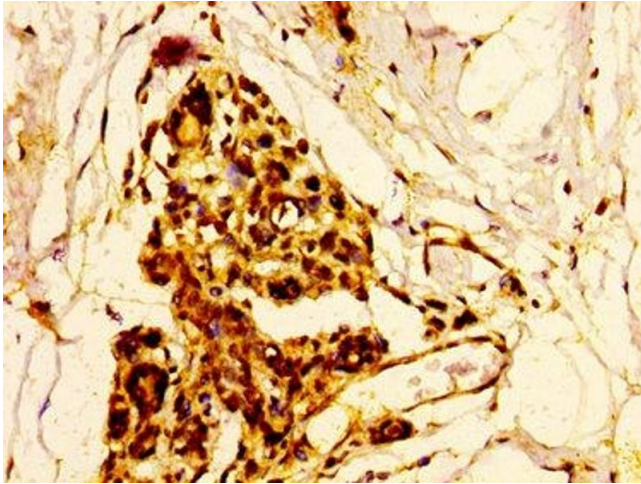
Buffer: Preservative: 0.03 % Proclin 300  
Constituents: 50 % Glycerol, 0.01M PBS, pH 7.4

Preservative: ProClin

Precaution of Use: This product contains ProClin: a POISONOUS AND HAZARDOUS SUBSTANCE which should be handled by trained staff only.

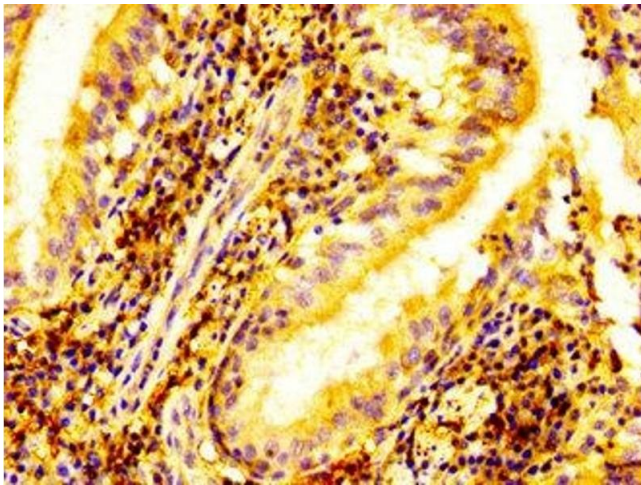
Storage: -20 °C,-80 °C

Storage Comment: Upon receipt, store at -20°C or -80°C. Avoid repeated freeze.



#### Immunohistochemistry

**Image 1.** IHC image of ABIN7152068 diluted at 1:500 and staining in paraffin-embedded human breast cancer performed on a Leica Bond™ system. After dewaxing and hydration, antigen retrieval was mediated by high pressure in a citrate buffer (pH 6.0). Section was blocked with 10% normal goat serum 30min at RT. Then primary antibody (1% BSA) was incubated at 4°C overnight. The primary is detected by a biotinylated secondary antibody and visualized using an HRP conjugated SP system.



#### Immunohistochemistry

**Image 2.** IHC image of ABIN7152068 diluted at 1:500 and staining in paraffin-embedded human lung tissue performed on a Leica Bond™ system. After dewaxing and hydration, antigen retrieval was mediated by high pressure in a citrate buffer (pH 6.0). Section was blocked with 10% normal goat serum 30min at RT. Then primary antibody (1% BSA) was incubated at 4°C overnight. The primary is detected by a biotinylated secondary antibody and visualized using an HRP conjugated SP system.