

Datasheet for ABIN7152072  
**anti-EHF antibody (AA 1-210)**[Go to Product page](#)

## 2 Images

## Overview

Quantity:	100 µL
Target:	EHF
Binding Specificity:	AA 1-210
Reactivity:	Human
Host:	Rabbit
Clonality:	Polyclonal
Conjugate:	This EHF antibody is un-conjugated
Application:	Western Blotting (WB), ELISA, Immunohistochemistry (IHC)

## Product Details

Immunogen:	Recombinant Human ETS homologous factor protein (1-210AA)
Isotype:	IgG
Cross-Reactivity:	Human, Mouse
Purification:	Antigen Affinity Purified

## Target Details

Target:	EHF
Alternative Name:	EHF ( <a href="#">EHF Products</a> )
Background:	Background: Transcriptional activator that may play a role in regulating epithelial cell differentiation and proliferation. May act as a repressor for a specific subset of ETS/AP-1-

## Target Details

responsive genes and as a modulator of the nuclear response to mitogen-activated protein kinase signaling cascades. Binds to DNA sequences containing the consensus nucleotide core sequence GGAA. Involved in regulation of TNFRSF10B/DR5 expression through Ets-binding sequences on the TNFRSF10B/DR5 promoter. May contribute to development and carcinogenesis by acting as a tumor suppressor gene or anti-oncogene.

Aliases: EHF antibody, EHF\_HUMAN antibody, Epithelium-specific Ets transcription factor 3 antibody, ESE-3 antibody, ESE3 antibody, ESE3 transcription factor antibody, ESE3B antibody, ESEJ antibody, Ets domain transcription factor antibody, ETS domain-containing transcription factor antibody, ETS homologous factor antibody, hEHF antibody

UniProt: [Q9NZC4](#)

## Application Details

Application Notes: Recommended dilution: WB:1:1000-1:5000, IHC:1:20-1:200,

Restrictions: For Research Use only

## Handling

Format: Liquid

Buffer: PBS with 0.02 % sodium azide, 50 % glycerol, pH 7.3.

Preservative: Sodium azide

Precaution of Use: This product contains Sodium azide: a POISONOUS AND HAZARDOUS SUBSTANCE which should be handled by trained staff only.

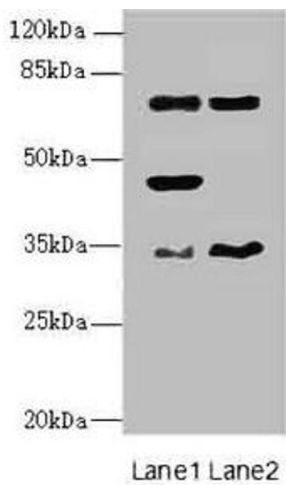
Storage: -20 °C,-80 °C

Storage Comment: Upon receipt, store at -20°C or -80°C. Avoid repeated freeze.



### Immunohistochemistry

**Image 1.** Immunohistochemistry of paraffin-embedded human skeletal muscle tissue using ABIN7152072 at dilution of 1:100



### Western Blotting

**Image 2.** Western blot All lanes: EHF antibody at 4.95  $\mu$ g/mL Lane 1: Mouse brain tissue Lane 2: Mouse lung tissue Secondary Goat polyclonal to rabbit IgG at 1/10000 dilution Predicted band size: 35, 33, 38 kDa Observed band size: 35, 45, 63 kDa