

Datasheet for ABIN7152090  
**anti-ELF2 antibody (AA 1-353)**[Go to Product page](#)

## 1 Image

## Overview

Quantity:	100 µL
Target:	ELF2
Binding Specificity:	AA 1-353
Reactivity:	Human
Host:	Rabbit
Clonality:	Polyclonal
Conjugate:	This ELF2 antibody is un-conjugated
Application:	ELISA, Immunofluorescence (IF)

## Product Details

Immunogen:	Recombinant Human ETS-related transcription factor Elf-2 protein (1-353aa)
Isotype:	IgG
Cross-Reactivity:	Human
Purification:	>95%, Protein G purified

## Target Details

Target:	ELF2
Alternative Name:	ELF2 ( <a href="#">ELF2 Products</a> )
Background:	Background: Isoform 1 transcriptionally activates the LYN and BLK promoters and acts synergistically with RUNX1 to transactivate the BLK promoter.

## Target Details

Aliases: ETS-related transcription factor Elf-2 (E74-like factor 2) (New ETS-related factor), ELF2, NERF

UniProt: [Q15723](#)

## Application Details

Application Notes: Recommended dilution: IF:1:100-1:500,

Restrictions: For Research Use only

## Handling

Format: Liquid

Buffer: Preservative: 0.03 % Proclin 300  
Constituents: 50 % Glycerol, 0.01M PBS, pH 7.4

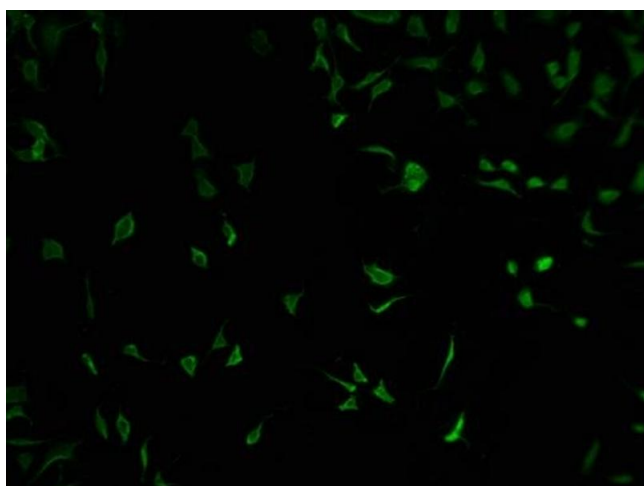
Preservative: ProClin

Precaution of Use: This product contains ProClin: a POISONOUS AND HAZARDOUS SUBSTANCE which should be handled by trained staff only.

Storage: -20 °C,-80 °C

Storage Comment: Upon receipt, store at -20°C or -80°C. Avoid repeated freeze.

## Images



### Immunofluorescence

**Image 1.** Immunofluorescence staining of SH-SY5Y cells with ABIN7152090 at 1:100, counter-stained with DAPI. The cells were fixed in 4 % formaldehyde and blocked in 10 % normal Goat Serum. The cells were then incubated with the antibody overnight at 4 °C. The secondary antibody was Alexa Fluor 488-conjugated AffiniPure Goat Anti-Rabbit IgG(H+L).