

Datasheet for ABIN7152094
anti-ELF3 antibody (AA 147-371)[Go to Product page](#)

2 Images

Overview

Quantity:	100 µL
Target:	ELF3
Binding Specificity:	AA 147-371
Reactivity:	Human
Host:	Rabbit
Clonality:	Polyclonal
Conjugate:	This ELF3 antibody is un-conjugated
Application:	ELISA, Immunohistochemistry (IHC), Immunofluorescence (IF)

Product Details

Immunogen:	Recombinant Human ETS-related transcription factor Elf-3 protein (147-371AA)
Isotype:	IgG
Cross-Reactivity:	Human
Purification:	>95%, Protein G purified

Target Details

Target:	ELF3
Alternative Name:	ELF3 (ELF3 Products)
Background:	Background: Transcriptional activator that binds and transactivates ETS sequences containing the consensus nucleotide core sequence GGA[AT]. Acts synergistically with POU2F3 to

Target Details

transactivate the SPRR2A promoter and with RUNX1 to transactivate the ANGPT1 promoter. Also transactivates collagenase, CCL20, CLND7, FLG, KRT8, NOS2, PTGS2, SPRR2B, TGFBR2 and TGM3 promoters. Represses KRT4 promoter activity. Involved in mediating vascular inflammation. May play an important role in epithelial cell differentiation and tumorigenesis. May be a critical downstream effector of the ERBB2 signaling pathway. May be associated with mammary gland development and involution. Plays an important role in the regulation of transcription with TATA-less promoters in preimplantation embryos, which is essential in preimplantation development (By similarity).

Aliases: E74 like factor 3 antibody, E74 like factor 3 ets domain transcription factor antibody, E74 like factor 3 ets domain transcription factor epithelial specific antibody, E74 like factor 3 ETS domain transcription factor serine box epithelial specific antibody, E74-like factor 3 antibody, Elf3 antibody, ELF3_HUMAN antibody, Epithelial restricted with serine box antibody, Epithelial-restricted with serine box antibody, Epithelium restricted Ets protein ESX antibody, Epithelium specific Ets factor 1 antibody, Epithelium specific Ets transcription factor 1 antibody, Epithelium-restricted Ets protein ESX antibody, Epithelium-specific Ets transcription factor 1 antibody, EPR 1 antibody, EPR1 antibody, ERT antibody, ESE-1 antibody, ESX antibody, Ets domain transcription factor serine box antibody, Ets domain transcription factor serine box epithelial specific antibody, Ets transcription factor antibody, ETS-related transcription factor Elf-3 antibody, jen antibody, MGC139318 antibody

UniProt: [P78545](#)

Application Details

Application Notes: Recommended dilution: IHC:1:500-1:1000, IF:1:50-1:200,

Restrictions: For Research Use only

Handling

Format: Liquid

Buffer: Preservative: 0.03 % Proclin 300
Constituents: 50 % Glycerol, 0.01M PBS, pH 7.4

Preservative: ProClin

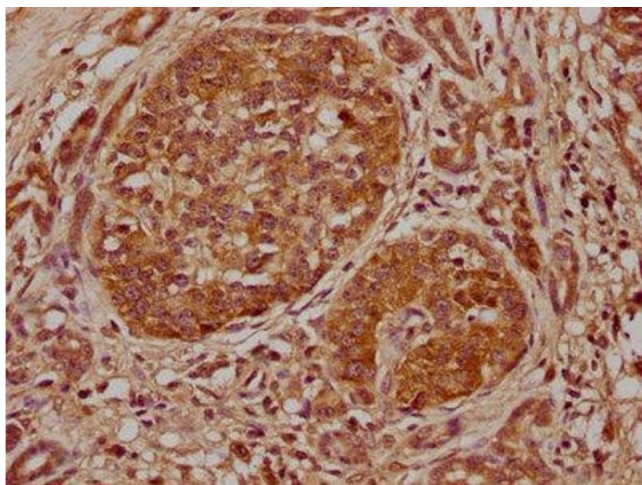
Precaution of Use: This product contains ProClin: a POISONOUS AND HAZARDOUS SUBSTANCE which should be handled by trained staff only.

Storage: -20 °C,-80 °C

Handling

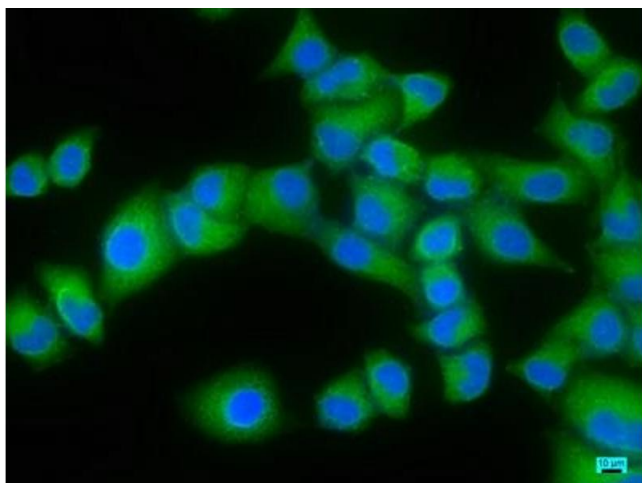
Storage Comment: Upon receipt, store at -20°C or -80°C. Avoid repeated freeze.

Images



Immunohistochemistry

Image 1. IHC image of ABIN7152094 diluted at 1:500 and staining in paraffin-embedded human pancreatic cancer performed on a Leica Bond™ system. After dewaxing and hydration, antigen retrieval was mediated by high pressure in a citrate buffer (pH 6.0). Section was blocked with 10 % normal goat serum 30 min at RT. Then primary antibody (1 % BSA) was incubated at 4 °C overnight. The primary is detected by a biotinylated secondary antibody and visualized using an HRP conjugated SP system.



Immunofluorescence

Image 2. Immunofluorescence staining of HeLa cells with ABIN7152094 at 1:166, counter-stained with DAPI. The cells were fixed in 4 % formaldehyde, permeabilized using 0.2 % Triton X-100 and blocked in 10 % normal Goat Serum. The cells were then incubated with the antibody overnight at 4 °C. The secondary antibody was Alexa Fluor 488-conjugated AffiniPure Goat Anti-Rabbit IgG(H+L).