



[Go to Product page](#)

Datasheet for ABIN7152118
anti-GSPT1 antibody (AA 6-142)

3 Images

Overview

Quantity:	100 µg
Target:	GSPT1
Binding Specificity:	AA 6-142
Reactivity:	Human
Host:	Rabbit
Clonality:	Polyclonal
Conjugate:	This GSPT1 antibody is un-conjugated
Application:	ELISA, Immunohistochemistry (IHC), Immunofluorescence (IF)

Product Details

Immunogen:	Recombinant Human Eukaryotic peptide chain release factor GTP-binding subunit ERF3A protein (6-142AA)
Isotype:	IgG
Cross-Reactivity:	Human
Purification:	>95%, Protein G purified

Target Details

Target:	GSPT1
Alternative Name:	GSPT1 (GSPT1 Products)
Background:	Background: Involved in translation termination in response to the termination codons UAA,

Target Details

UAG and UGA. Stimulates the activity of ERF1. Involved in regulation of mammalian cell growth. Component of the transient SURF complex which recruits UPF1 to stalled ribosomes in the context of nonsense-mediated decay (NMD) of mRNAs containing premature stop codons. Aliases: GSPT1 antibody, ERF3AEukaryotic peptide chain release factor GTP-binding subunit ERF3A antibody, Eukaryotic peptide chain release factor subunit 3a antibody, eRF3a antibody, G1 to S phase transition protein 1 homolog antibody

UniProt: [P15170](#)

Application Details

Application Notes: Recommended dilution: IHC:1:200-1:500, IF:1:50-1:200,

Restrictions: For Research Use only

Handling

Format: Liquid

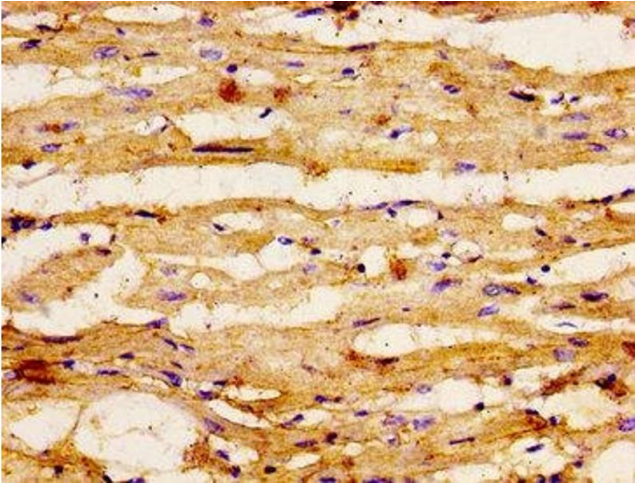
Buffer: Preservative: 0.03 % Proclin 300
Constituents: 50 % Glycerol, 0.01M PBS, pH 7.4

Preservative: ProClin

Precaution of Use: This product contains ProClin: a POISONOUS AND HAZARDOUS SUBSTANCE which should be handled by trained staff only.

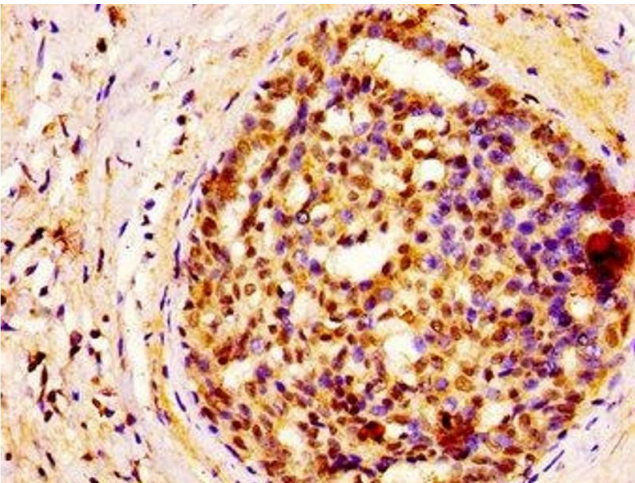
Storage: -20 °C,-80 °C

Storage Comment: Upon receipt, store at -20°C or -80°C. Avoid repeated freeze.



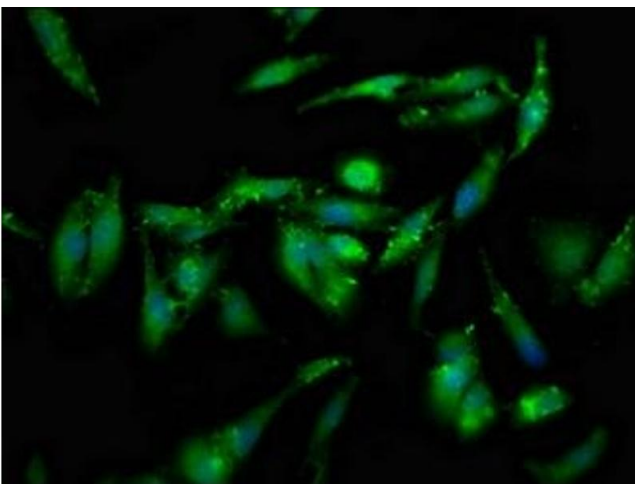
Immunohistochemistry

Image 1. IHC image of ABIN7152118 diluted at 1:400 and staining in paraffin-embedded human heart tissue performed on a Leica Bond™ system. After dewaxing and hydration, antigen retrieval was mediated by high pressure in a citrate buffer (pH 6.0). Section was blocked with 10% normal goat serum 30min at RT. Then primary antibody (1% BSA) was incubated at 4°C overnight. The primary is detected by a biotinylated secondary antibody and visualized using an HRP conjugated ABC system.



Immunohistochemistry

Image 2. IHC image of ABIN7152118 diluted at 1:400 and staining in paraffin-embedded human breast cancer performed on a Leica Bond™ system. After dewaxing and hydration, antigen retrieval was mediated by high pressure in a citrate buffer (pH 6.0). Section was blocked with 10% normal goat serum 30min at RT. Then primary antibody (1% BSA) was incubated at 4°C overnight. The primary is detected by a biotinylated secondary antibody and visualized using an HRP conjugated SP system.



Immunofluorescence

Image 3. Immunofluorescence staining of HeLa cells with ABIN7152118 at 1:133, counter-stained with DAPI. The cells were fixed in 4% formaldehyde, permeabilized using 0.2% Triton X-100 and blocked in 10% normal Goat Serum. The cells were then incubated with the antibody overnight at 4°C. The secondary antibody was Alexa Fluor 488-conjugated AffiniPure Goat Anti-Rabbit IgG(H+L).