

Datasheet for ABIN7152234
anti-SLC1A2 antibody (AA 460-574)



[Go to Product page](#)

3 Images

Overview

Quantity:	100 µg
Target:	SLC1A2
Binding Specificity:	AA 460-574
Reactivity:	Human
Host:	Rabbit
Clonality:	Polyclonal
Conjugate:	This SLC1A2 antibody is un-conjugated
Application:	Western Blotting (WB), Immunohistochemistry (IHC), ELISA, Immunofluorescence (IF)

Product Details

Immunogen:	Recombinant Human Excitatory amino acid transporter 2 protein (460-574AA)
Isotype:	IgG
Cross-Reactivity:	Human, Mouse, Rat
Purification:	>95%, Protein G purified

Target Details

Target:	SLC1A2
Alternative Name:	SLC1A2 (SLC1A2 Products)
Background:	Background: Transports L-glutamate and also L- and D-aspartate. Essential for terminating the postsynaptic action of glutamate by rapidly removing released glutamate from the synaptic

Target Details

cleft. Acts as a symport by cotransporting sodium.

Aliases: EAA2_HUMAN antibody, EAAT2 antibody, Excitatory amino acid transporter 2 antibody, Excitotoxic amino acid transporter 2 antibody, Glial high affinity glutamate transporter antibody, GLT 1 antibody, GLT1 antibody, Glutamate aspartate transporter II antibody, Glutamate transporter 1 antibody, Glutamate/aspartate transporter II antibody, Slc1a2 antibody, Sodium dependent glutamate aspartate transporter 2 antibody, Sodium-dependent glutamate/aspartate transporter 2 antibody, solute carrier family 1 (glial high affinity glutamate transporter), member 2 antibody, Solute carrier family 1 glial high affinity glutamate transporter member 2 antibody, Solute carrier family 1 member 2 antibody

UniProt: [P43004](#)

Pathways: [Dicarboxylic Acid Transport](#)

Application Details

Application Notes: Recommended dilution: WB:1:500-1:5000, IHC:1:20-1:200, IF:1:50-1:200,

Restrictions: For Research Use only

Handling

Format: Liquid

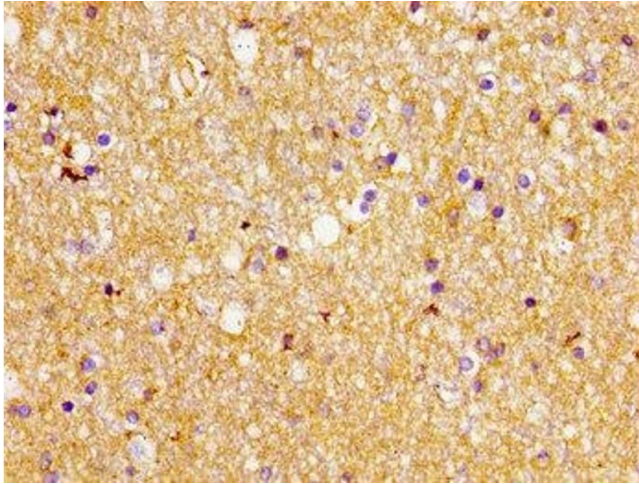
Buffer: Preservative: 0.03 % Proclin 300
Constituents: 50 % Glycerol, 0.01M PBS, pH 7.4

Preservative: ProClin

Precaution of Use: This product contains ProClin: a POISONOUS AND HAZARDOUS SUBSTANCE which should be handled by trained staff only.

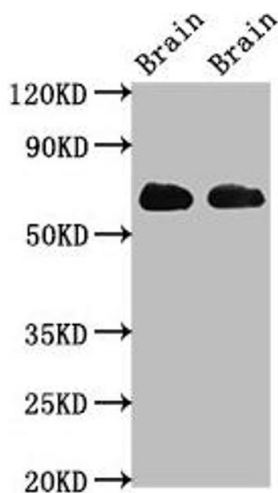
Storage: -20 °C,-80 °C

Storage Comment: Upon receipt, store at -20°C or -80°C. Avoid repeated freeze.



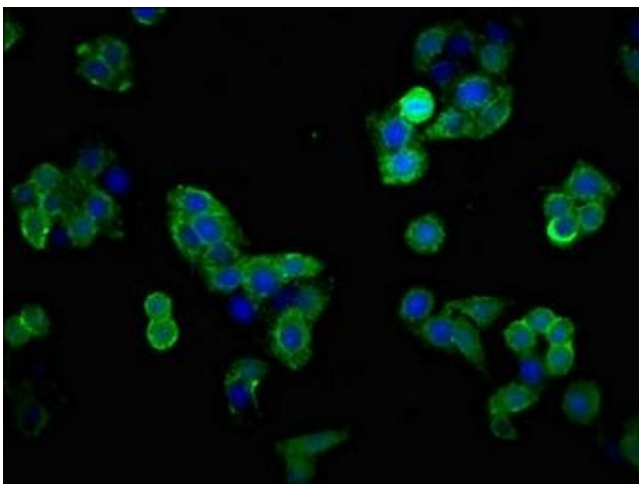
Immunohistochemistry

Image 1. Immunohistochemistry of paraffin-embedded human brain tissue using ABIN7152234 at dilution of 1:100



Western Blotting

Image 2. Western Blot Positive WB detected in: Rat brain tissue, Mouse brain tissue All lanes: SLC1A2 antibody at 3.2 µg/mL Secondary Goat polyclonal to rabbit IgG at 1/50000 dilution Predicted band size: 63, 62 kDa Observed band size: 63 kDa



Immunofluorescence

Image 3. Immunofluorescent analysis of PC-3 cells using ABIN7152234 at dilution of 1:100 and Alexa Fluor 488-conjugated AffiniPure Goat Anti-Rabbit IgG(H+L)