

Datasheet for ABIN7152242
anti-SLC1A7 antibody (AA 115-216)[Go to Product page](#)

1 Image

Overview

Quantity:	100 µL
Target:	SLC1A7
Binding Specificity:	AA 115-216
Reactivity:	Human
Host:	Rabbit
Clonality:	Polyclonal
Conjugate:	This SLC1A7 antibody is un-conjugated
Application:	ELISA, Western Blotting (WB)

Product Details

Immunogen:	Recombinant Human Excitatory amino acid transporter 5 protein (115-216aa)
Isotype:	IgG
Cross-Reactivity:	Human, Rat
Purification:	>95%, Protein G purified

Target Details

Target:	SLC1A7
Alternative Name:	SLC1A7 (SLC1A7 Products)
Background:	Background: Transports L-glutamate, the L-glutamate uptake is sodium- and voltage-dependent and chloride-independent. Its associated chloride conductance may participate in visual

Target Details

processing.

Aliases: Excitatory amino acid transporter 5 (Retinal glutamate transporter) (Solute carrier family 1 member 7), SLC1A7, EAAT5

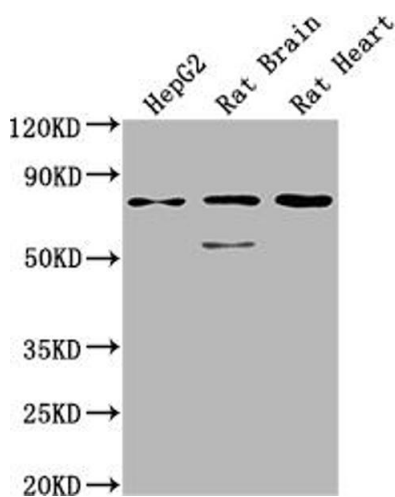
UniProt: [O00341](#)

Pathways: [Dicarboxylic Acid Transport](#)

Application Details

Application Notes:	Recommended dilution: WB:1:1000-1:5000,
Restrictions:	For Research Use only
Handling	
Format:	Liquid
Buffer:	Preservative: 0.03 % Proclin 300 Constituents: 50 % Glycerol, 0.01M PBS, pH 7.4
Preservative:	ProClin
Precaution of Use:	This product contains ProClin: a POISONOUS AND HAZARDOUS SUBSTANCE which should be handled by trained staff only.
Storage:	-20 °C,-80 °C
Storage Comment:	Upon receipt, store at -20°C or -80°C. Avoid repeated freeze.

Images



Western Blotting

Image 1. Western Blot Positive WB detected in: HepG2 whole cell lysate, Rat Brain tissue, Rat Heart tissue All lanes: SLC1A7 antibody at 1:2000 Secondary Goat polyclonal to rabbit IgG at 1/50000 dilution Predicted band size: 61, 18 kDa Observed band size: 75 kDa