



[Go to Product page](#)

Datasheet for ABIN7152247  
**anti-SLC1A7 antibody (AA 115-220)**

3 Images

### Overview

Quantity:	100 µL
Target:	SLC1A7
Binding Specificity:	AA 115-220
Reactivity:	Human
Host:	Rabbit
Clonality:	Polyclonal
Conjugate:	This SLC1A7 antibody is un-conjugated
Application:	ELISA, Immunohistochemistry (IHC), Western Blotting (WB), Immunofluorescence (IF)

### Product Details

Immunogen:	Recombinant Human Excitatory amino acid transporter 5 protein (115-220AA)
Isotype:	IgG
Cross-Reactivity:	Human, Rat
Purification:	Antigen Affinity Purified

### Target Details

Target:	SLC1A7
Alternative Name:	SLC1A7 ( <a href="#">SLC1A7 Products</a> )
Background:	Background: Transports L-glutamate, the L-glutamate uptake is sodium- and voltage-dependent and chloride-independent. Its associated chloride conductance may participate in visual

## Target Details

---

processing.

Aliases: AAAT antibody, EAA5\_HUMAN antibody, EAAT5 antibody, Excitatory amino acid transporter 5 (retinal glutamate transporter) antibody, Excitatory amino acid transporter 5 antibody, FLJ36602 antibody, Retinal glutamate transporter antibody, Slc1a7 antibody, Solute carrier family 1 (glutamate transporter) member 7 antibody, Solute carrier family 1 member 7 antibody

UniProt: [O00341](#)

Pathways: [Dicarboxylic Acid Transport](#)

## Application Details

---

Application Notes: Recommended dilution: WB:1:500-1:2000, IHC:1:20-1:200, IF:1:50-1:200,

Restrictions: For Research Use only

## Handling

---

Format: Liquid

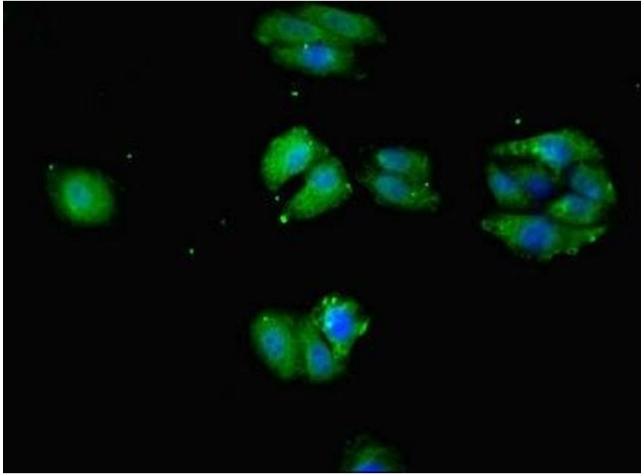
Buffer: PBS with 0.02 % sodium azide, 50 % glycerol, pH 7.3.

Preservative: Sodium azide

Precaution of Use: This product contains Sodium azide: a POISONOUS AND HAZARDOUS SUBSTANCE which should be handled by trained staff only.

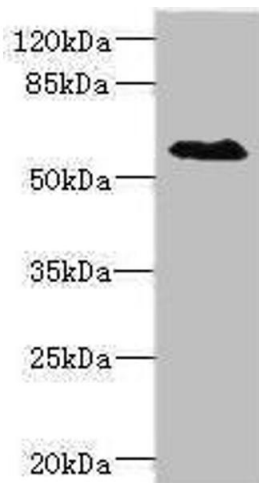
Storage: -20 °C,-80 °C

Storage Comment: Upon receipt, store at -20°C or -80°C. Avoid repeated freeze.



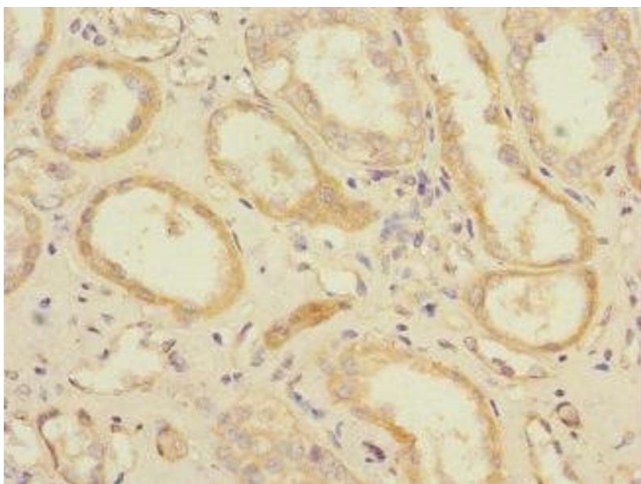
### Immunofluorescence

**Image 1.** Immunofluorescent analysis of HepG2 cells using ABIN7152247 at dilution of 1:100 and Alexa Fluor 488-conjugated AffiniPure Goat Anti-Rabbit IgG(H+L)



### Western Blotting

**Image 2.** Western blot All lanes: SLC1A7antibody IgG at 1.55 µg/mL + Rat heart tissue Secondary Goat polyclonal to rabbit IgG at 1/10000 dilution Predicted band size: 61, 18 kDa Observed band size: 61 kDa



### Immunohistochemistry

**Image 3.** Immunohistochemistry of paraffin-embedded human kidney tissue using ABIN7152247 at dilution of 1:100