

Datasheet for ABIN7152265
anti-Exonuclease 1 antibody (AA 301-600)[Go to Product page](#)

3 Images

Overview

Quantity:	100 µg
Target:	Exonuclease 1 (EX01)
Binding Specificity:	AA 301-600
Reactivity:	Human
Host:	Rabbit
Clonality:	Polyclonal
Conjugate:	This Exonuclease 1 antibody is un-conjugated
Application:	Western Blotting (WB), ELISA, Immunohistochemistry (IHC)

Product Details

Immunogen:	Recombinant Human Exonuclease 1 protein (301-600AA)
Isotype:	IgG
Cross-Reactivity:	Human
Purification:	>95%, Protein G purified

Target Details

Target:	Exonuclease 1 (EX01)
Alternative Name:	EX01 (EX01 Products)
Background:	Background: 5\'->3\' double-stranded DNA exonuclease which may also possess a cryptic 3\'->5\' double-stranded DNA exonuclease activity. Functions in DNA mismatch repair (MMR) to

Target Details

excise mismatch-containing DNA tracts directed by strand breaks located either 5' or 3' to the mismatch. Also exhibits endonuclease activity against 5'-overhanging flap structures similar to those generated by displacement synthesis when DNA polymerase encounters the 5'-end of a downstream Okazaki fragment. Required for somatic hypermutation (SHM) and class switch recombination (CSR) of immunoglobulin genes. Essential for male and female meiosis.

Aliases: exo1 antibody, EXO1_HUMAN antibody, Exo1 antibody, Exonuclease 1 antibody, Exonuclease I antibody, Exonuclease1 antibody, HEX1 antibody, hExo I antibody, hExo1 antibody, hExoI antibody, Rad2 nuclease family member homolog of S. cerevisiae exonuclease 1 antibody

UniProt: [Q9UQ84](#)

Pathways: [DNA Damage Repair](#), [Production of Molecular Mediator of Immune Response](#)

Application Details

Application Notes: Recommended dilution: WB:1:1000-1:5000, IHC:1:20-1:200,

Restrictions: For Research Use only

Handling

Format: Liquid

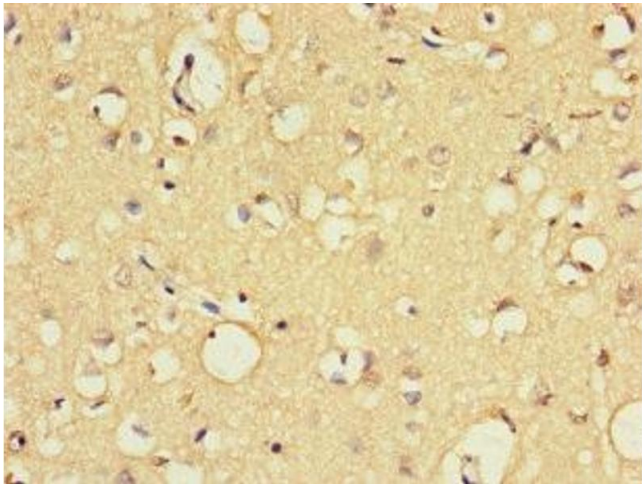
Buffer: Preservative: 0.03 % Proclin 300
Constituents: 50 % Glycerol, 0.01M PBS, PH 7.4

Preservative: ProClin

Precaution of Use: This product contains ProClin: a POISONOUS AND HAZARDOUS SUBSTANCE which should be handled by trained staff only.

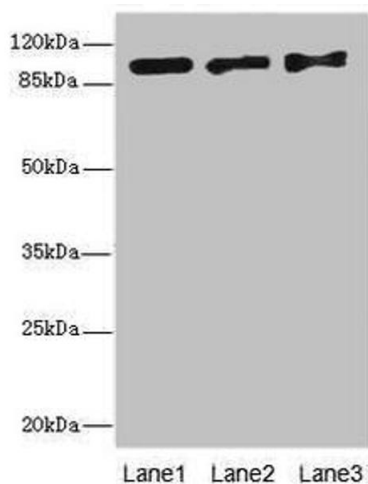
Storage: -20 °C,-80 °C

Storage Comment: Upon receipt, store at -20°C or -80°C. Avoid repeated freeze.



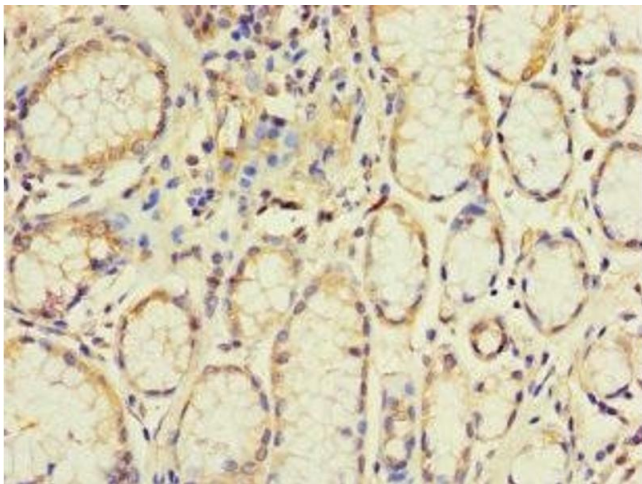
Immunohistochemistry

Image 1. Immunohistochemistry of paraffin-embedded human brain tissue using ABIN7152265 at dilution of 1:100



Western Blotting

Image 2. Western blot All lanes: EXO1 antibody at 10 µg/mL
Lane 1: Hela whole cell lysate Lane 2: 293T whole cell lysate
Lane 3: A549 whole cell lysate Secondary Goat polyclonal to rabbit IgG at 1/10000 dilution Predicted band size: 95, 90 kDa Observed band size: 95 kDa



Immunohistochemistry

Image 3. Immunohistochemistry of paraffin-embedded human stomach tissue using ABIN7152265 at dilution of 1:100