

Datasheet for ABIN7152293
anti-EXOSC5 antibody (AA 1-235)[Go to Product page](#)

3 Images

Overview

Quantity:	100 µg
Target:	EXOSC5
Binding Specificity:	AA 1-235
Reactivity:	Human
Host:	Rabbit
Clonality:	Polyclonal
Conjugate:	This EXOSC5 antibody is un-conjugated
Application:	ELISA, Western Blotting (WB), Immunohistochemistry (IHC)

Product Details

Immunogen:	Recombinant Human Exosome complex component RRP46 protein (1-235AA)
Isotype:	IgG
Cross-Reactivity:	Human
Purification:	>95%, Protein G purified

Target Details

Target:	EXOSC5
Alternative Name:	EXOSC5 (EXOSC5 Products)
Background:	Background: Non-catalytic component of the RNA exosome complex which has 3'→5' exoribonuclease activity and participates in a multitude of cellular RNA processing and

Target Details

degradation events. In the nucleus, the RNA exosome complex is involved in proper maturation of stable RNA species such as rRNA, snRNA and snoRNA, in the elimination of RNA processing by-products and non-coding '\pervasive\' transcripts, such as antisense RNA species and promoter-upstream transcripts (PROMPTs), and of mRNAs with processing defects, thereby limiting or excluding their export to the cytoplasm. The RNA exosome may be involved in Ig class switch recombination (CSR) and/or Ig variable region somatic hypermutation (SHM) by targeting AICDA deamination activity to transcribed dsDNA substrates. In the cytoplasm, the RNA exosome complex is involved in general mRNA turnover and specifically degrades inherently unstable mRNAs containing AU-rich elements (AREs) within their 3\' untranslated regions, and in RNA surveillance pathways, preventing translation of aberrant mRNAs. It seems to be involved in degradation of histone mRNA. The catalytic inactive RNA exosome core complex of 9 subunits (Exo-9) is proposed to play a pivotal role in the binding and presentation of RNA for ribonucleolysis, and to serve as a scaffold for the association with catalytic subunits and accessory proteins or complexes.

Aliases: Chronic myelogenous leukemia tumor antigen 28 antibody, CML28 antibody, EXOS5_HUMAN antibody, EXOSC 5 antibody, Exosc5 antibody, Exosome complex component rrp46 antibody, exosome complex exonuclease RRP46 antibody, Exosome component 5 antibody, exosome component Rrp46 antibody, hRrp46p antibody, p12B antibody, Ribosomal RNA processing protein 46 antibody, Ribosomal RNA processing protein 46, S. cerevisiae, homolog of antibody, Ribosomal RNA-processing protein 46 antibody, RRP41B antibody, RRP46 antibody, Rrp46p antibody

UniProt: [Q9NQT4](#)

Pathways: [SARS-CoV-2 Protein Interactome](#)

Application Details

Application Notes: Recommended dilution: WB:1:500-1:2000, IHC:1:20-1:200,

Restrictions: For Research Use only

Handling

Format: Liquid

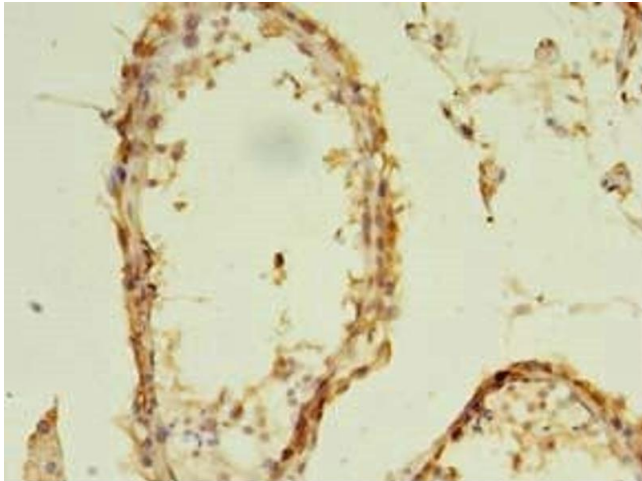
Buffer: Preservative: 0.03 % Proclin 300
Constituents: 50 % Glycerol, 0.01M PBS, PH 7.4

Preservative: ProClin

Handling

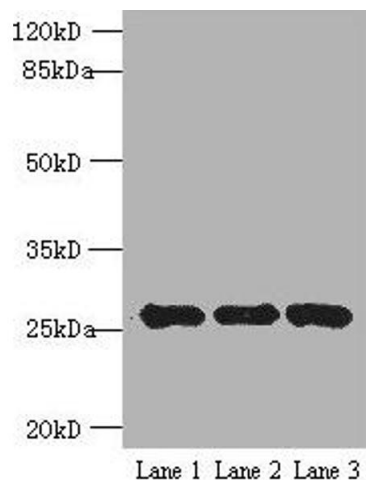
Precaution of Use:	This product contains ProClin: a POISONOUS AND HAZARDOUS SUBSTANCE which should be handled by trained staff only.
Storage:	-20 °C,-80 °C
Storage Comment:	Upon receipt, store at -20°C or -80°C. Avoid repeated freeze.

Images



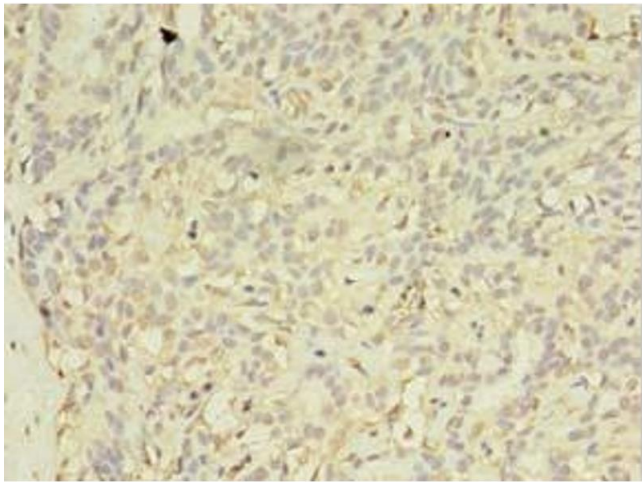
Immunohistochemistry

Image 1. Immunohistochemistry of paraffin-embedded human testis tissue using ABIN7152293 at dilution of 1:100



Western Blotting

Image 2. Western blot All lanes: EXOSC5 antibody at 5 µg/mL Lane 1: K562 whole cell lysate Lane 2: 293T whole cell lysate Lane 3: Hela whole cell lysate Secondary Goat polyclonal to rabbit IgG at 1/10000 dilution Predicted band size: 25 kDa Observed band size: 25 kDa



Immunohistochemistry

Image 3. Immunohistochemistry of paraffin-embedded human breast cancer using ABIN7152293 at dilution of 1:100