

Datasheet for ABIN7152321
anti-Exportin 2 antibody (AA 713-971)

3 Images

[Go to Product page](#)

Overview

Quantity:	100 µL
Target:	Exportin 2 (CSE1L)
Binding Specificity:	AA 713-971
Reactivity:	Human
Host:	Rabbit
Clonality:	Polyclonal
Conjugate:	This Exportin 2 antibody is un-conjugated
Application:	Western Blotting (WB), ELISA, Immunofluorescence (IF), Immunohistochemistry (IHC)

Product Details

Immunogen:	Recombinant Human Exportin-2 protein (713-971AA)
Isotype:	IgG
Cross-Reactivity:	Human
Purification:	>95%, Protein G purified

Target Details

Target:	Exportin 2 (CSE1L)
Alternative Name:	CSE1L (CSE1L Products)
Background:	Background: Export receptor for importin-alpha. Mediates importin-alpha re-export from the nucleus to the cytoplasm after import substrates (cargos) have been released into the

Target Details

nucleoplasm. In the nucleus binds cooperatively to importin- α and to the GTPase Ran in its active GTP-bound form. Docking of this trimeric complex to the nuclear pore complex (NPC) is mediated through binding to nucleoporins. Upon transit of a nuclear export complex into the cytoplasm, disassembling of the complex and hydrolysis of Ran-GTP to Ran-GDP (induced by RANBP1 and RANGAP1, respectively) cause release of the importin- α from the export receptor. CSE1L/XPO2 then return to the nuclear compartment and mediate another round of transport. The directionality of nuclear export is thought to be conferred by an asymmetric distribution of the GTP- and GDP-bound forms of Ran between the cytoplasm and nucleus.

Aliases: CAS antibody, Cellular apoptosis susceptibility protein antibody, Chromosome segregation 1 (yeast homolog) like antibody, Chromosome segregation 1 Like antibody, Chromosome segregation 1 like protein antibody, Chromosome segregation 1-like protein antibody, Chromosome segregation gene CSE1 antibody, CSE 1 antibody, CSE 1 chromosome segregation 1 like antibody, CSE 1 chromosome segregation 1 like protein antibody, CSE 1L antibody, CSE1 antibody, CSE1 chromosome segregation 1 like (yeast) antibody, CSE1 chromosome segregation 1 like antibody, CSE1 chromosome segregation 1 like protein antibody, CSE1L antibody, Exp 2 antibody, Exp2 antibody, Exportin 2 antibody, Exportin-2 antibody, Exportin2 antibody, Importin alpha re exporter antibody, Importin- α re-exporter antibody, MGC117283 antibody, MGC130036 antibody, MGC130037 antibody, XPO 2 antibody, XPO2 antibody, XPO2_HUMAN antibody

UniProt: [P55060](#)

Pathways: [Protein targeting to Nucleus](#)

Application Details

Application Notes: Recommended dilution: WB:1:1000-1:5000, IHC:1:200-1:500, IF:1:50-1:200,

Restrictions: For Research Use only

Handling

Format: Liquid

Buffer: Preservative: 0.03 % Proclin 300
Constituents: 50 % Glycerol, 0.01M PBS, pH 7.4

Preservative: ProClin

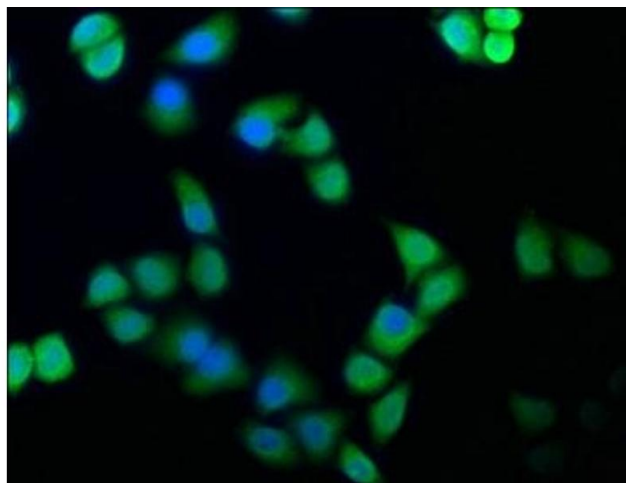
Precaution of Use: This product contains ProClin: a POISONOUS AND HAZARDOUS SUBSTANCE which should be handled by trained staff only.

Handling

Storage: -20 °C, -80 °C

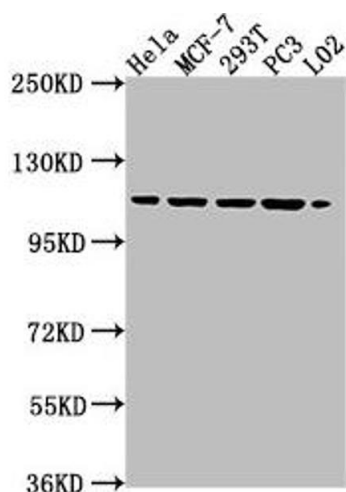
Storage Comment: Upon receipt, store at -20°C or -80°C. Avoid repeated freeze.

Images



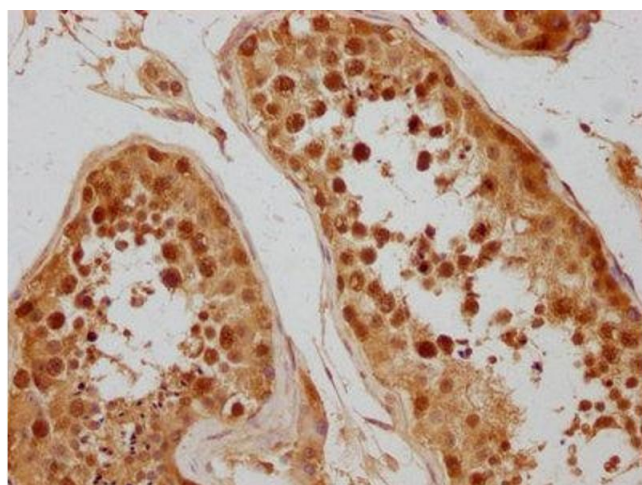
Immunofluorescence

Image 1. Immunofluorescence staining of HeLa cells with ABIN7152321 at 1:100, counter-stained with DAPI. The cells were fixed in 4 % formaldehyde, permeabilized using 0.2 % Triton X-100 and blocked in 10 % normal Goat Serum. The cells were then incubated with the antibody overnight at 4 °C. The secondary antibody was Alexa Fluor 488-conjugated AffiniPure Goat Anti-Rabbit IgG(H+L).



Western Blotting

Image 2. Western Blot Positive WB detected in: HeLa whole cell lysate, MCF-7 whole cell lysate, 293T whole cell lysate, PC3 whole cell lysate, L02 whole cell lysate. All lanes: CSE1L antibody at 1:2000. Secondary Goat polyclonal to rabbit IgG at 1/50000 dilution. Predicted band size: 111, 23, 108, 104 kDa. Observed band size: 111 kDa.



Immunohistochemistry

Image 3. IHC image of ABIN7152321 diluted at 1:300 and staining in paraffin-embedded human testis tissue performed on a Leica Bond™ system. After dewaxing and hydration, antigen retrieval was mediated by high pressure in a citrate buffer (pH 6.0). Section was blocked with 10 % normal goat serum 30 min at RT. Then primary antibody (1 % BSA) was incubated at 4 °C overnight. The primary is detected by a biotinylated secondary antibody and visualized using an HRP conjugated SP system.