

Datasheet for ABIN7152325
anti-Exportin 6 antibody (AA 290-530)



[Go to Product page](#)

2 Images

Overview

Quantity:	100 µL
Target:	Exportin 6 (XPO6)
Binding Specificity:	AA 290-530
Reactivity:	Human
Host:	Rabbit
Clonality:	Polyclonal
Conjugate:	This Exportin 6 antibody is un-conjugated
Application:	Immunohistochemistry (IHC), ELISA

Product Details

Immunogen:	Recombinant Human Exportin-6 protein (290-530AA)
Isotype:	IgG
Cross-Reactivity:	Human
Purification:	Antigen Affinity Purified

Target Details

Target:	Exportin 6 (XPO6)
Alternative Name:	XPO6 (XPO6 Products)
Background:	Background: Mediates the nuclear export of actin and profilin-actin complexes in somatic cells. Aliases: Exp6 antibody, Exportin 6 antibody, Exportin-6 antibody, RAN binding protein 20

Target Details

antibody, Ran-binding protein 20 antibody, RANBP20 antibody, xpo6 antibody, XPO6_HUMAN antibody

UniProt: [Q96QU8](#)

Application Details

Application Notes: Recommended dilution: IHC:1:20-1:200,

Restrictions: For Research Use only

Handling

Format: Liquid

Buffer: PBS with 0.02 % sodium azide, 50 % glycerol, pH 7.3.

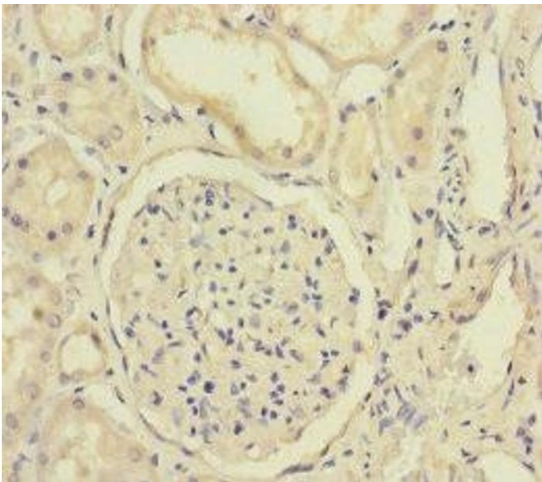
Preservative: Sodium azide

Precaution of Use: This product contains Sodium azide: a POISONOUS AND HAZARDOUS SUBSTANCE which should be handled by trained staff only.

Storage: -20 °C,-80 °C

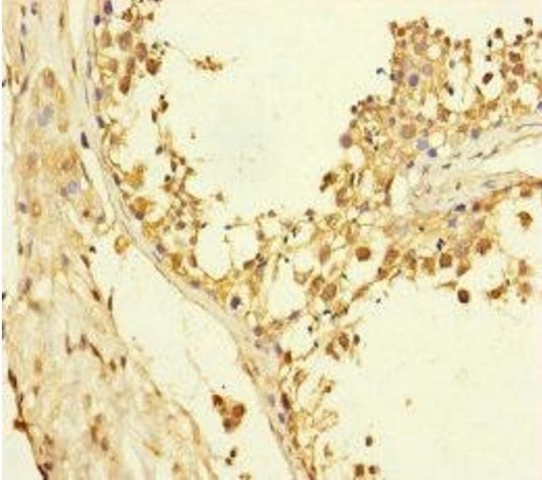
Storage Comment: Upon receipt, store at -20°C or -80°C. Avoid repeated freeze.

Images



Immunohistochemistry

Image 1. Immunohistochemistry of paraffin-embedded human kidney tissue using ABIN7152325 at dilution of 1:100



Immunohistochemistry

Image 2. Immunohistochemistry of paraffin-embedded human testis tissue using ABIN7152325 at dilution of 1:100