

Datasheet for ABIN7152338
anti-SERF2 antibody (AA 107-224)[Go to Product page](#)

3 Images

Overview

Quantity:	100 µg
Target:	SERF2
Binding Specificity:	AA 107-224
Reactivity:	Human
Host:	Rabbit
Clonality:	Polyclonal
Conjugate:	This SERF2 antibody is un-conjugated
Application:	ELISA, Western Blotting (WB), Immunohistochemistry (IHC)

Product Details

Immunogen:	Recombinant Human Extracellular serine/threonine protein kinase FAM20C protein (107-224AA)
Isotype:	IgG
Cross-Reactivity:	Human
Purification:	>95%, Protein G purified

Target Details

Target:	SERF2
Alternative Name:	FAM2C (SERF2 Products)
Background:	Background: Golgi serine/threonine protein kinase that phosphorylates secretory pathway

Target Details

proteins within Ser-x-Glu/pSer motifs and plays a key role in biomineralization of bones and teeth (PubMed:22582013, PubMed:23754375, PubMed:25789606). Constitutes the main protein kinase for extracellular proteins, generating the majority of the extracellular phosphoproteome (PubMed:26091039). Mainly phosphorylates proteins within the Ser-x-Glu/pSer motif, but also displays a broader substrate specificity (PubMed:26091039). Phosphorylates casein as well as a number of proteins involved in biomineralization such as AMELX, AMTN, ENAM and SPP1 (PubMed:22582013, PubMed:25789606). In addition to its role in biomineralization, also plays a role in lipid homeostasis, wound healing and cell migration and adhesion (PubMed:26091039).

Aliases: C76981 antibody, Dentin matrix protein 4 antibody, DKFZp547C074 antibody, DMP-4 antibody, DMP4 antibody, DMP4_HUMAN antibody, Extracellular serine/threonine protein kinase Fam20C antibody, Fam20c antibody, Family with sequence similarity 20 member C antibody, GEF CK antibody, Golgi enriched fraction casein kinase antibody, Protein FAM20C antibody, RNS antibody

UniProt: [Q8IXL6](#)

Application Details

Application Notes: Recommended dilution: WB:1:500-1:5000, IHC:1:500-1:1000,

Restrictions: For Research Use only

Handling

Format: Liquid

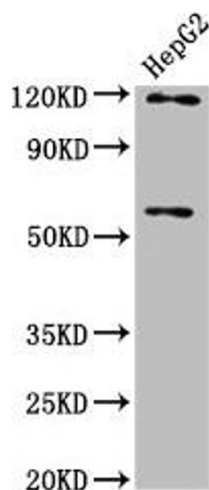
Buffer: Preservative: 0.03 % Proclin 300
Constituents: 50 % Glycerol, 0.01M PBS, pH 7.4

Preservative: ProClin

Precaution of Use: This product contains ProClin: a POISONOUS AND HAZARDOUS SUBSTANCE which should be handled by trained staff only.

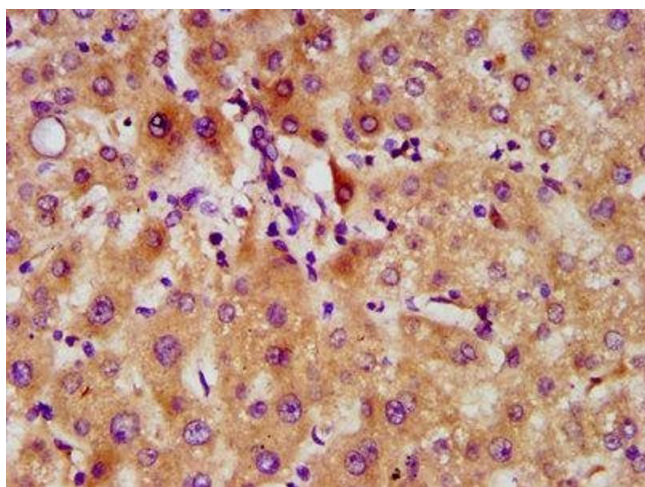
Storage: -20 °C, -80 °C

Storage Comment: Upon receipt, store at -20°C or -80°C. Avoid repeated freeze.



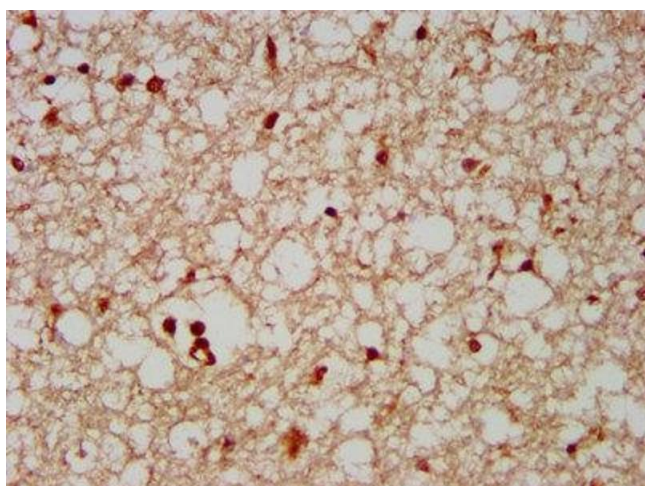
Western Blotting

Image 1. Western Blot Positive WB detected in: HepG2 whole cell lysate All lanes: FAM20C antibody at 4.1 µg/mL Secondary Goat polyclonal to rabbit IgG at 1/50000 dilution Predicted band size: 67, 30 kDa Observed band size: 67 kDa



Immunohistochemistry

Image 2. IHC image of ABIN7152338 diluted at 1:500 and staining in paraffin-embedded human liver tissue performed on a Leica Bond™ system. After dewaxing and hydration, antigen retrieval was mediated by high pressure in a citrate buffer (pH 6.0). Section was blocked with 10% normal goat serum 30min at RT. Then primary antibody (1% BSA) was incubated at 4°C overnight. The primary is detected by a biotinylated secondary antibody and visualized using an HRP conjugated SP system.



Immunohistochemistry

Image 3. IHC image of ABIN7152338 diluted at 1:500 and staining in paraffin-embedded human brain tissue performed on a Leica Bond™ system. After dewaxing and hydration, antigen retrieval was mediated by high pressure in a citrate buffer (pH 6.0). Section was blocked with 10% normal goat serum 30min at RT. Then primary antibody (1% BSA) was incubated at 4°C overnight. The primary is detected by a biotinylated secondary antibody and visualized using an HRP conjugated SP system.