



[Go to Product page](#)

Datasheet for ABIN7152386
anti-FCHSD2 antibody (AA 1-290)

3 Images

Overview

Quantity:	100 µg
Target:	FCHSD2
Binding Specificity:	AA 1-290
Reactivity:	Human
Host:	Rabbit
Clonality:	Polyclonal
Conjugate:	This FCHSD2 antibody is un-conjugated
Application:	ELISA, Western Blotting (WB), Immunohistochemistry (IHC)

Product Details

Immunogen:	Recombinant Human F-BAR and double SH3 domains protein 2 protein (1-290AA)
Isotype:	IgG
Cross-Reactivity:	Human
Purification:	>95%, Protein G purified

Target Details

Target:	FCHSD2
Alternative Name:	FCHSD2 (FCHSD2 Products)
Background:	FCHSD2 antibody, KIAA0769 antibody, SH3MD3F-BAR and double SH3 domains protein 2 antibody, Carom antibody, Protein nervous wreck 1 antibody, NWK1 antibody, SH3 multiple

Target Details

domains protein 3 antibody

UniProt: [O94868](#)

Application Details

Application Notes: Recommended dilution: WB:1:500-1:2000, IHC:1:20-1:200,

Restrictions: For Research Use only

Handling

Format: Liquid

Buffer: Preservative: 0.03 % Proclin 300
Constituents: 50 % Glycerol, 0.01M PBS, PH 7.4

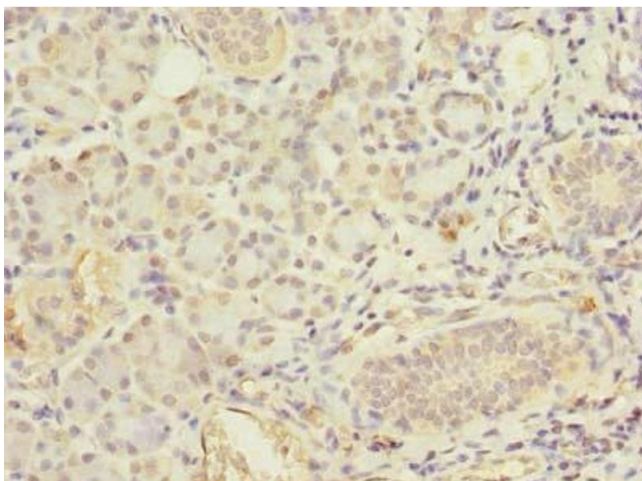
Preservative: ProClin

Precaution of Use: This product contains ProClin: a POISONOUS AND HAZARDOUS SUBSTANCE which should be handled by trained staff only.

Storage: -20 °C,-80 °C

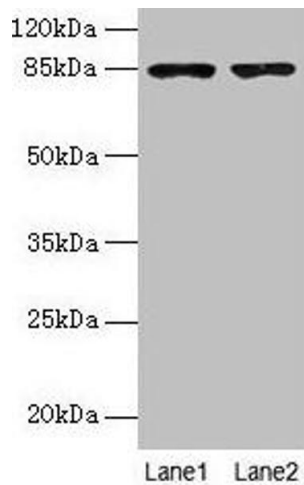
Storage Comment: Upon receipt, store at -20°C or -80°C. Avoid repeated freeze.

Images



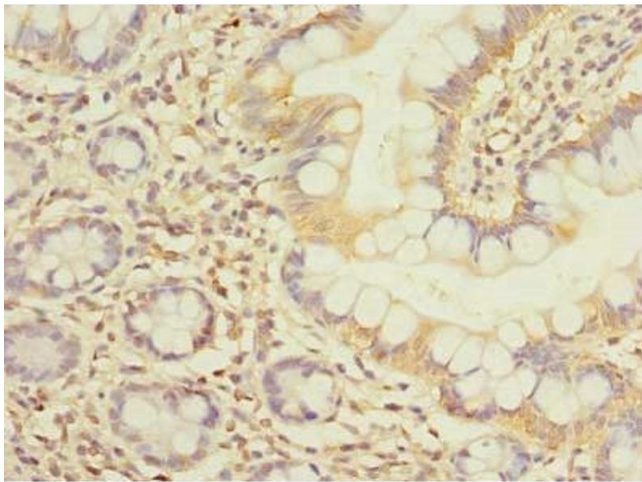
Immunohistochemistry

Image 1. Immunohistochemistry of paraffin-embedded human pancreatic tissue using ABIN7152386 at dilution of 1:100



Western Blotting

Image 2. Western blot All lanes: FCHSD2 antibody at 12 μ g/mL Lane 1: U251 whole cell lysate Lane 2: A549 whole cell lysate Secondary Goat polyclonal to rabbit IgG at 1/10000 dilution Predicted band size: 85, 78, 59 kDa Observed band size: 85 kDa



Immunohistochemistry

Image 3. Immunohistochemistry of paraffin-embedded human small intestine tissue using ABIN7152386 at dilution of 1:100