



[Go to Product page](#)

Datasheet for ABIN7152394  
**anti-FCHO2 antibody (AA 100-203)**

2 Images

Overview

Quantity:	100 µg
Target:	FCHO2
Binding Specificity:	AA 100-203
Reactivity:	Human
Host:	Rabbit
Clonality:	Polyclonal
Conjugate:	This FCHO2 antibody is un-conjugated
Application:	Western Blotting (WB), ELISA, Immunofluorescence (IF)

Product Details

Immunogen:	Recombinant Human F-BAR domain only protein 2 protein (100-203AA)
Isotype:	IgG
Cross-Reactivity:	Human, Mouse
Purification:	>95%, Protein G purified

Target Details

Target:	FCHO2
Alternative Name:	FCHO2 ( <a href="#">FCHO2 Products</a> )
Background:	Background: Functions in an early step of clathrin-mediated endocytosis. Has both a membrane binding/bending activity and the ability to recruit proteins essential to the formation

## Target Details

---

of functional clathrin-coated pits. Has a lipid-binding activity with a preference for membranes enriched in phosphatidylserine and phosphoinositides (Pi(4,5) biphosphate) like the plasma membrane. Its membrane-bending activity might be important for the subsequent action of clathrin and adaptors in the formation of clathrin-coated vesicles. Involved in adaptor protein complex AP-2-dependent endocytosis of the transferin receptor, it also functions in the AP-2-independent endocytosis of the LDL receptor.

Aliases: FCHO2F-BAR domain only protein 2 antibody

---

UniProt: [Q0JRZ9](#)

## Application Details

---

Application Notes: Recommended dilution: WB:1:500-1:5000, IF:1:50-1:200,

Restrictions: For Research Use only

## Handling

---

Format: Liquid

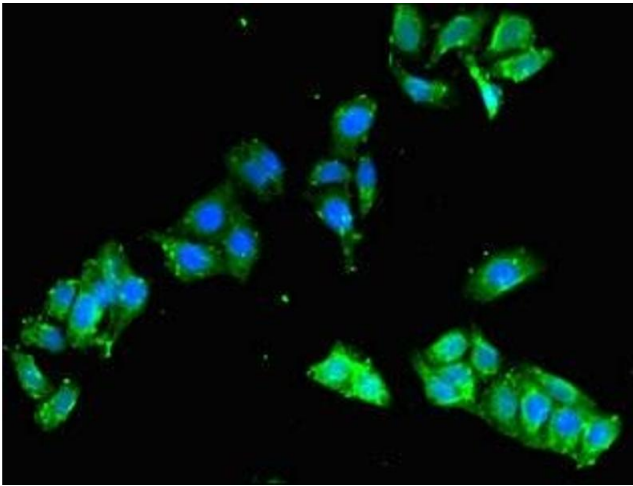
Buffer: Preservative: 0.03 % Proclin 300  
Constituents: 50 % Glycerol, 0.01M PBS, PH 7.4

Preservative: ProClin

Precaution of Use: This product contains ProClin: a POISONOUS AND HAZARDOUS SUBSTANCE which should be handled by trained staff only.

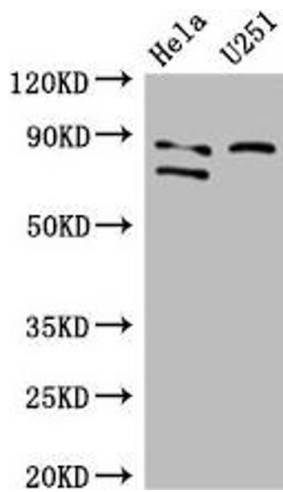
Storage: -20 °C,-80 °C

Storage Comment: Upon receipt, store at -20°C or -80°C. Avoid repeated freeze.



### Immunofluorescence

**Image 1.** Immunofluorescent analysis of HepG2 cells using ABIN7152394 at dilution of 1:100 and Alexa Fluor 488-conjugated AffiniPure Goat Anti-Rabbit IgG(H+L)



### Western Blotting

**Image 2.** Western Blot Positive WB detected in: HeLa whole cell lysate, U251 whole cell lysate All lanes: FCHO2 antibody at 3 µg/mL Secondary Goat polyclonal to rabbit IgG at 1/50000 dilution Predicted band size: 89, 44, 86 kDa Observed band size: 89, 86 kDa