

Datasheet for ABIN7152402
anti-Cyclin F antibody (AA 248-400)

4 Images

[Go to Product page](#)

Overview

Quantity:	100 µg
Target:	Cyclin F (CCNF)
Binding Specificity:	AA 248-400
Reactivity:	Human
Host:	Rabbit
Clonality:	Polyclonal
Conjugate:	This Cyclin F antibody is un-conjugated
Application:	Western Blotting (WB), ELISA, Immunohistochemistry (IHC), Immunofluorescence (IF)

Product Details

Immunogen:	Recombinant Human F-box only protein 10 protein (248-400AA)
Isotype:	IgG
Cross-Reactivity:	Human
Purification:	>95%, Protein G purified

Target Details

Target:	Cyclin F (CCNF)
Alternative Name:	FBX01 (CCNF Products)
Background:	Background: Substrate-recognition component of the SCF (SKP1-CUL1-F-box protein)-type E3 ubiquitin ligase complex. The SCF(FBX010) complex mediates ubiquitination and degradation

Target Details

of BCL2, an antiapoptotic protein, thereby playing a role in apoptosis by controlling the stability of BCL2.

Aliases: F box protein 10 antibody, F-box only protein 10 antibody, FBX10 antibody, FBX10_HUMAN antibody, Fbxo10 antibody, hCG_2011110 antibody, PRMT11 antibody

UniProt: [Q9UK96](#)

Application Details

Application Notes: Recommended dilution: WB:1:500-1:5000, IHC:1:500-1:1000, IF:1:50-1:200,

Restrictions: For Research Use only

Handling

Format: Liquid

Buffer: Preservative: 0.03 % Proclin 300
Constituents: 50 % Glycerol, 0.01M PBS, pH 7.4

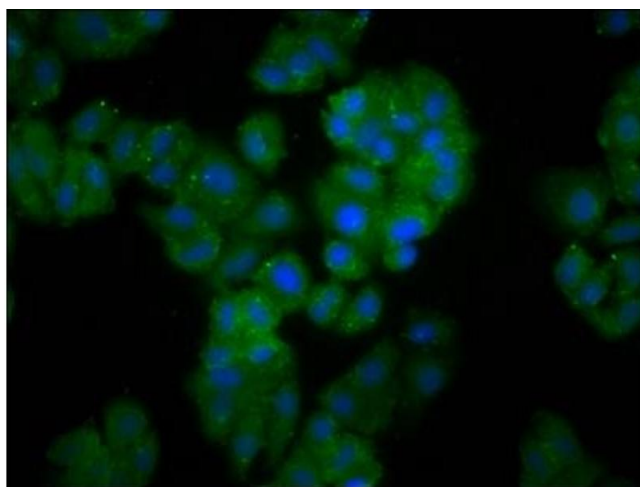
Preservative: ProClin

Precaution of Use: This product contains ProClin: a POISONOUS AND HAZARDOUS SUBSTANCE which should be handled by trained staff only.

Storage: -20 °C,-80 °C

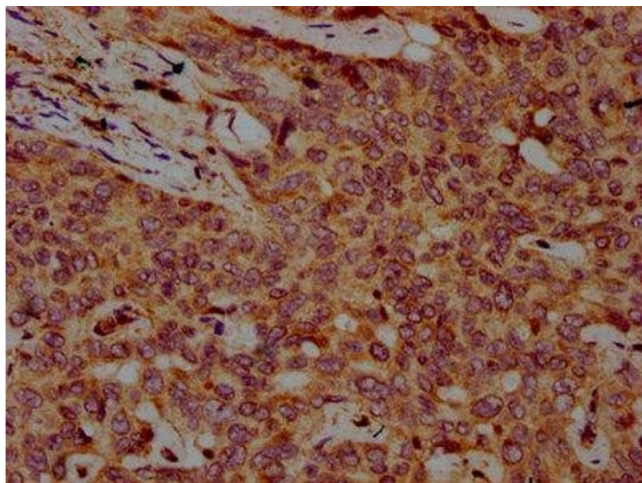
Storage Comment: Upon receipt, store at -20°C or -80°C. Avoid repeated freeze.

Images



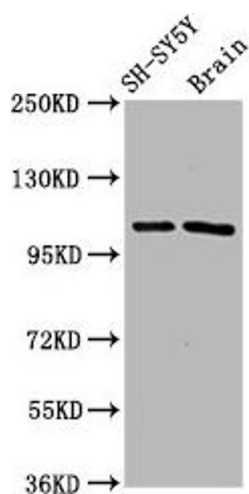
Immunofluorescence

Image 1. Immunofluorescence staining of HepG2 cells with ABIN7152402 at 1:166, counter-stained with DAPI. The cells were fixed in 4 % formaldehyde, permeabilized using 0.2 % Triton X-100 and blocked in 10 % normal Goat Serum. The cells were then incubated with the antibody overnight at 4 °C. The secondary antibody was Alexa Fluor 488-conjugated AffiniPure Goat Anti-Rabbit IgG(H+L).



Immunohistochemistry

Image 2. IHC image of ABIN7152402 diluted at 1:500 and staining in paraffin-embedded human liver cancer performed on a Leica Bond™ system. After dewaxing and hydration, antigen retrieval was mediated by high pressure in a citrate buffer (pH 6.0). Section was blocked with 10 % normal goat serum 30 min at RT. Then primary antibody (1 % BSA) was incubated at 4 °C overnight. The primary is detected by a biotinylated secondary antibody and visualized using an HRP conjugated SP system.



Western Blotting

Image 3. Western Blot Positive WB detected in: SH-SY5Y whole cell lysate, Rat brain tissue All lanes: FBXO10 antibody at 4.8 µg/mL Secondary Goat polyclonal to rabbit IgG at 1/50000 dilution Predicted band size: 106, 53 kDa Observed band size: 106 kDa

Please check the [product details page](#) for more images. Overall 4 images are available for ABIN7152402.