

Datasheet for ABIN7152472
anti-FBXL2 antibody (AA 1-423)[Go to Product page](#)

1 Image

Overview

Quantity:	100 µg
Target:	FBXL2
Binding Specificity:	AA 1-423
Reactivity:	Human
Host:	Rabbit
Clonality:	Polyclonal
Conjugate:	This FBXL2 antibody is un-conjugated
Application:	ELISA, Immunofluorescence (IF)

Product Details

Immunogen:	Recombinant Human F-box/LRR-repeat protein 2 protein (1-423AA)
Isotype:	IgG
Cross-Reactivity:	Human
Purification:	>95%, Protein G purified

Target Details

Target:	FBXL2
Alternative Name:	FBXL2 (FBXL2 Products)
Background:	Background: Calcium-activated substrate recognition component of the SCF (SKP1-cullin-F-box protein) E3 ubiquitin-protein ligase complex, SCF(FBXL2), which mediates the ubiquitination

Target Details

and subsequent proteasomal degradation of target proteins. Unlike many F-box proteins, FBXL2 does not seem to target phosphodegron within its substrates but rather calmodulin-binding motifs and is thereby antagonized by calmodulin. This is the case for the cyclins CCND2 and CCND3 which polyubiquitination and subsequent degradation are inhibited by calmodulin. Through CCND2 and CCND3 degradation induces cell-cycle arrest in G(0) (PubMed:22020328, PubMed:22323446). SCF(FBXL2) also mediates PIK3R2 ubiquitination and proteasomal degradation thereby regulating phosphatidylinositol 3-kinase signaling and autophagy (PubMed:23604317). PCYT1A monoubiquitination by SCF(FBXL2) and subsequent degradation regulates synthesis of phosphatidylcholine, which is utilized for formation of membranes and of pulmonary surfactant (By similarity).

Aliases: DKFZP564P0622 antibody, F box and leucine rich repeat protein 2 antibody, F box protein containing leucine rich repeats antibody, F box protein FBL2/FBL3 antibody, F box/LRR repeat protein 2 antibody, F-box and leucine-rich repeat protein 2 antibody, F-box protein FBL2/FBL3 antibody, F-box/LRR-repeat protein 2 antibody, FBL 2 antibody, FBL 3 antibody, FBL2 antibody, FBL3 antibody, FBXL 2 antibody, FBXL2 antibody, FBXL2_HUMAN antibody

UniProt: [Q9UKC9](#)

Application Details

Application Notes: Recommended dilution: IF:1:50-1:200,

Restrictions: For Research Use only

Handling

Format: Liquid

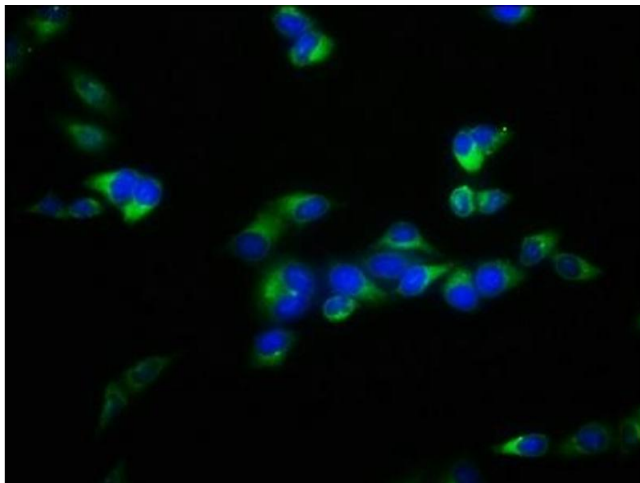
Buffer: Preservative: 0.03 % Proclin 300
Constituents: 50 % Glycerol, 0.01M PBS, PH 7.4

Preservative: ProClin

Precaution of Use: This product contains ProClin: a POISONOUS AND HAZARDOUS SUBSTANCE which should be handled by trained staff only.

Storage: -20 °C,-80 °C

Storage Comment: Upon receipt, store at -20°C or -80°C. Avoid repeated freeze.



Immunofluorescence

Image 1. Immunofluorescence staining of HeLa cells with ABIN7152472 at 1:100, counter-stained with DAPI. The cells were fixed in 4 % formaldehyde, permeabilized using 0.2 % Triton X-100 and blocked in 10 % normal Goat Serum. The cells were then incubated with the antibody overnight at 4 °C. The secondary antibody was Alexa Fluor 488-conjugated AffiniPure Goat Anti-Rabbit IgG(H+L).