

Datasheet for ABIN7152476
anti-FBXL2 antibody (AA 1-137)[Go to Product page](#)

1 Image

Overview

Quantity:	100 µg
Target:	FBXL2
Binding Specificity:	AA 1-137
Reactivity:	Human
Host:	Rabbit
Clonality:	Polyclonal
Conjugate:	This FBXL2 antibody is un-conjugated
Application:	ELISA, Immunohistochemistry (IHC)

Product Details

Immunogen:	Recombinant Human F-box/LRR-repeat protein 20 protein (1-137AA)
Isotype:	IgG
Cross-Reactivity:	Human
Purification:	>95%, Protein G purified

Target Details

Target:	FBXL2
Alternative Name:	FBXL2 (FBXL2 Products)
Background:	Background: Substrate-recognition component of the SCF (SKP1-CUL1-F-box protein)-type E3 ubiquitin ligase complex. Role in neural transmission (By similarity).

Target Details

Aliases: FBXL20 antibody, FBL2F-box/LRR-repeat protein 20 antibody, F-box and leucine-rich repeat protein 20 antibody, F-box/LRR-repeat protein 2-like antibody

UniProt: [Q96IG2](#)

Application Details

Application Notes: Recommended dilution: IHC:1:500-1:1000,

Restrictions: For Research Use only

Handling

Format: Liquid

Buffer: Preservative: 0.03 % Proclin 300
Constituents: 50 % Glycerol, 0.01M PBS, pH 7.4

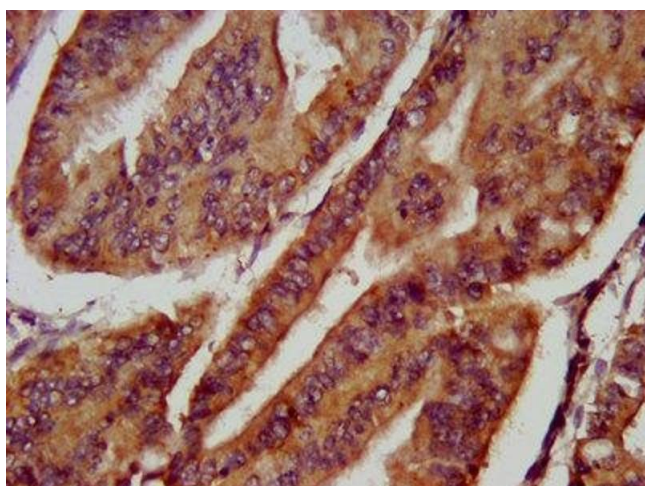
Preservative: ProClin

Precaution of Use: This product contains ProClin: a POISONOUS AND HAZARDOUS SUBSTANCE which should be handled by trained staff only.

Storage: -20 °C,-80 °C

Storage Comment: Upon receipt, store at -20°C or -80°C. Avoid repeated freeze.

Images



Immunohistochemistry

Image 1. IHC image of ABIN7152476 diluted at 1:800 and staining in paraffin-embedded human endometrial cancer performed on a Leica Bond™ system. After dewaxing and hydration, antigen retrieval was mediated by high pressure in a citrate buffer (pH 6.0). Section was blocked with 10% normal goat serum 30min at RT. Then primary antibody (1% BSA) was incubated at 4°C overnight. The primary is detected by a biotinylated secondary antibody and visualized using an HRP conjugated SP system.