



[Go to Product page](#)

Datasheet for ABIN7152491

anti-FBXW12 antibody (AA 1-250)

2 Images

Overview

Quantity:	100 µg
Target:	FBXW12
Binding Specificity:	AA 1-250
Reactivity:	Human
Host:	Rabbit
Clonality:	Polyclonal
Conjugate:	This FBXW12 antibody is un-conjugated
Application:	ELISA, Immunohistochemistry (IHC)

Product Details

Immunogen:	Recombinant Human F-box/WD repeat-containing protein 12 protein (1-250AA)
Isotype:	IgG
Cross-Reactivity:	Human
Purification:	>95%, Protein G purified

Target Details

Target:	FBXW12
Alternative Name:	FBXW12 (FBXW12 Products)
Background:	Background: Substrate-recognition component of the SCF (SKP1-CUL1-F-box protein)-type E3 ubiquitin ligase complex.

Target Details

Aliases: FBXW12 antibody, FBW12 antibody, FBXO12 antibody, FBXO35F-box/WD repeat-containing protein 12 antibody, F-box and WD-40 domain-containing protein 12 antibody, F-box only protein 35 antibody

UniProt: [Q6X9E4](#)

Application Details

Application Notes: Recommended dilution: IHC:1:20-1:200,

Restrictions: For Research Use only

Handling

Format: Liquid

Buffer: Preservative: 0.03 % Proclin 300
Constituents: 50 % Glycerol, 0.01M PBS, PH 7.4

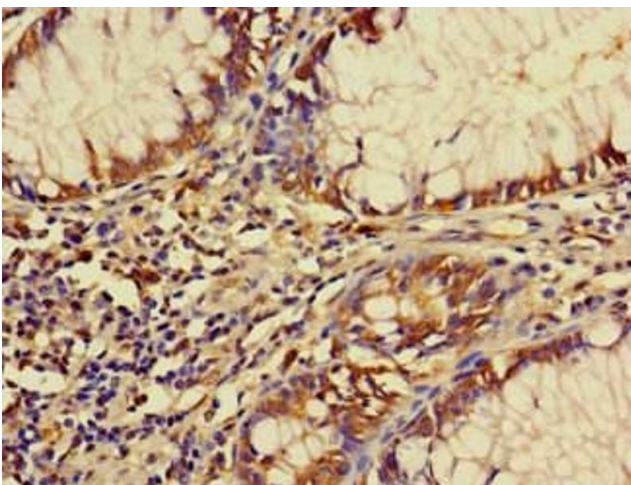
Preservative: ProClin

Precaution of Use: This product contains ProClin: a POISONOUS AND HAZARDOUS SUBSTANCE which should be handled by trained staff only.

Storage: -20 °C,-80 °C

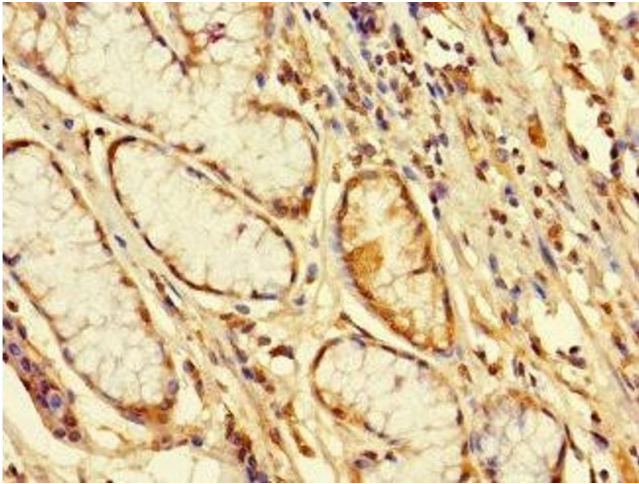
Storage Comment: Upon receipt, store at -20°C or -80°C. Avoid repeated freeze.

Images



Immunohistochemistry

Image 1. Immunohistochemistry of paraffin-embedded human colon cancer using ABIN7152491 at dilution of 1:100



Immunohistochemistry

Image 2. Immunohistochemistry of paraffin-embedded human gastric cancer using ABIN7152491 at dilution of 1:100