

Datasheet for ABIN7152566
anti-FAN1 antibody (AA 167-373)[Go to Product page](#)

2 Images

Overview

| | |
|----------------------|--|
| Quantity: | 100 µg |
| Target: | FAN1 |
| Binding Specificity: | AA 167-373 |
| Reactivity: | Human |
| Host: | Rabbit |
| Clonality: | Polyclonal |
| Conjugate: | This FAN1 antibody is un-conjugated |
| Application: | ELISA, Western Blotting (WB), Immunohistochemistry (IHC) |

Product Details

| | |
|-------------------|---|
| Immunogen: | Recombinant Human Fanconi-associated nuclease 1 protein (167-373AA) |
| Isotype: | IgG |
| Cross-Reactivity: | Human |
| Purification: | >95%, Protein G purified |

Target Details

| | |
|-------------------|---|
| Target: | FAN1 |
| Alternative Name: | FAN1 (FAN1 Products) |
| Background: | Background: Nuclease required for the repair of DNA interstrand cross-links (ICL) recruited at sites of DNA damage by monoubiquitinated FANCD2. Specifically involved in repair of ICL- |

Target Details

induced DNA breaks by being required for efficient homologous recombination, probably in the resolution of homologous recombination intermediates (PubMed:20603015, PubMed:20603016, PubMed:20603073, PubMed:20671156, PubMed:24981866, PubMed:25430771). Not involved in DNA double-strand breaks resection (PubMed:20603015, PubMed:20603016). Acts as a 5'→3' exonuclease that anchors at a cut end of DNA and cleaves DNA successively at every third nucleotide, allowing to excise an ICL from one strand through flanking incisions. Probably keeps excising with 3'-flap annealing until it reaches and unhooks the ICL (PubMed:25430771). Acts at sites that have a 5'-terminal phosphate anchor at a nick or a 1- or 2-nucleotide flap and is augmented by a 3' flap (PubMed:25430771). Also has endonuclease activity toward 5'-flaps (PubMed:20603015, PubMed:20603016, PubMed:24981866).

Aliases: 6030441H18Rik antibody, Coiled coil domain containing protein MTMR15 antibody, DKFZp451H236 antibody, DKFZp686K16147 antibody, FAN1 antibody, FAN1_HUMAN antibody, FANCD2 and FANCI associated nuclease 1 antibody, FANCD2/FANCI associated nuclease 1 antibody, FANCD2/FANCI-associated nuclease 1 antibody, Fanconi associated nuclease 1 antibody, Fanconi-associated nuclease 1 antibody, hFAN1 antibody, KIAA1018 antibody, KMIN antibody, MTMR 15 antibody, MTMR15 antibody, Myotubularin related protein 15 antibody, Myotubularin-related protein 15 antibody

UniProt: [Q9Y2M0](#)

Pathways: [DNA Damage Repair](#)

Application Details

Application Notes: Recommended dilution: WB:1:500-1:5000, IHC:1:200-1:500,

Restrictions: For Research Use only

Handling

Format: Liquid

Buffer: Preservative: 0.03 % Proclin 300
Constituents: 50 % Glycerol, 0.01M PBS, pH 7.4

Preservative: ProClin

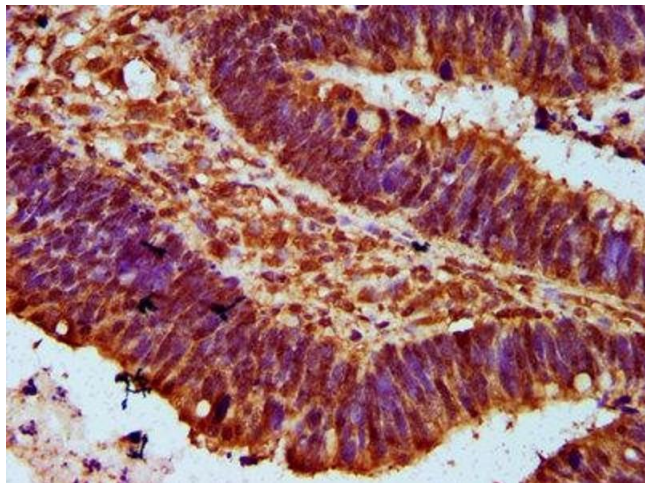
Precaution of Use: This product contains ProClin: a POISONOUS AND HAZARDOUS SUBSTANCE which should be handled by trained staff only.

Handling

Storage: -20 °C, -80 °C

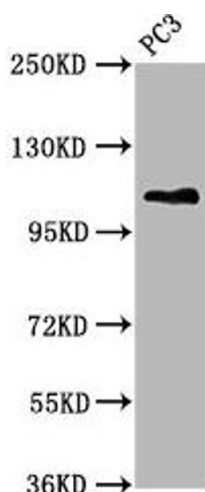
Storage Comment: Upon receipt, store at -20°C or -80°C. Avoid repeated freeze.

Images



Immunohistochemistry

Image 1. IHC image of ABIN7152566 diluted at 1:300 and staining in paraffin-embedded human ovarian cancer performed on a Leica Bond™ system. After dewaxing and hydration, antigen retrieval was mediated by high pressure in a citrate buffer (pH 6.0). Section was blocked with 10 % normal goat serum 30 min at RT. Then primary antibody (1 % BSA) was incubated at 4 °C overnight. The primary is detected by a biotinylated secondary antibody and visualized using an HRP conjugated SP system.



Western Blotting

Image 2. Western Blot Positive WB detected in: PC-3 whole cell lysate All lanes: FAN1 antibody at 5.3 µg/mL Secondary Goat polyclonal to rabbit IgG at 1/50000 dilution Predicted band size: 115, 60 kDa Observed band size: 115 kDa