

Datasheet for ABIN7152658  
**anti-FCRL3 antibody (AA 122-222)**[Go to Product page](#)

## 2 Images

## Overview

Quantity:	100 µg
Target:	FCRL3
Binding Specificity:	AA 122-222
Reactivity:	Human
Host:	Rabbit
Clonality:	Polyclonal
Conjugate:	This FCRL3 antibody is un-conjugated
Application:	Immunohistochemistry (IHC), ELISA, Immunofluorescence (IF)

## Product Details

Immunogen:	Recombinant Human Fc receptor-like protein 3 protein (122-222AA)
Isotype:	IgG
Cross-Reactivity:	Human
Purification:	>95%, Protein G purified

## Target Details

Target:	FCRL3
Alternative Name:	FCRL3 ( <a href="#">FCRL3 Products</a> )
Background:	Background: Promotes TLR9-induced B-cell proliferation, activation and survival but inhibits antibody production and suppresses plasma cell differentiation. Enhances activation of NF-

## Target Details

kappa-B and MAPK signaling pathways in TLR9 stimulated B-cells (PubMed:23857366). Has inhibitory potential on B-cell receptor (BCR)-mediated signaling, possibly through association with SH2 domain-containing phosphatases. Inhibits cell tyrosine phosphorylation, calcium mobilization and activation-induced cell death induced through BCR signaling (PubMed:19843936). Regulatory T-cells expressing FCRL3 exhibit a memory phenotype, are relatively nonresponsive to antigenic stimulation in presence of IL2 and have reduced capacity to suppress the proliferation of effector T-cells (PubMed:20190142, PubMed:19494275).  
Aliases: CD307c antibody, Fc receptor homolog 3 antibody, Fc receptor-like protein 3 antibody, FcR-like protein 3 antibody, FcRH3 antibody, FcRL3 antibody, FCRL3\_HUMAN antibody, hIFGP3 antibody, IFGP family protein 3 antibody, IFGP3 antibody, Immune receptor translocation-associated protein 3 antibody, Immunoglobulin superfamily receptor translocation associated protein 3 antibody, IRTA3 antibody, SH2 domain-containing phosphatase anchor protein 2 antibody, SPAP2 antibody

UniProt: [Q96P31](#)

## Application Details

Application Notes: Recommended dilution: IHC:1:20-1:200, IF:1:20-1:200,

Restrictions: For Research Use only

## Handling

Format: Liquid

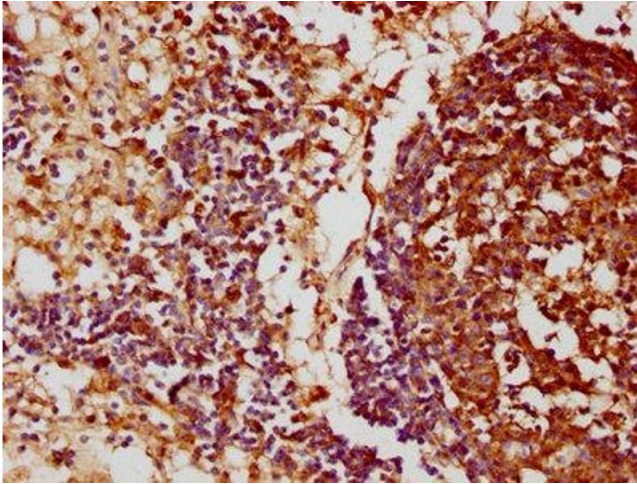
Buffer: Preservative: 0.03 % Proclin 300  
Constituents: 50 % Glycerol, 0.01M PBS, pH 7.4

Preservative: ProClin

Precaution of Use: This product contains ProClin: a POISONOUS AND HAZARDOUS SUBSTANCE which should be handled by trained staff only.

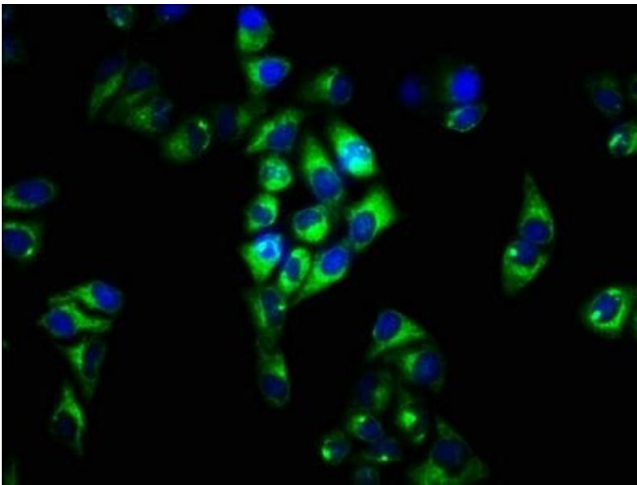
Storage: -20 °C, -80 °C

Storage Comment: Upon receipt, store at -20°C or -80°C. Avoid repeated freeze.



#### Immunohistochemistry

**Image 1.** IHC image of ABIN7152658 diluted at 1:100 and staining in paraffin-embedded human lymph node tissue performed on a Leica Bond™ system. After dewaxing and hydration, antigen retrieval was mediated by high pressure in a citrate buffer (pH 6.0). Section was blocked with 10% normal goat serum 30min at RT. Then primary antibody (1% BSA) was incubated at 4°C overnight. The primary is detected by a biotinylated secondary antibody and visualized using an HRP conjugated SP system.



#### Immunofluorescence

**Image 2.** Immunofluorescence staining of HeLa cells with ABIN7152658 at 1:33, counter-stained with DAPI. The cells were fixed in 4% formaldehyde, permeabilized using 0.2% Triton X-100 and blocked in 10% normal Goat Serum. The cells were then incubated with the antibody overnight at 4°C. The secondary antibody was Alexa Fluor 488-conjugated AffiniPure Goat Anti-Rabbit IgG(H+L).