

Datasheet for ABIN7152671
anti-FCRL6 antibody (AA 20-307)



[Go to Product page](#)

3 Images

Overview

Quantity:	100 µL
Target:	FCRL6
Binding Specificity:	AA 20-307
Reactivity:	Human
Host:	Rabbit
Clonality:	Polyclonal
Conjugate:	This FCRL6 antibody is un-conjugated
Application:	ELISA, Immunohistochemistry (IHC), Western Blotting (WB)

Product Details

Immunogen:	Recombinant Human Fc receptor-like protein 6 protein (20-307AA)
Isotype:	IgG
Cross-Reactivity:	Human
Purification:	Antigen Affinity Purified

Target Details

Target:	FCRL6
Alternative Name:	FCRL6 (FCRL6 Products)
Background:	Background: external side of plasma membrane Aliases: Fc receptor homolog 6 antibody, Fc receptor-like 6 antibody, Fc receptor-like protein 6

Target Details

antibody, Fc receptor-like protein 7 antibody, FcR-like protein 6 antibody, FcRH6 antibody, FcRL6 antibody, FCRL6_HUMAN antibody, FLJ16056 antibody, IFGP6 antibody, IgSF type I transmembrane receptor antibody, leukocyte receptor antibody

UniProt: [Q6DN72](#)

Application Details

Application Notes: Recommended dilution: WB:1:1000-1:5000, IHC:1:20-1:200,

Restrictions: For Research Use only

Handling

Format: Liquid

Buffer: PBS with 0.02 % sodium azide, 50 % glycerol, pH 7.3.

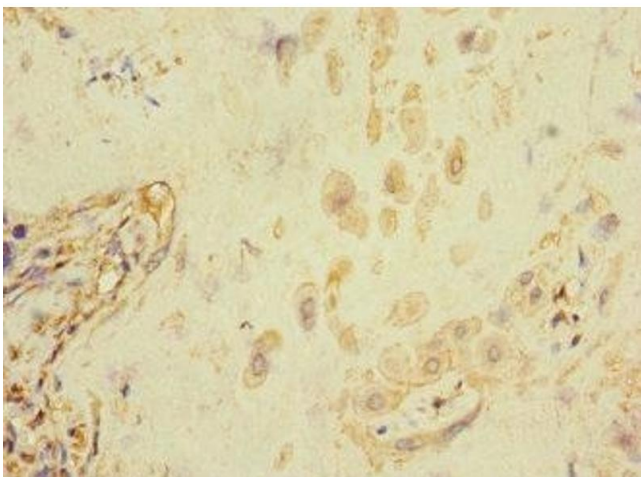
Preservative: Sodium azide

Precaution of Use: This product contains Sodium azide: a POISONOUS AND HAZARDOUS SUBSTANCE which should be handled by trained staff only.

Storage: -20 °C,-80 °C

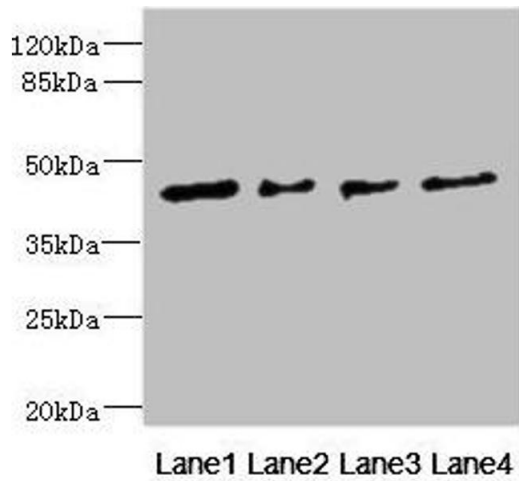
Storage Comment: Upon receipt, store at -20°C or -80°C. Avoid repeated freeze.

Images



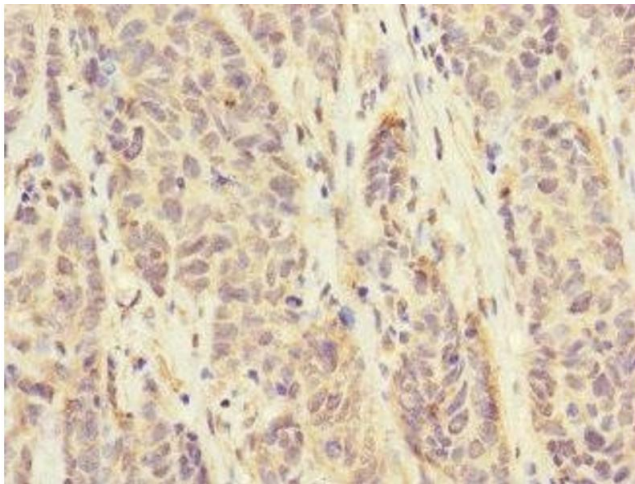
Immunohistochemistry

Image 1. Immunohistochemistry of paraffin-embedded human placenta tissue using ABIN7152671 at dilution of 1:100



Western Blotting

Image 2. Western blot All lanes: FCRL6 antibody at 1.29 μ g/mL Lane 1: HeLa whole cell lysate Lane 2: A549 whole cell lysate Lane 3: Jurkat whole cell lysate Lane 4: HepG2 whole cell lysate Secondary Goat polyclonal to rabbit IgG at 1/10000 dilution Predicted band size: 48, 46, 44, 35 kDa Observed band size: 48 kDa



Immunohistochemistry

Image 3. Immunohistochemistry of paraffin-embedded human ovarian cancer using ABIN7152671 at dilution of 1:100