

Datasheet for ABIN7152698
anti-FERMT1 antibody (AA 321-420)[Go to Product page](#)

2 Images

Overview

Quantity:	100 µg
Target:	FERMT1
Binding Specificity:	AA 321-420
Reactivity:	Human
Host:	Rabbit
Clonality:	Polyclonal
Conjugate:	This FERMT1 antibody is un-conjugated
Application:	ELISA, Immunohistochemistry (IHC), Immunofluorescence (IF)

Product Details

Immunogen:	Recombinant Human Fermitin family homolog 1 protein (321-420AA)
Isotype:	IgG
Cross-Reactivity:	Human
Purification:	>95%, Protein G purified

Target Details

Target:	FERMT1
Alternative Name:	FERMT1 (FERMT1 Products)
Background:	Background: Involved in cell adhesion. Contributes to integrin activation. When coexpressed with talin, potentiates activation of ITGA2B. Required for normal keratinocyte proliferation.

Target Details

Required for normal polarization of basal keratinocytes in skin, and for normal cell shape.
Required for normal adhesion of keratinocytes to fibronectin and laminin, and for normal keratinocyte migration to wound sites. May mediate TGF-beta 1 signaling in tumor progression.
Aliases: C20orf42 antibody, Chromosome 20 open reading frame 42 antibody, DTGCU 2 antibody, DTGCU2 antibody, FERM1_HUMAN antibody, Fermitin family homolog 1 antibody, Fermitin family member 1 antibody, Fermt1 antibody, FLJ20116 antibody, FLJ23423 antibody, KIND 1 antibody, KIND1 antibody, Kinderlin antibody, Kindlerin antibody, Kindlin 1 antibody, Kindlin syndrome protein antibody, Kindlin-1 antibody, Kindlin1 antibody, Unc 112 related protein 1 antibody, Unc-112-related protein 1 antibody, Unc112 related protein antibody, UNC112A antibody, URP 1 antibody, URP1 antibody

UniProt: [Q9BQL6](#)

Application Details

Application Notes: Recommended dilution: IHC:1:500-1:1000, IF:1:200-1:500,

Restrictions: For Research Use only

Handling

Format: Liquid

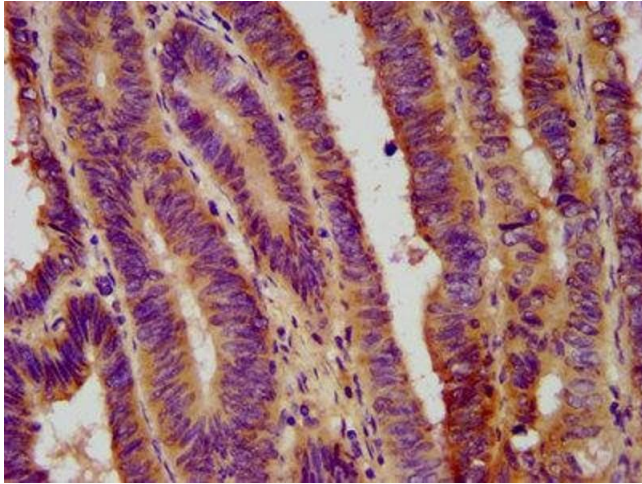
Buffer: Preservative: 0.03 % Proclin 300
Constituents: 50 % Glycerol, 0.01M PBS, pH 7.4

Preservative: ProClin

Precaution of Use: This product contains ProClin: a POISONOUS AND HAZARDOUS SUBSTANCE which should be handled by trained staff only.

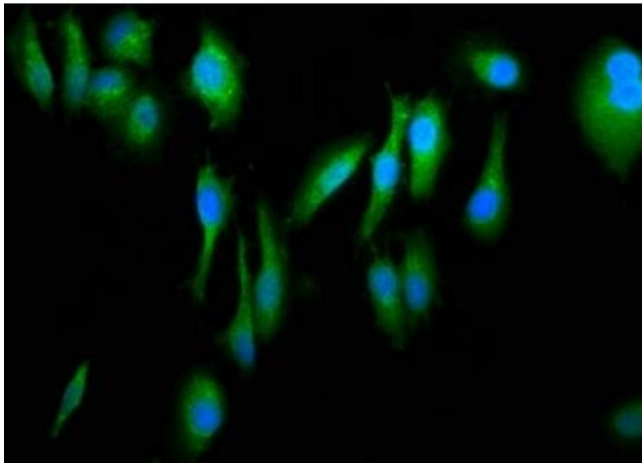
Storage: -20 °C,-80 °C

Storage Comment: Upon receipt, store at -20°C or -80°C. Avoid repeated freeze.



Immunohistochemistry

Image 1. IHC image of ABIN7152698 diluted at 1:800 and staining in paraffin-embedded human colon cancer performed on a Leica Bond™ system. After dewaxing and hydration, antigen retrieval was mediated by high pressure in a citrate buffer (pH 6.0). Section was blocked with 10% normal goat serum 30min at RT. Then primary antibody (1% BSA) was incubated at 4°C overnight. The primary is detected by a biotinylated secondary antibody and visualized using an HRP conjugated SP system.



Immunofluorescence

Image 2. Immunofluorescence staining of HeLa cells with ABIN7152698 at 1:266, counter-stained with DAPI. The cells were fixed in 4% formaldehyde, permeabilized using 0.2% Triton X-100 and blocked in 10% normal Goat Serum. The cells were then incubated with the antibody overnight at 4°C. The secondary antibody was Alexa Fluor 488-conjugated AffiniPure Goat Anti-Rabbit IgG(H+L).