



[Go to Product page](#)

Datasheet for ABIN7152743  
**anti-FGGY antibody (AA 1-244)**

1 Image

Overview

Quantity:	100 µL
Target:	FGGY
Binding Specificity:	AA 1-244
Reactivity:	Human
Host:	Rabbit
Clonality:	Polyclonal
Conjugate:	This FGGY antibody is un-conjugated
Application:	ELISA, Immunohistochemistry (IHC)

Product Details

Immunogen:	Recombinant Human FGGY carbohydrate kinase domain-containing protein (1-244AA)
Isotype:	IgG
Cross-Reactivity:	Human
Purification:	>95%, Antigen Affinity purified & Affinity purified

Target Details

Target:	FGGY
Alternative Name:	FGGY ( <a href="#">FGGY Products</a> )
Background:	Background: D-ribulokinase activity, neuron cellular homeostasis, pentose metabolic process Aliases: FGGYFGGY carbohydrate kinase domain-containing protein antibody, EC 2.7.1.-

## Target Details

antibody

UniProt: [Q96C11](#)

## Application Details

Application Notes: Recommended dilution: IHC:1:20-1:200,

Restrictions: For Research Use only

## Handling

Format: Liquid

Buffer: Preservative: 0.03 % Proclin 300  
Constituents: 50 % Glycerol, 0.01M PBS, pH 7.4

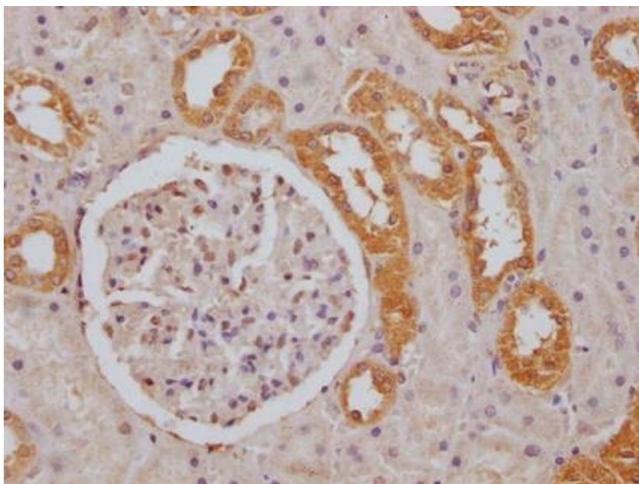
Preservative: ProClin

Precaution of Use: This product contains ProClin: a POISONOUS AND HAZARDOUS SUBSTANCE which should be handled by trained staff only.

Storage: -20 °C,-80 °C

Storage Comment: Upon receipt, store at -20°C or -80°C. Avoid repeated freeze.

## Images



### Immunohistochemistry

**Image 1.** IHC image of ABIN7152743 diluted at 1:100 and staining in paraffin-embedded human kidney tissue performed on a Leica Bond™ system. After dewaxing and hydration, antigen retrieval was mediated by high pressure in a citrate buffer (pH 6.0). Section was blocked with 10 % normal goat serum 30 min at RT. Then primary antibody (1 % BSA) was incubated at 4 °C overnight. The primary is detected by a Goat anti-rabbit IgG labeled by HRP and visualized using 0.05 % DAB.