



[Go to Product page](#)

Datasheet for ABIN7152747  
**anti-FHOD1 antibody (AA 338-437)**

1 Image

### Overview

Quantity:	100 µg
Target:	FHOD1
Binding Specificity:	AA 338-437
Reactivity:	Human
Host:	Rabbit
Clonality:	Polyclonal
Conjugate:	This FHOD1 antibody is un-conjugated
Application:	ELISA, Immunohistochemistry (IHC)

### Product Details

Immunogen:	Recombinant Human FH1/FH2 domain-containing protein 1 protein (338-437AA)
Isotype:	IgG
Cross-Reactivity:	Human
Purification:	>95%, Protein G purified

### Target Details

Target:	FHOD1
Alternative Name:	FHOD1 ( <a href="#">FHOD1 Products</a> )
Background:	Background: Required for the assembly of F-actin structures, such as stress fibers. Depends on the Rho-ROCK cascade for its activity. Contributes to the coordination of microtubules with

## Target Details

---

actin fibers and plays a role in cell elongation. Acts synergistically with ROCK1 to promote SRC-dependent non-apoptotic plasma membrane blebbing.

Aliases: FH1/FH2 domain containing protein antibody, FH1/FH2 domain containing protein 1 antibody, FH1/FH2 domain-containing protein 1 antibody, Fhod1 antibody, FHOD1\_HUMAN antibody, FHOS antibody, FHOS1 antibody, Formin homolog overexpressed in spleen 1 antibody, Formin homology 2 domain containing 1 antibody, Formin homology 2 domain containing protein 1 antibody, Formin homology 2 domain-containing protein 1 antibody

---

UniProt: [Q9Y613](#)

## Application Details

---

Application Notes: Recommended dilution: IHC:1:200-1:500,

Restrictions: For Research Use only

## Handling

---

Format: Liquid

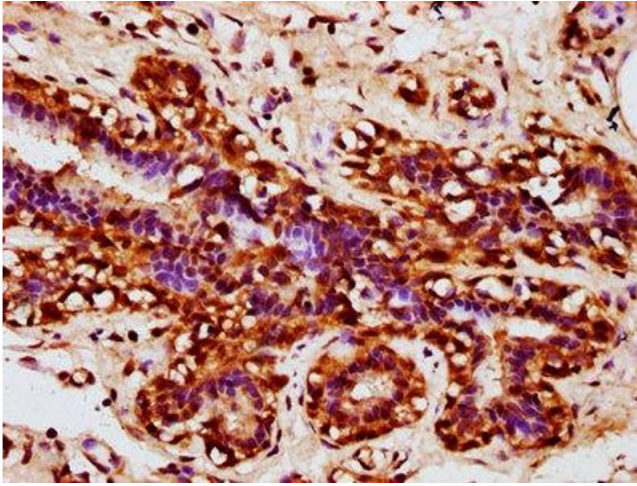
Buffer: Preservative: 0.03 % Proclin 300  
Constituents: 50 % Glycerol, 0.01M PBS, pH 7.4

Preservative: ProClin

Precaution of Use: This product contains ProClin: a POISONOUS AND HAZARDOUS SUBSTANCE which should be handled by trained staff only.

Storage: -20 °C,-80 °C

Storage Comment: Upon receipt, store at -20°C or -80°C. Avoid repeated freeze.



### Immunohistochemistry

**Image 1.** IHC image of ABIN7152747 diluted at 1:300 and staining in paraffin-embedded human breast cancer performed on a Leica Bond™ system. After dewaxing and hydration, antigen retrieval was mediated by high pressure in a citrate buffer (pH 6.0). Section was blocked with 10 % normal goat serum 30 min at RT. Then primary antibody (1 % BSA) was incubated at 4 °C overnight. The primary is detected by a biotinylated secondary antibody and visualized using an HRP conjugated SP system.