

Datasheet for ABIN7152767
anti-FGL1 antibody (AA 179-282)[Go to Product page](#)

2 Images

Overview

Quantity:	100 µg
Target:	FGL1
Binding Specificity:	AA 179-282
Reactivity:	Human
Host:	Rabbit
Clonality:	Polyclonal
Conjugate:	This FGL1 antibody is un-conjugated
Application:	Western Blotting (WB), Immunohistochemistry (IHC), ELISA

Product Details

Immunogen:	Recombinant Human Fibrinogen-like protein 1 protein (179-282AA)
Isotype:	IgG
Cross-Reactivity:	Human
Purification:	>95%, Protein G purified

Target Details

Target:	FGL1
Alternative Name:	FGL1 (FGL1 Products)
Background:	Background: Has hepatocyte mitogenic activity. Aliases: FGL 1 antibody, Fgl1 antibody, FGL1_HUMAN antibody, Fibrinogen like 1 antibody,

Target Details

Fibrinogen like protein 1 antibody, Fibrinogen related protein 1 antibody, Fibrinogen-like protein 1 antibody, Hepassocin antibody, Hepatocellular carcinoma related sequence antibody, Hepatocyte derived fibrinogen related protein 1 antibody, Hepatocyte-derived fibrinogen-related protein 1 antibody, HFREP 1 antibody, HFREP-1 antibody, HFREP1 antibody, HP 041 antibody, HP-041 antibody, HP041 antibody, LFIRE 1 antibody, LFIRE-1 antibody, LFIRE1 antibody, Liver fibrinogen related protein 1 antibody, Liver fibrinogen-related protein 1 antibody, MFIRE 1 antibody, MGC108569 antibody, MGC12455 antibody, MGC37822 antibody, OTTHUMP00000122468 antibody

UniProt: [Q08830](#)

Application Details

Application Notes: Recommended dilution: WB:1:500-1:5000, IHC:1:200-1:500,

Restrictions: For Research Use only

Handling

Format: Liquid

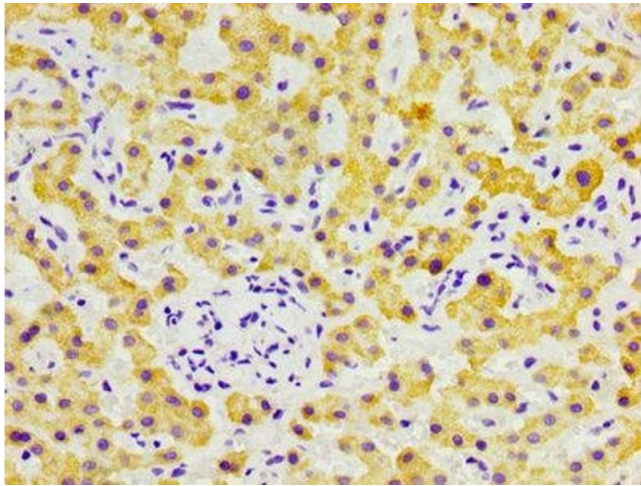
Buffer: Preservative: 0.03 % Proclin 300
Constituents: 50 % Glycerol, 0.01M PBS, pH 7.4

Preservative: ProClin

Precaution of Use: This product contains ProClin: a POISONOUS AND HAZARDOUS SUBSTANCE which should be handled by trained staff only.

Storage: -20 °C, -80 °C

Storage Comment: Upon receipt, store at -20°C or -80°C. Avoid repeated freeze.



Immunohistochemistry

Image 1. IHC image of ABIN7152767 diluted at 1:300 and staining in paraffin-embedded human liver cancer performed on a Leica Bond™ system. After dewaxing and hydration, antigen retrieval was mediated by high pressure in a citrate buffer (pH 6.0). Section was blocked with 10% normal goat serum 30min at RT. Then primary antibody (1% BSA) was incubated at 4°C overnight. The primary is detected by a biotinylated secondary antibody and visualized using an HRP conjugated SP system.

Western Blotting

Image 2. Western Blot Positive WB detected in: K562 whole cell lysate All lanes: FGL1 antibody at 5.8 µg/mL Secondary Goat polyclonal to rabbit IgG at 1/50000 dilution Predicted band size: 37 kDa Observed band size: 37 kDa

