

Datasheet for ABIN7152772  
**anti-FGF1 antibody (AA 16-155)**

## 5 Images

[Go to Product page](#)

## Overview

Quantity:	100 µL
Target:	FGF1
Binding Specificity:	AA 16-155
Reactivity:	Human
Host:	Rabbit
Clonality:	Polyclonal
Conjugate:	This FGF1 antibody is un-conjugated
Application:	Western Blotting (WB), Immunohistochemistry (IHC), ELISA, Immunofluorescence (IF)

## Product Details

Immunogen:	Recombinant Human Fibroblast growth factor 1 protein (16-155AA)
Isotype:	IgG
Cross-Reactivity:	Human, Mouse
Purification:	Antigen Affinity Purified

## Target Details

Target:	FGF1
Alternative Name:	FGF1 ( <a href="#">FGF1 Products</a> )
Background:	Background: Plays an important role in the regulation of cell survival, cell division, angiogenesis, cell differentiation and cell migration. Functions as potent mitogen in vitro.

## Target Details

Aliases: Acidic fibroblast growth factor antibody, aFGF antibody, Beta endothelial cell growth factor antibody, Beta-endothelial cell growth factor antibody, ECGF antibody, ECGF beta antibody, ECGF-beta antibody, ECGFA antibody, ECGFB antibody, Endothelial Cell Growth Factor alpha antibody, Endothelial Cell Growth Factor beta antibody, FGF 1 antibody, FGF alpha antibody, Fgf1 antibody, FGF1\_HUMAN antibody, FGFA antibody, Fibroblast Growth Factor 1 Acidic antibody, Fibroblast growth factor 1 antibody, GLI0703 antibody, HBGF 1 antibody, HBGF-1 antibody, HBGF1 antibody, Heparin binding growth factor 1 antibody, Heparin binding growth factor 1 precursor antibody, Heparin-binding growth factor 1 antibody

UniProt: [P05230](#)

Pathways: [RTK Signaling](#), [Fc-epsilon Receptor Signaling Pathway](#), [EGFR Signaling Pathway](#), [Neurotrophin Signaling Pathway](#)

## Application Details

Application Notes: Recommended dilution: WB:1:200-1:1000, IHC:1:20-1:500, IF:1:50-1:200,

Restrictions: For Research Use only

## Handling

Format: Liquid

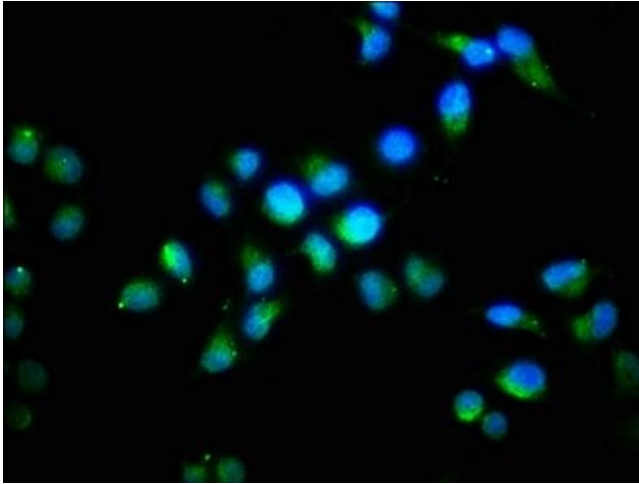
Buffer: PBS with 0.02 % sodium azide, 50 % glycerol, pH 7.3.

Preservative: Sodium azide

Precaution of Use: This product contains Sodium azide: a POISONOUS AND HAZARDOUS SUBSTANCE which should be handled by trained staff only.

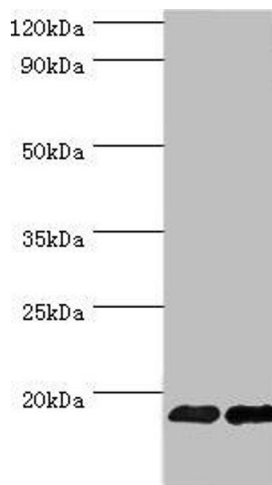
Storage: -20 °C, -80 °C

Storage Comment: Upon receipt, store at -20°C or -80°C. Avoid repeated freeze.



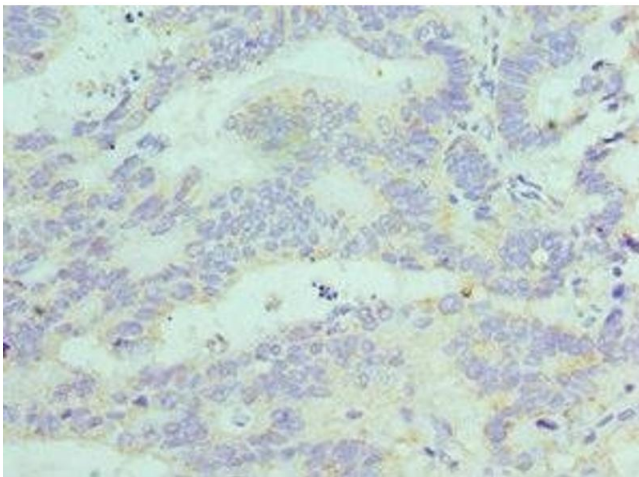
#### Immunofluorescence

**Image 1.** Immunofluorescence staining of HeLa cells with ABIN7152772 at 1:96, counter-stained with DAPI. The cells were fixed in 4 % formaldehyde, permeabilized using 0.2 % Triton X-100 and blocked in 10 % normal Goat Serum. The cells were then incubated with the antibody overnight at 4 °C. The secondary antibody was Alexa Fluor 488-conjugated AffiniPure Goat Anti-Rabbit IgG(H+L).



#### Western Blotting

**Image 2.** Western blot All lanes: Fibroblast growth factor 1 antibody at 6 µg/mL Lane 1: Mouse kidney tissue Lane 2: Mouse heart tissue Secondary Goat polyclonal to rabbit IgG at 1/10000 dilution Predicted band size: 18, 7 kDa Observed band size: 18 kDa



#### Immunohistochemistry

**Image 3.** Immunohistochemistry of paraffin-embedded human colon cancer using ABIN7152772 at dilution of 1:100

Please check the [product details page](#) for more images. Overall 5 images are available for ABIN7152772.