



[Go to Product page](#)

Datasheet for ABIN7152845
anti-FRS2 antibody (AA 116-387)

1 Image

Overview

Quantity:	100 µg
Target:	FRS2
Binding Specificity:	AA 116-387
Reactivity:	Human
Host:	Rabbit
Clonality:	Polyclonal
Conjugate:	This FRS2 antibody is un-conjugated
Application:	ELISA, Immunohistochemistry (IHC)

Product Details

Immunogen:	Recombinant Human Fibroblast growth factor receptor substrate 2 protein (116-387AA)
Isotype:	IgG
Cross-Reactivity:	Human
Purification:	>95%, Protein G purified

Target Details

Target:	FRS2
Alternative Name:	FRS2 (FRS2 Products)
Background:	Background: Adapter protein that links activated FGR and NGF receptors to downstream signaling pathways. Plays an important role in the activation of MAP kinases and in the

Target Details

phosphorylation of PIK3R1, the regulatory subunit of phosphatidylinositol 3-kinase, in response to ligand-mediated activation of FGFR1. Modulates signaling via SHC1 by competing for a common binding site on NTRK1.

Aliases: FGFR signaling adaptor SNT antibody, FGFR signalling adaptor antibody, FGFR substrate 2 antibody, FGFR-signaling adaptor SNT antibody, Fibroblast growth factor receptor substrate 2 antibody, FRS 2 antibody, FRS2 antibody, FRS2_HUMAN antibody, FRS2A antibody, FRS2alpha antibody, SNT 1 antibody, SNT antibody, SNT-1 antibody, SNT1 antibody, Suc 1 Associated Neurotrophic Factor Target antibody, Suc1 associated neurotrophic factor target 1 antibody, Suc1-associated neurotrophic factor target 1 antibody

UniProt: [Q8WU20](#)

Pathways: [Fc-epsilon Receptor Signaling Pathway](#), [EGFR Signaling Pathway](#), [Neurotrophin Signaling Pathway](#), [Signaling Events mediated by VEGFR1 and VEGFR2](#)

Application Details

Application Notes: Recommended dilution: IHC:1:20-1:200,

Restrictions: For Research Use only

Handling

Format: Liquid

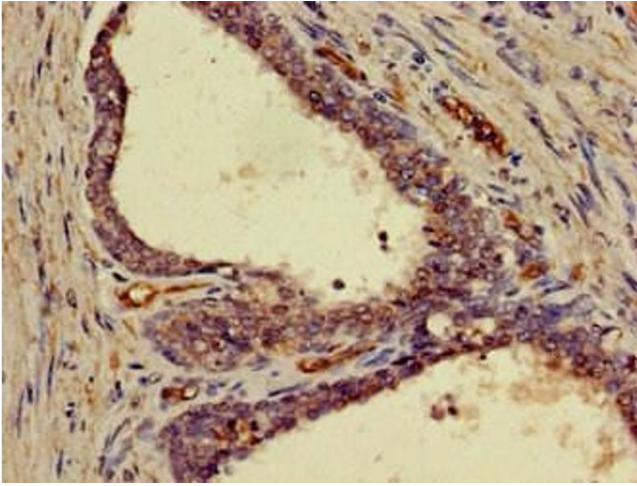
Buffer: Preservative: 0.03 % Proclin 300
Constituents: 50 % Glycerol, 0.01M PBS, pH 7.4

Preservative: ProClin

Precaution of Use: This product contains ProClin: a POISONOUS AND HAZARDOUS SUBSTANCE which should be handled by trained staff only.

Storage: -20 °C,-80 °C

Storage Comment: Upon receipt, store at -20°C or -80°C. Avoid repeated freeze.



Immunohistochemistry

Image 1. Immunohistochemistry of paraffin-embedded human prostate cancer using ABIN7152845 at dilution of 1:100