

Datasheet for ABIN7152849
anti-FRS3 antibody (AA 101-400)

3 Images

[Go to Product page](#)

Overview

Quantity:	100 µg
Target:	FRS3
Binding Specificity:	AA 101-400
Reactivity:	Human
Host:	Rabbit
Clonality:	Polyclonal
Conjugate:	This FRS3 antibody is un-conjugated
Application:	ELISA, Immunofluorescence (IF), Immunohistochemistry (IHC)

Product Details

Immunogen:	Recombinant Human Fibroblast growth factor receptor substrate 3 protein (101-400AA)
Isotype:	IgG
Cross-Reactivity:	Human
Purification:	>95%, Protein G purified

Target Details

Target:	FRS3
Alternative Name:	FRS3 (FRS3 Products)
Background:	Background: Adapter protein that links FGF and NGF receptors to downstream signaling pathways. Involved in the activation of MAP kinases. Down-regulates ERK2 signaling by

Target Details

interfering with the phosphorylation and nuclear translocation of ERK2.

Aliases: FRS3Fibroblast growth factor receptor substrate 3 antibody, FGFR substrate 3 antibody, FGFR-signaling adaptor SNT2 antibody, Suc1-associated neurotrophic factor target 2 antibody, SNT-2 antibody

UniProt: [O43559](#)

Application Details

Application Notes: Recommended dilution: IHC:1:20-1:200, IF:1:200-1:500,

Restrictions: For Research Use only

Handling

Format: Liquid

Buffer: Preservative: 0.03 % Proclin 300
Constituents: 50 % Glycerol, 0.01M PBS, PH 7.4

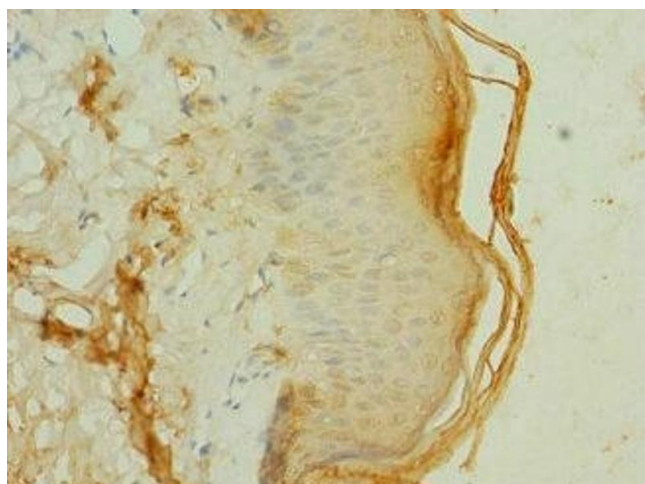
Preservative: ProClin

Precaution of Use: This product contains ProClin: a POISONOUS AND HAZARDOUS SUBSTANCE which should be handled by trained staff only.

Storage: -20 °C,-80 °C

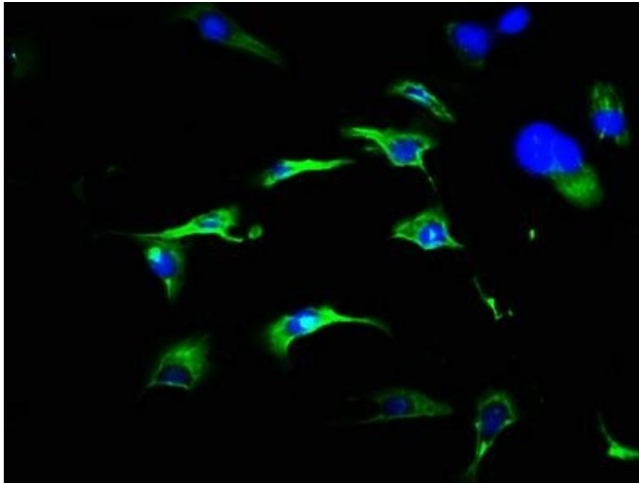
Storage Comment: Upon receipt, store at -20°C or -80°C. Avoid repeated freeze.

Images



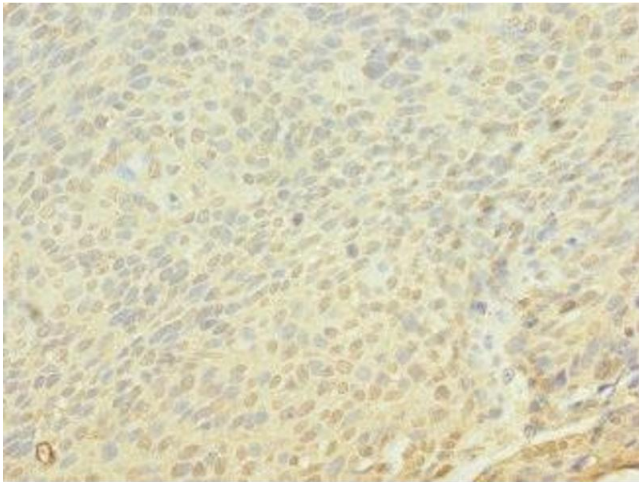
Immunohistochemistry

Image 1. Immunohistochemistry of paraffin-embedded human skin tissue using ABIN7152849 at dilution of 1:100



Immunofluorescence

Image 2. Immunofluorescence staining of U251 cells with ABIN7152849 at 1:466, counter-stained with DAPI. The cells were fixed in 4 % formaldehyde, permeabilized using 0.2 % Triton X-100 and blocked in 10 % normal Goat Serum. The cells were then incubated with the antibody overnight at 4 °C. The secondary antibody was Alexa Fluor 488-conjugated AffiniPure Goat Anti-Rabbit IgG(H+L).



Immunohistochemistry

Image 3. Immunohistochemistry of paraffin-embedded human cervical cancer using ABIN7152849 at dilution of 1:100