

Datasheet for ABIN7152853
anti-FGFR1 antibody (AA 403-470)

3 Images

[Go to Product page](#)

Overview

Quantity:	100 µg
Target:	FGFR1
Binding Specificity:	AA 403-470
Reactivity:	Human
Host:	Rabbit
Clonality:	Polyclonal
Conjugate:	This FGFR1 antibody is un-conjugated
Application:	Immunohistochemistry (IHC), ELISA, Immunofluorescence (IF)

Product Details

Immunogen:	Recombinant Human Fibroblast growth factor receptor-like 1 protein (403-470AA)
Isotype:	IgG
Cross-Reactivity:	Human
Purification:	>95%, Protein G purified

Target Details

Target:	FGFR1
Alternative Name:	FGFR1 (FGFR1 Products)
Background:	Background: Has a negative effect on cell proliferation. Aliases: FGF homologous factor receptor antibody, FGF receptor like protein 1 antibody, FGF

Target Details

receptor-like protein 1 antibody, FGFR 5 antibody, FGFR like protein antibody, FGFR-5 antibody, FGFR-like protein antibody, FGFR5 antibody, Fgfr1 antibody, FGRL1_HUMAN antibody, FHFR antibody, Fibroblast growth factor receptor 5 antibody, Fibroblast growth factor receptor like 1 antibody, Fibroblast growth factor receptor-like 1 antibody

UniProt: [Q8N441](#)

Pathways: [RTK Signaling](#)

Application Details

Application Notes: Recommended dilution: IHC:1:500-1:1000, IF:1:50-1:200,

Restrictions: For Research Use only

Handling

Format: Liquid

Buffer: Preservative: 0.03 % Proclin 300
Constituents: 50 % Glycerol, 0.01M PBS, pH 7.4

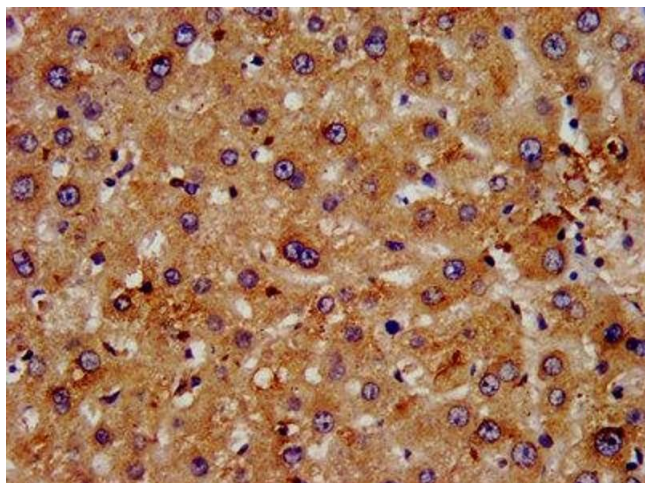
Preservative: ProClin

Precaution of Use: This product contains ProClin: a POISONOUS AND HAZARDOUS SUBSTANCE which should be handled by trained staff only.

Storage: -20 °C,-80 °C

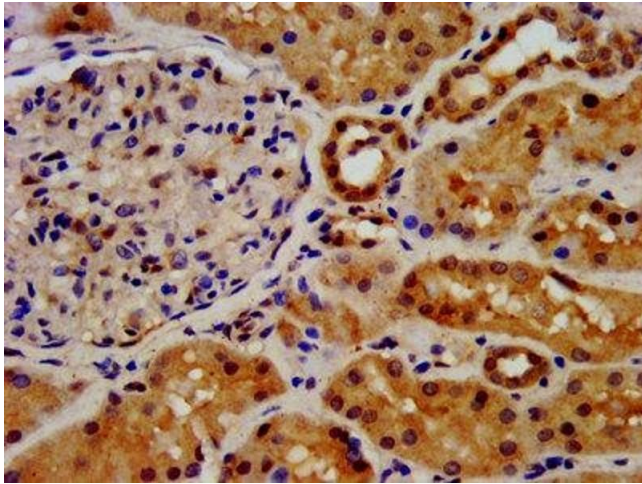
Storage Comment: Upon receipt, store at -20°C or -80°C. Avoid repeated freeze.

Images



Immunohistochemistry

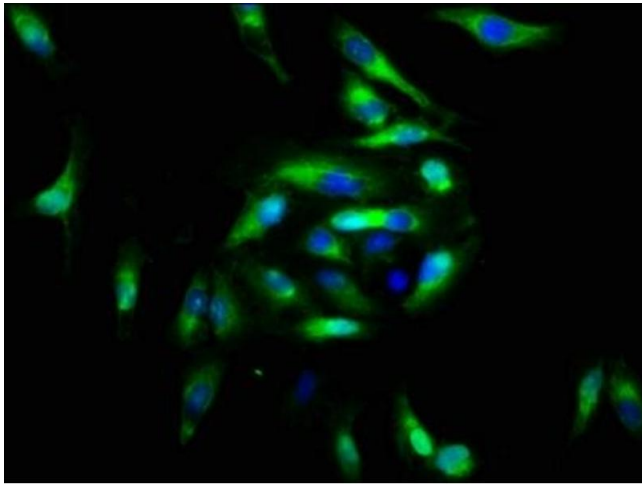
Image 1. IHC image of ABIN7152853 diluted at 1:500 and staining in paraffin-embedded human liver tissue performed on a Leica Bond™ system. After dewaxing and hydration, antigen retrieval was mediated by high pressure in a citrate buffer (pH 6.0). Section was blocked with 10% normal goat serum 30min at RT. Then primary antibody (1% BSA) was incubated at 4°C overnight. The primary is detected by a biotinylated secondary antibody and visualized using an



HRP conjugated SP system.

Immunohistochemistry

Image 2. IHC image of ABIN7152853 diluted at 1:500 and staining in paraffin-embedded human kidney tissue performed on a Leica Bond™ system. After dewaxing and hydration, antigen retrieval was mediated by high pressure in a citrate buffer (pH 6.0). Section was blocked with 10% normal goat serum 30min at RT. Then primary antibody (1% BSA) was incubated at 4°C overnight. The primary is detected by a biotinylated secondary antibody and visualized using an HRP conjugated SP system.



Immunofluorescence

Image 3. Immunofluorescence staining of HeLa cells with ABIN7152853 at 1:166, counter-stained with DAPI. The cells were fixed in 4% formaldehyde, permeabilized using 0.2% Triton X-100 and blocked in 10% normal Goat Serum. The cells were then incubated with the antibody overnight at 4°C. The secondary antibody was Alexa Fluor 488-conjugated AffiniPure Goat Anti-Rabbit IgG(H+L).