



Datasheet for ABIN7152863  
**anti-PKHD1 antibody (AA 520-743)**



[Go to Product page](#)

2 Images

Overview

Quantity:	100 µg
Target:	PKHD1
Binding Specificity:	AA 520-743
Reactivity:	Human
Host:	Rabbit
Clonality:	Polyclonal
Conjugate:	This PKHD1 antibody is un-conjugated
Application:	ELISA, Western Blotting (WB), Immunofluorescence (IF)

Product Details

Immunogen:	Recombinant Human Fibrocystin protein (520-743AA)
Isotype:	IgG
Cross-Reactivity:	Human
Purification:	>95%, Protein G purified

Target Details

Target:	PKHD1
Alternative Name:	PKHD1 ( <a href="#">PKHD1 Products</a> )
Background:	Background: May be required for correct bipolar cell division through the regulation of centrosome duplication and mitotic spindle assembly. May be a receptor protein that acts in

## Target Details

collecting-duct and biliary differentiation.

Aliases: ARPKD antibody, FCYT antibody, Fibrocystin antibody, FPC antibody, PKHD1 antibody, PKHD1\_HUMAN antibody, Polycystic kidney and hepatic disease 1 protein antibody, Polyductin antibody, TIGM1 antibody, Tigmin antibody

UniProt: [P08F94](#)

## Application Details

Application Notes: Recommended dilution: WB:1:500-1:5000, IF:1:50-1:200,

Restrictions: For Research Use only

## Handling

Format: Liquid

Buffer: Preservative: 0.03 % Proclin 300  
Constituents: 50 % Glycerol, 0.01M PBS, pH 7.4

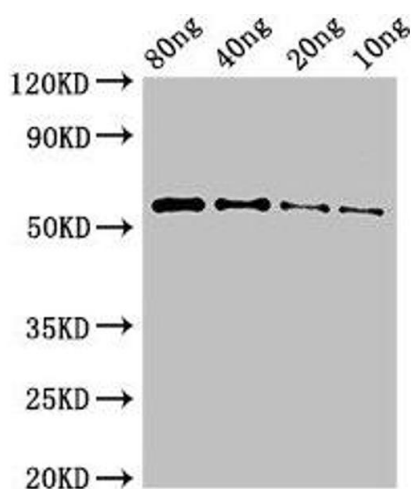
Preservative: ProClin

Precaution of Use: This product contains ProClin: a POISONOUS AND HAZARDOUS SUBSTANCE which should be handled by trained staff only.

Storage: -20 °C,-80 °C

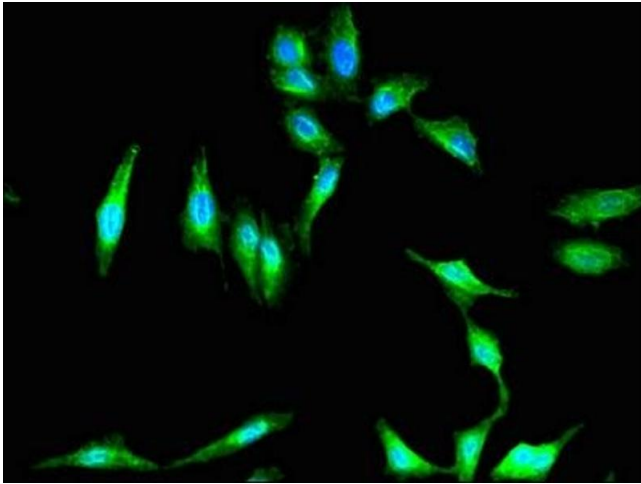
Storage Comment: Upon receipt, store at -20°C or -80°C. Avoid repeated freeze.

## Images



### Western Blotting

**Image 1.** Western Blot Positive WB detected in Recombinant protein All lanes: PKHD1 antibody at 3 µg/mL Secondary Goat polyclonal to rabbit IgG at 1/50000 dilution predicted band size: 55 kDa observed band size: 55 kDa



### Immunofluorescence

**Image 2.** Immunofluorescent analysis of HeLa cells using ABIN7152863 at dilution of 1:100 and Alexa Fluor 488-conjugated AffiniPure Goat Anti-Rabbit IgG(H+L)