

Datasheet for ABIN7152919
anti-FBLN2 antibody (AA 301-440)[Go to Product page](#)

3 Images

Overview

Quantity:	100 µg
Target:	FBLN2
Binding Specificity:	AA 301-440
Reactivity:	Human
Host:	Rabbit
Clonality:	Polyclonal
Conjugate:	This FBLN2 antibody is un-conjugated
Application:	Western Blotting (WB), ELISA, Immunohistochemistry (IHC)

Product Details

Immunogen:	Recombinant Human Fibulin-2 protein (301-440AA)
Isotype:	IgG
Cross-Reactivity:	Human
Purification:	>95%, Protein G purified

Target Details

Target:	FBLN2
Alternative Name:	FBLN2 (FBLN2 Products)
Background:	Background: Its binding to fibronectin and some other ligands is calcium dependent. May act as an adapter that mediates the interaction between FBN1 and ELN (PubMed:17255108).

Target Details

Aliases: Fbln2 antibody, FBLN2_HUMAN antibody, FIBL-2 antibody, Fibulin-2 antibody, OTTHUMP00000216670 antibody, OTTHUMP00000216671 antibody, OTTHUMP00000216672 antibody

UniProt: [P98095](#)

Application Details

Application Notes: Recommended dilution: WB:1:500-1:5000, IHC:1:500-1:1000,

Restrictions: For Research Use only

Handling

Format: Liquid

Buffer: Preservative: 0.03 % Proclin 300
Constituents: 50 % Glycerol, 0.01M PBS, pH 7.4

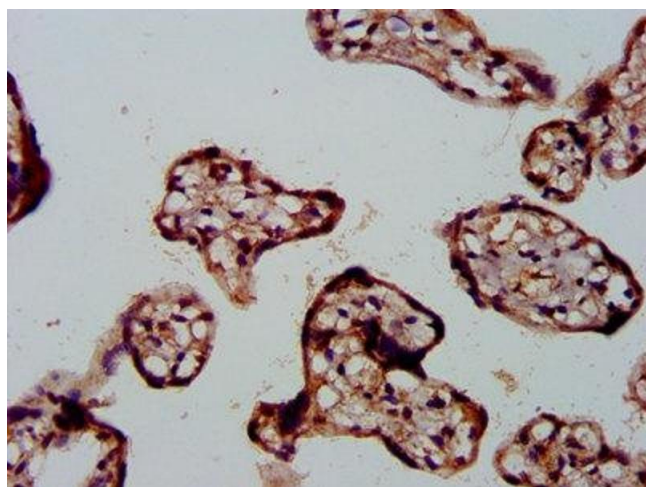
Preservative: ProClin

Precaution of Use: This product contains ProClin: a POISONOUS AND HAZARDOUS SUBSTANCE which should be handled by trained staff only.

Storage: -20 °C,-80 °C

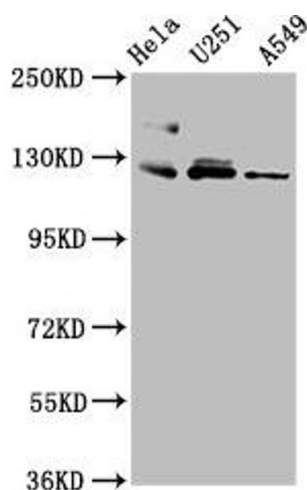
Storage Comment: Upon receipt, store at -20°C or -80°C. Avoid repeated freeze.

Images



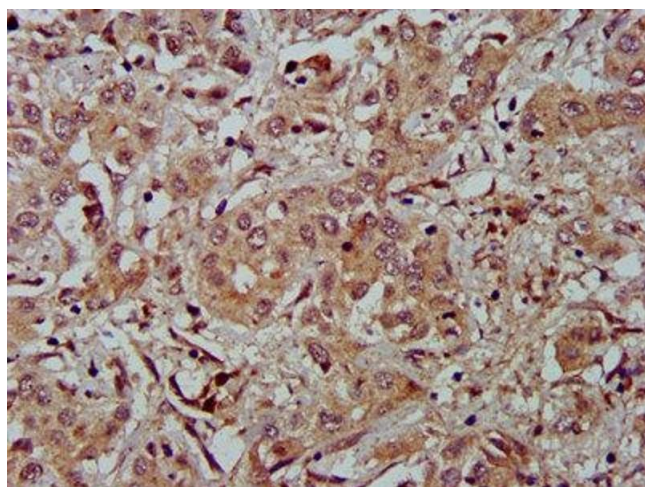
Immunohistochemistry

Image 1. IHC image of ABIN7152919 diluted at 1:500 and staining in paraffin-embedded human placenta tissue performed on a Leica Bond™ system. After dewaxing and hydration, antigen retrieval was mediated by high pressure in a citrate buffer (pH 6.0). Section was blocked with 10% normal goat serum 30min at RT. Then primary antibody (1% BSA) was incubated at 4°C overnight. The primary is detected by a biotinylated secondary antibody and visualized using an HRP conjugated SP system.



Western Blotting

Image 2. Western Blot Positive WB detected in: HeLa whole cell lysate, U251 whole cell lysate, A549 whole cell lysate All lanes: FBLN2 antibody at 3.4 µg/mL Secondary Goat polyclonal to rabbit IgG at 1/50000 dilution Predicted band size: 127, 132 kDa Observed band size: 127 kDa



Immunohistochemistry

Image 3. IHC image of ABIN7152919 diluted at 1:500 and staining in paraffin-embedded human liver cancer performed on a Leica Bond™ system. After dewaxing and hydration, antigen retrieval was mediated by high pressure in a citrate buffer (pH 6.0). Section was blocked with 10% normal goat serum 30min at RT. Then primary antibody (1% BSA) was incubated at 4°C overnight. The primary is detected by a biotinylated secondary antibody and visualized using an HRP conjugated SP system.