

Datasheet for ABIN7152932  
**anti-Fidgetin antibody (AA 132-371)**

## 3 Images

[Go to Product page](#)

## Overview

Quantity:	100 µg
Target:	Fidgetin (FIGN)
Binding Specificity:	AA 132-371
Reactivity:	Human
Host:	Rabbit
Clonality:	Polyclonal
Conjugate:	This Fidgetin antibody is un-conjugated
Application:	Western Blotting (WB), ELISA, Immunohistochemistry (IHC), Immunofluorescence (IF)

## Product Details

Immunogen:	Recombinant Human Fidgetin protein (132-371AA)
Isotype:	IgG
Cross-Reactivity:	Human, Mouse
Purification:	>95%, Protein G purified

## Target Details

Target:	Fidgetin (FIGN)
Alternative Name:	FIGN ( <a href="#">FIGN Products</a> )
Background:	Background: ATP-dependent microtubule severing protein. Severs microtubules along their length and depolymerizes their ends, primarily the minus-end, that may lead to the suppression

## Target Details

of microtubule growth from and attachment to centrosomes. Microtubule severing may promote rapid reorganization of cellular microtubule arrays and the release of microtubules from the centrosome following nucleation. Microtubule release from the mitotic spindle poles may allow depolymerization of the microtubule end proximal to the spindle pole, leading to poleward microtubule flux and poleward motion of chromosome.

Aliases: FIGNFidgetin antibody

UniProt: [Q5HY92](#)

## Application Details

Application Notes: Recommended dilution: WB:1:2000-1:5000, IHC:1:20-1:200, IF:1:50-1:200,

Restrictions: For Research Use only

## Handling

Format: Liquid

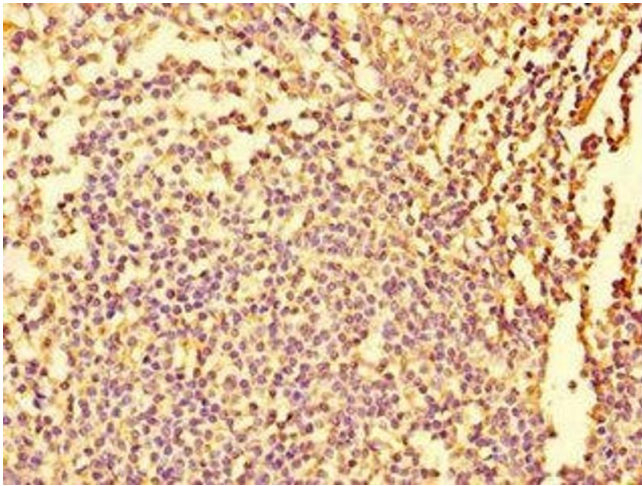
Buffer: Preservative: 0.03 % Proclin 300  
Constituents: 50 % Glycerol, 0.01M PBS, PH 7.4

Preservative: ProClin

Precaution of Use: This product contains ProClin: a POISONOUS AND HAZARDOUS SUBSTANCE which should be handled by trained staff only.

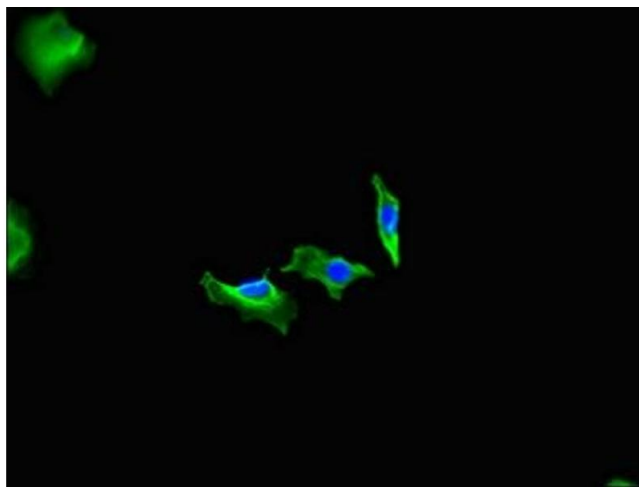
Storage: -20 °C,-80 °C

Storage Comment: Upon receipt, store at -20°C or -80°C. Avoid repeated freeze.



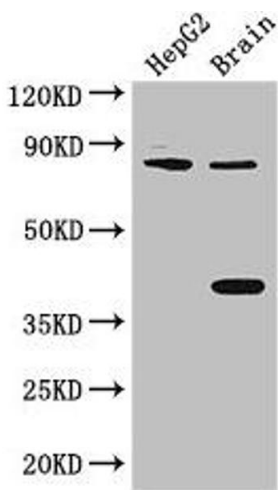
### Immunohistochemistry

**Image 1.** Immunohistochemistry of paraffin-embedded human tonsil tissue using ABIN7152932 at dilution of 1:100



### Immunofluorescence

**Image 2.** Immunofluorescent analysis of HeLa cells using ABIN7152932 at dilution of 1:100 and Alexa Fluor 488-conjugated AffiniPure Goat Anti-Rabbit IgG(H+L)



### Western Blotting

**Image 3.** Western Blot Positive WB detected in: HepG2 whole cell lysate, Mouse brain tissue All lanes: FIGN antibody at 3 µg/mL Secondary Goat polyclonal to rabbit IgG at 1/50000 dilution Predicted band size: 83 kDa Observed band size: 83, 38 kDa