



[Go to Product page](#)

Datasheet for ABIN7152940
anti-FIL1L antibody (AA 1-200)

3 Images

Overview

Quantity:	100 µg
Target:	FIL1L (FILIP1L)
Binding Specificity:	AA 1-200
Reactivity:	Human
Host:	Rabbit
Clonality:	Polyclonal
Conjugate:	This FIL1L antibody is un-conjugated
Application:	ELISA, Western Blotting (WB), Immunohistochemistry (IHC), Immunofluorescence (IF)

Product Details

Immunogen:	Recombinant Human Filamin A-interacting protein 1-like protein (1-200AA)
Isotype:	IgG
Cross-Reactivity:	Human, Mouse, Rat
Purification:	>95%, Protein G purified

Target Details

Target:	FIL1L (FILIP1L)
Alternative Name:	FILIP1L (FILIP1L Products)
Background:	Background: Acts as a regulator of the antiangiogenic activity on endothelial cells. When overexpressed in endothelial cells, leads to inhibition of cell proliferation and migration and an

Target Details

increase in apoptosis. Inhibits melanoma growth When expressed in tumor-associated vasculature.

Aliases: 130 kDa GPBP-interacting protein antibody, 90 kDa GPBP-interacting protein antibody, COL4A3BPIP antibody, DOC-1 antibody, DOC1 antibody, Downregulated in ovarian cancer 1 81 kDa isoform antibody, FIL1L_HUMAN antibody, Filamin A-interacting protein 1-like antibody, FILIP1L antibody, GIP130 antibody, GIP130a antibody, GIP130b antibody, GIP130c antibody, GIP90 antibody, GPBP interacting protein 90 antibody, Protein down-regulated in ovarian cancer 1 antibody

UniProt: [Q4L180](#)

Application Details

Application Notes: Recommended dilution: WB:1:500-1:5000, IHC:1:20-1:200, IF:1:50-1:200,

Restrictions: For Research Use only

Handling

Format: Liquid

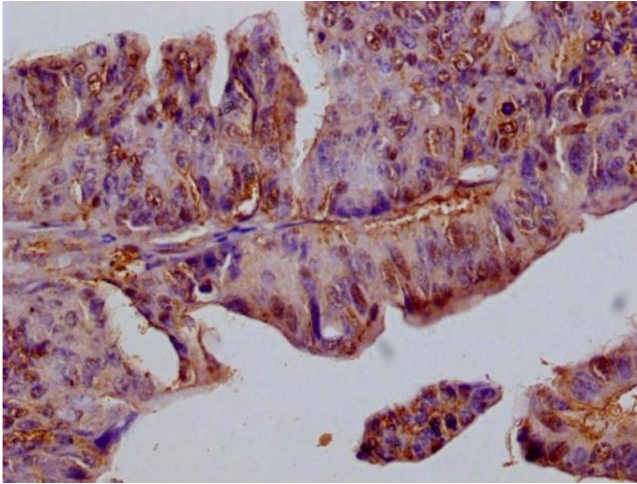
Buffer: Preservative: 0.03 % Proclin 300
Constituents: 50 % Glycerol, 0.01M PBS, PH 7.4

Preservative: ProClin

Precaution of Use: This product contains ProClin: a POISONOUS AND HAZARDOUS SUBSTANCE which should be handled by trained staff only.

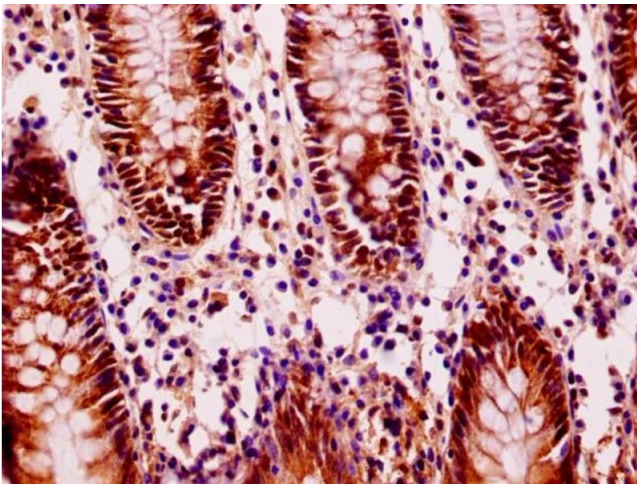
Storage: -20 °C,-80 °C

Storage Comment: Upon receipt, store at -20°C or -80°C. Avoid repeated freeze.



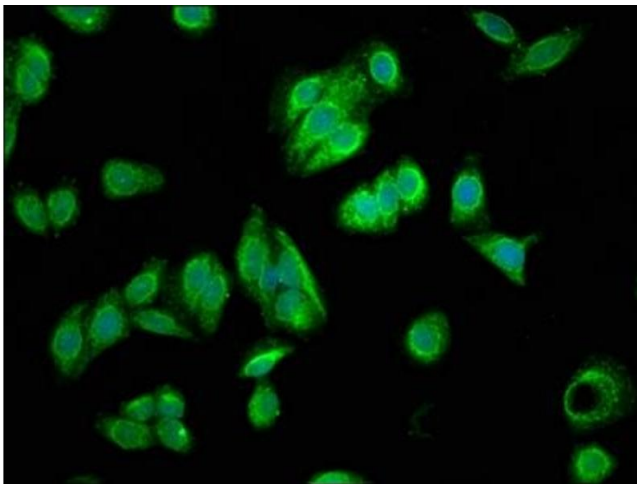
Immunohistochemistry

Image 1. Immunohistochemistry of paraffin-embedded human adrenal gland tissue using ABIN7152940 at dilution of 1:100



Immunohistochemistry

Image 2. Immunohistochemistry of paraffin-embedded human colon cancer using ABIN7152940 at dilution of 1:100



Immunofluorescence

Image 3. Immunofluorescence staining of HepG2 cells with ABIN7152940 at 1:166, counter-stained with DAPI. The cells were fixed in 4 % formaldehyde, permeabilized using 0.2 % Triton X-100 and blocked in 10 % normal Goat Serum. The cells were then incubated with the antibody overnight at 4 °C. The secondary antibody was Alexa Fluor 488-conjugated AffiniPure Goat Anti-Rabbit IgG(H+L).