

Datasheet for ABIN7152944

**anti-Filamin A antibody (AA 1234-1462)**[Go to Product page](#)

## 3 Images

## Overview

Quantity:	100 µg
Target:	Filamin A (FLNA)
Binding Specificity:	AA 1234-1462
Reactivity:	Human
Host:	Rabbit
Clonality:	Polyclonal
Conjugate:	This Filamin A antibody is un-conjugated
Application:	Immunohistochemistry (IHC), ELISA, Immunofluorescence (IF)

## Product Details

Immunogen:	Recombinant Human Filamin-A protein (1234-1462AA)
Isotype:	IgG
Cross-Reactivity:	Human
Purification:	>95%, Protein G purified

## Target Details

Target:	Filamin A (FLNA)
Alternative Name:	FLNA ( <a href="#">FLNA Products</a> )
Background:	Background: Promotes orthogonal branching of actin filaments and links actin filaments to membrane glycoproteins. Anchors various transmembrane proteins to the actin cytoskeleton

## Target Details

and serves as a scaffold for a wide range of cytoplasmic signaling proteins. Interaction with FLNA may allow neuroblast migration from the ventricular zone into the cortical plate. Tethers cell surface-localized furin, modulates its rate of internalization and directs its intracellular trafficking (By similarity). Involved in ciliogenesis. Plays a role in cell-cell contacts and adherens junctions during the development of blood vessels, heart and brain organs. Plays a role in platelets morphology through interaction with SYK that regulates ITAM- and ITAM-like-containing receptor signaling, resulting in by platelet cytoskeleton organization maintenance (By similarity).

Aliases: ABP 280 antibody, ABP-280 antibody, Actin-binding protein 280 antibody, Alpha filamin antibody, Alpha-filamin antibody, APBX antibody, CSBS antibody, CVD1 antibody, Endothelial actin binding protein antibody, Endothelial actin-binding protein antibody, Filamin 1 antibody, Filamin A alpha antibody, Filamin A antibody, Filamin-1 antibody, Filamin-A antibody, FLN antibody, FLN-A antibody, FLN1 antibody, FLNA antibody, FLNA\_HUMAN antibody, FMD antibody, MNS antibody, NHBP antibody, Non muscle filamin antibody, Non-muscle filamin antibody, OPD antibody, OPD1 antibody, OPD2 antibody, XLVD antibody, XMVD antibody

UniProt: [P21333](#)

Pathways: [TCR Signaling](#), [Maintenance of Protein Location](#)

## Application Details

Application Notes: Recommended dilution: IHC:1:20-1:200, IF:1:50-1:200,

Restrictions: For Research Use only

## Handling

Format: Liquid

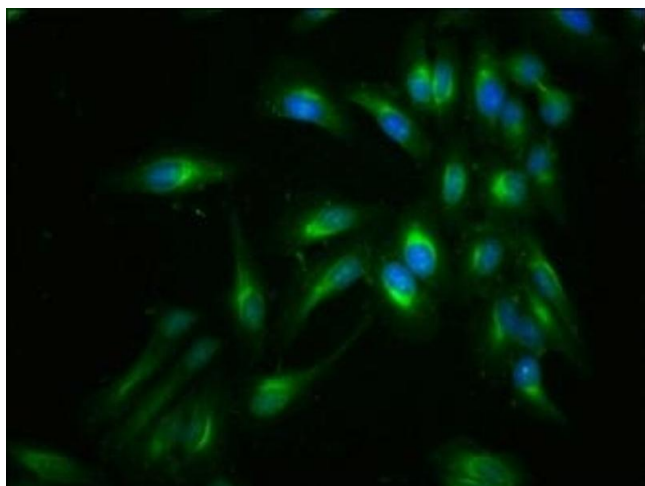
Buffer: Preservative: 0.03 % Proclin 300  
Constituents: 50 % Glycerol, 0.01M PBS, pH 7.4

Preservative: ProClin

Precaution of Use: This product contains ProClin: a POISONOUS AND HAZARDOUS SUBSTANCE which should be handled by trained staff only.

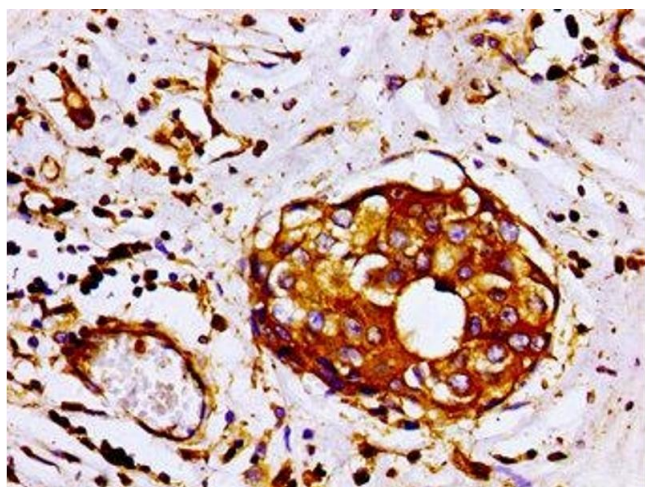
Storage: -20 °C,-80 °C

Storage Comment: Upon receipt, store at -20°C or -80°C. Avoid repeated freeze.



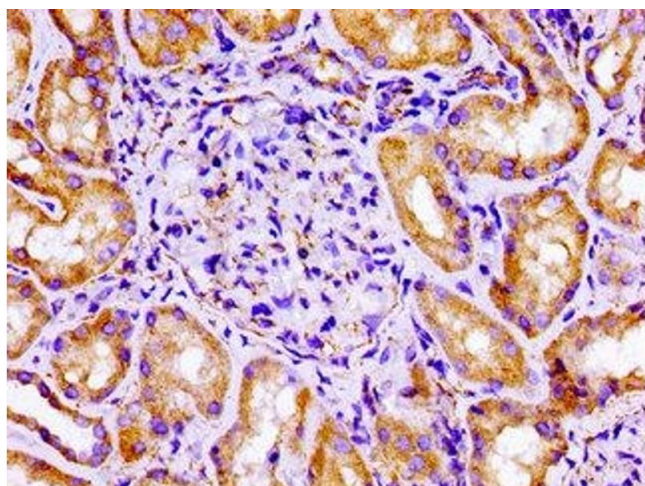
#### Immunofluorescence

**Image 1.** Immunofluorescent analysis of HeLa cells using ABIN7152944 at dilution of 1:100 and Alexa Fluor 488-conjugated AffiniPure Goat Anti-Rabbit IgG(H+L)



#### Immunohistochemistry

**Image 2.** Immunohistochemistry of paraffin-embedded human breast cancer using ABIN7152944 at dilution of 1:100



#### Immunohistochemistry

**Image 3.** Immunohistochemistry of paraffin-embedded human kidney tissue using ABIN7152944 at dilution of 1:100