



[Go to Product page](#)

Datasheet for ABIN7152948  
**anti-FILIP1 antibody (AA 957-1192)**

2 Images

### Overview

Quantity:	100 µg
Target:	FILIP1
Binding Specificity:	AA 957-1192
Reactivity:	Human
Host:	Rabbit
Clonality:	Polyclonal
Conjugate:	This FILIP1 antibody is un-conjugated
Application:	ELISA, Immunohistochemistry (IHC), Immunofluorescence (IF)

### Product Details

Immunogen:	Recombinant Human Filamin-A-interacting protein 1 protein (957-1192AA)
Isotype:	IgG
Cross-Reactivity:	Human
Purification:	>95%, Protein G purified

### Target Details

Target:	FILIP1
Alternative Name:	FILIP1 ( <a href="#">FILIP1 Products</a> )
Background:	Background: By acting through a filamin-A/F-actin axis, it controls the start of neocortical cell migration from the ventricular zone. May be able to induce the degradation of filamin-A.

## Target Details

Aliases: Filamin-A-interacting protein 1 antibody, FILIP antibody, FILIP1 antibody, FLIP1\_HUMAN antibody

UniProt: [Q7Z7B0](#)

## Application Details

Application Notes: Recommended dilution: IHC:1:20-1:200, IF:1:50-1:200,

Restrictions: For Research Use only

## Handling

Format: Liquid

Buffer: Preservative: 0.03 % Proclin 300  
Constituents: 50 % Glycerol, 0.01M PBS, PH 7.4

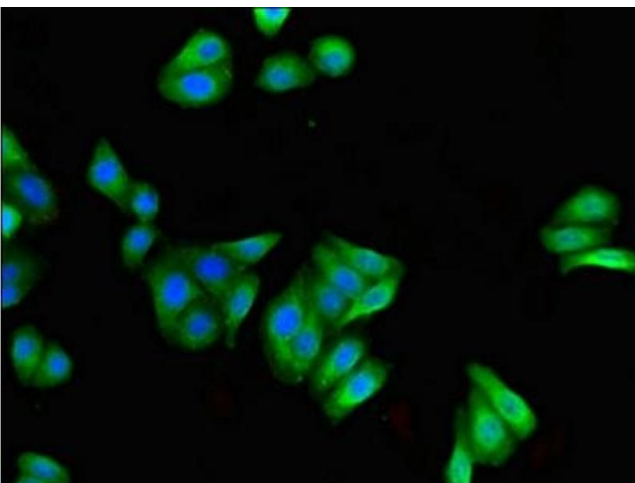
Preservative: ProClin

Precaution of Use: This product contains ProClin: a POISONOUS AND HAZARDOUS SUBSTANCE which should be handled by trained staff only.

Storage: -20 °C,-80 °C

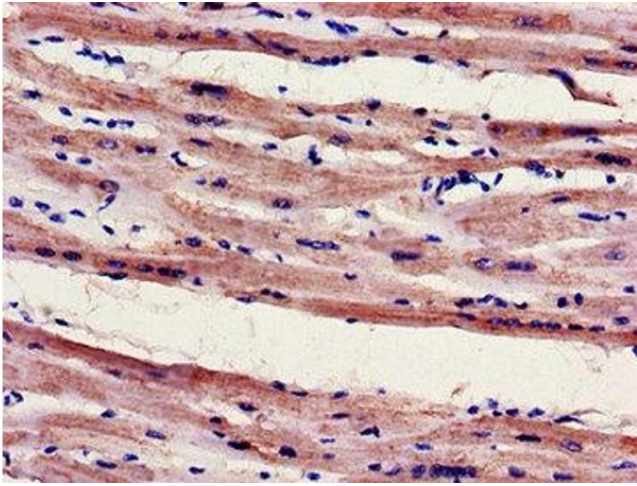
Storage Comment: Upon receipt, store at -20°C or -80°C. Avoid repeated freeze.

## Images



### Immunofluorescence

**Image 1.** Immunofluorescent analysis of HepG2 cells using ABIN7152948 at dilution of 1:100 and Alexa Fluor 488-conjugated AffiniPure Goat Anti-Rabbit IgG(H+L)



### Immunohistochemistry

**Image 2.** Immunohistochemistry of paraffin-embedded human heart tissue using ABIN7152948 at dilution of 1:100