

Datasheet for ABIN7152956  
**anti-FZR1 antibody (AA 1-493)**[Go to Product page](#)

## 2 Images

## Overview

Quantity:	100 µg
Target:	FZR1
Binding Specificity:	AA 1-493
Reactivity:	Human
Host:	Rabbit
Clonality:	Polyclonal
Conjugate:	This FZR1 antibody is un-conjugated
Application:	Western Blotting (WB), ELISA, Immunohistochemistry (IHC)

## Product Details

Immunogen:	Recombinant Human Fizzy-related protein homolog protein (1-493AA)
Isotype:	IgG
Cross-Reactivity:	Human
Purification:	>95%, Protein G purified

## Target Details

Target:	FZR1
Alternative Name:	FZR1 ( <a href="#">FZR1 Products</a> )
Background:	Background: Key regulator of ligase activity of the anaphase promoting complex/cyclosome (APC/C), which confers substrate specificity upon the complex. Associates with the APC/C in

## Target Details

late mitosis, in replacement of CDC20, and activates the APC/C during anaphase and telophase. The APC/C remains active in degrading substrates to ensure that positive regulators of the cell cycle do not accumulate prematurely. At the G1/S transition FZR1 is phosphorylated, leading to its dissociation from the APC/C. Following DNA damage, it is required for the G2 DNA damage checkpoint: its dephosphorylation and reassociation with the APC/C leads to the ubiquitination of PLK1, preventing entry into mitosis.

Aliases: CDC20 like 1b antibody, CDC20 like protein 1 antibody, CDC20-like protein 1 antibody, CDC20C antibody, CDH1 antibody, Cdh1/Hct1 homolog antibody, Fizzy related protein 1 antibody, Fizzy related protein antibody, Fizzy related protein homolog antibody, Fizzy-related protein homolog antibody, Fizzy/cell division cycle 20 related 1 antibody, FYR antibody, FZR 1 antibody, FZR 2 antibody, Fzr antibody, FZR\_HUMAN antibody, Fzr1 antibody, Fzr1 protein antibody, FZR2 antibody, HCDH 1 antibody, HCDH antibody, hCDH1 antibody, KIAA1242 antibody

UniProt: [Q9UM11](#)

Pathways: [DNA Replication](#), [Synthesis of DNA](#)

## Application Details

Application Notes: Recommended dilution: WB:1:500-1:2000, IHC:1:20-1:200,

Restrictions: For Research Use only

## Handling

Format: Liquid

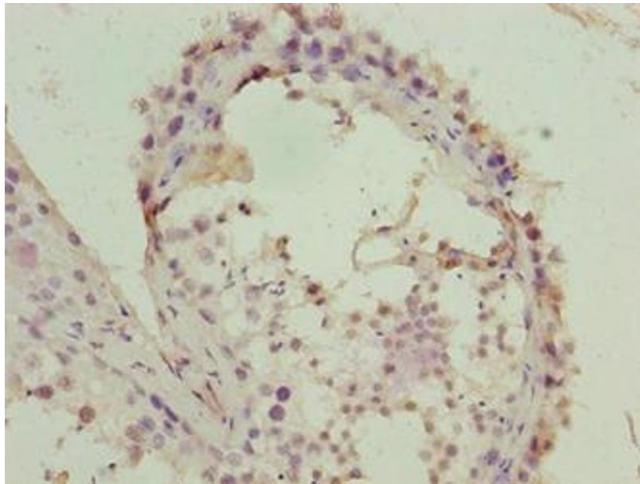
Buffer: Preservative: 0.03 % Proclin 300  
Constituents: 50 % Glycerol, 0.01M PBS, PH 7.4

Preservative: ProClin

Precaution of Use: This product contains ProClin: a POISONOUS AND HAZARDOUS SUBSTANCE which should be handled by trained staff only.

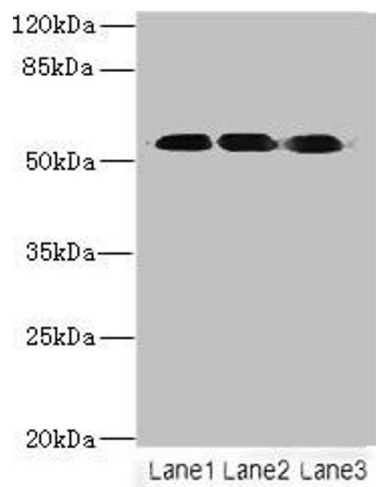
Storage: -20 °C,-80 °C

Storage Comment: Upon receipt, store at -20°C or -80°C. Avoid repeated freeze.



#### Immunohistochemistry

**Image 1.** Immunohistochemistry of paraffin-embedded human testis tissue using ABIN7152956 at dilution of 1:100



#### Western Blotting

**Image 2.** Western blot All lanes: FZR1 antibody at 6 µg/mL  
Lane 1: Hela whole cell lysate Lane 2: Jurkat whole cell lysate Lane 3: 293T whole cell lysate Secondary Goat polyclonal to rabbit IgG at 1/10000 dilution Predicted band size: 56, 55, 45 kDa Observed band size: 56 kDa