



[Go to Product page](#)

Datasheet for ABIN7152961
anti-BLVRB antibody (AA 2-206)

3 Images

Overview

Quantity:	100 µL
Target:	BLVRB
Binding Specificity:	AA 2-206
Reactivity:	Human
Host:	Rabbit
Clonality:	Polyclonal
Conjugate:	This BLVRB antibody is un-conjugated
Application:	Western Blotting (WB), ELISA, Immunohistochemistry (IHC), Immunofluorescence (IF)

Product Details

Immunogen:	Recombinant Human Flavin reductase (NADPH) protein (2-206AA)
Isotype:	IgG
Cross-Reactivity:	Human
Purification:	>95%, Protein G purified

Target Details

Target:	BLVRB
Alternative Name:	BLVRB (BLVRB Products)
Background:	Background: Broad specificity oxidoreductase that catalyzes the NADPH-dependent reduction of a variety of flavins, such as riboflavin, FAD or FMN, biliverdins, methemoglobin and PQQ

Target Details

(pyrroloquinoline quinone). Contributes to heme catabolism and metabolizes linear tetrapyrroles. Can also reduce the complexed Fe(3+) iron to Fe(2+) in the presence of FMN and NADPH. In the liver, converts biliverdin to bilirubin.

Aliases: Biliverdin IX beta reductase antibody, biliverdin reductase B (flavin reductase (NADPH)) antibody, Biliverdin reductase B antibody, Biliverdin-IX beta-reductase antibody, BLVRB antibody, BLVRB_HUMAN antibody, BVR B antibody, BVR-B antibody, BVRB antibody, epididymis secretory protein Li 10 antibody, Flavin reductase (NADPH) antibody, Flavin reductase antibody, FLR antibody, FR antibody, GHBP antibody, Green heme binding protein antibody, Green heme-binding protein antibody, HEL-S-10 antibody, Methemoglobin reductase antibody, MGC117413 antibody, NADPH dependent diaphorase antibody, NADPH flavin reductase antibody, NADPH-dependent diaphorase antibody, NADPH-flavin reductase antibody, SDR43U1 antibody, short chain dehydrogenase/reductase family 43U, member 1 antibody

UniProt: [P30043](#)

Application Details

Application Notes: Recommended dilution: WB:1:1000-1:5000, IHC:1:200-1:500, IF:1:50-1:200,

Restrictions: For Research Use only

Handling

Format: Liquid

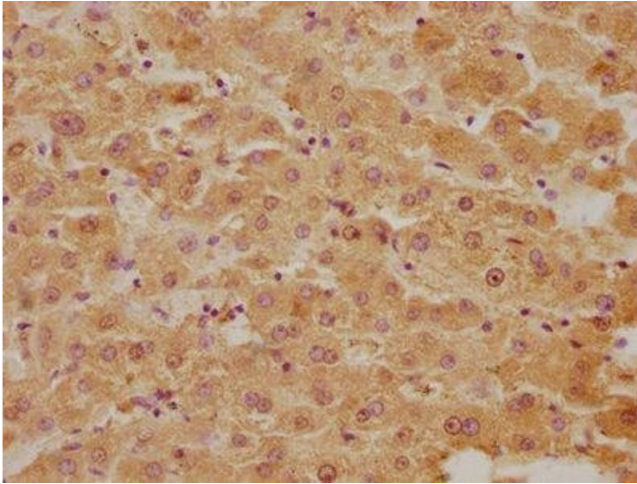
Buffer: Preservative: 0.03 % Proclin 300
Constituents: 50 % Glycerol, 0.01M PBS, pH 7.4

Preservative: ProClin

Precaution of Use: This product contains ProClin: a POISONOUS AND HAZARDOUS SUBSTANCE which should be handled by trained staff only.

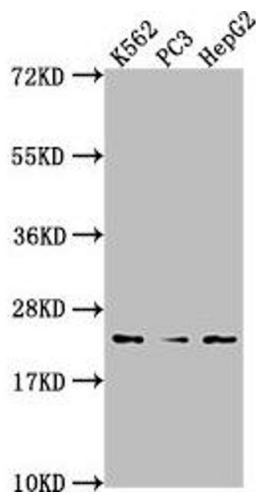
Storage: -20 °C,-80 °C

Storage Comment: Upon receipt, store at -20°C or -80°C. Avoid repeated freeze.



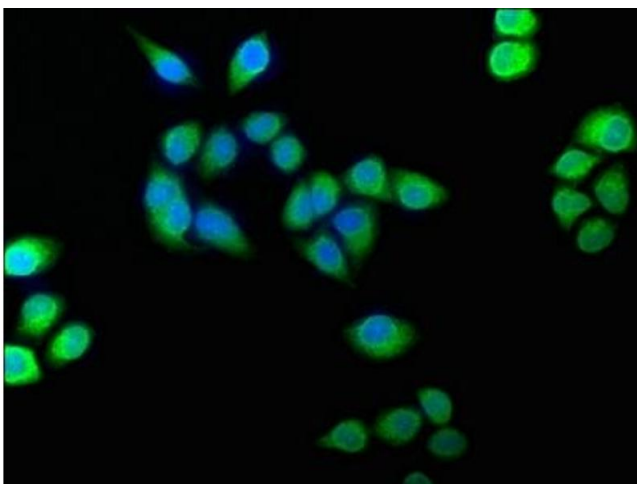
Immunohistochemistry

Image 1. IHC image of ABIN7152961 diluted at 1:300 and staining in paraffin-embedded human liver tissue performed on a Leica Bond™ system. After dewaxing and hydration, antigen retrieval was mediated by high pressure in a citrate buffer (pH 6.0). Section was blocked with 10 % normal goat serum 30 min at RT. Then primary antibody (1 % BSA) was incubated at 4 °C overnight. The primary is detected by a biotinylated secondary antibody and visualized using an HRP conjugated SP system.



Western Blotting

Image 2. Western Blot Positive WB detected in: K562 whole cell lysate, PC3 whole cell lysate, HepG2 whole cell lysate All lanes: BLVRB antibody at 1:2000 Secondary Goat polyclonal to rabbit IgG at 1/50000 dilution Predicted band size: 23 kDa Observed band size: 23 kDa



Immunofluorescence

Image 3. Immunofluorescence staining of HeLa cells with ABIN7152961 at 1:100, counter-stained with DAPI. The cells were fixed in 4 % formaldehyde, permeabilized using 0.2 % Triton X-100 and blocked in 10 % normal Goat Serum. The cells were then incubated with the antibody overnight at 4 °C. The secondary antibody was Alexa Fluor 488-conjugated AffiniPure Goat Anti-Rabbit IgG(H+L).